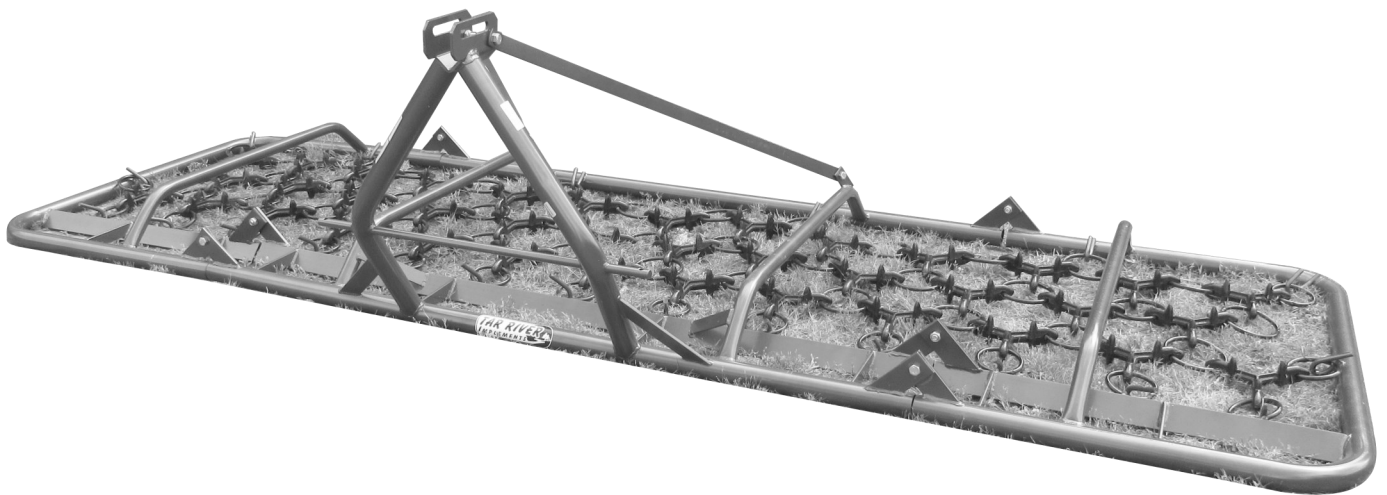




Pasture Harrow

WH06, WH7.5, WH13 Manual

WH20 Hydraulic



Operator's Manual



TO THE DEALER:

Assembly and proper installation of this product is the responsibility of the Tar River dealer. Read manual instructions and safety rules. Make sure all items on the Dealer’s Pre-Delivery and Delivery Check Lists in the Owner’s/Operator’s Manual are completed before releasing equipment to the owner.

TO THE OWNER:

Read this manual before operating your Tar River equipment. The information presented will prepare you to do a better and safer job. Keep this manual handy for ready reference. Require all operators to read this manual carefully and become acquainted with all the adjustment and operating procedures before attempting to operate. Replacement manuals can be obtained from your selling dealer. The equipment you have purchased has been carefully engineered and manufactured to provide dependable and satisfactory use. Like all mechanical products, it will require cleaning and upkeep. Lubricate the machine as specified. Observe all safety information in this manual and safety decals on the equipment. For service, your authorized Tar River dealer has trained mechanics, genuine Tar River service parts, and the necessary tools and equipment to handle all your needs. Use only genuine Tar River service parts. Substitute parts will void the warranty and may not meet standards required for safe and satisfactory operation.

Record your machine model and serial number in the space provide below. Your dealer will need this information to give you prompt, efficient service.

Model Number: _____

Serial Number: _____

Date Purchased: _____

TO THE DEALER: Part 1 of 2

Assembly and proper installation of this product is the responsibility of the Belco Resources Dealer. Read manual instructions and safety rules. Make sure all items on the Dealer's Pre-Delivery List and Owners Check List in the Owner's/Operator's Manual are completed before releasing equipment to the owner.



NOTE: The machine must be inspected thoroughly by the dealer prior to delivery of machine to owner. Place a check mark in the box beside each item checked. Contact Belco Recourses Equipment of any damages, issues or shortages to the machine.

Pre-Delivery Checklist - Dealer

- Gearbox oil level
- Check all fluids, hydraulic, gear oil, etc.
- Grease fittings properly lubricated
- Guards, shields, attachments securely fastened
- All hardware tightened
- Condition and tension of V-belts (if applicable)
- Blades properly installed, blade hardware tightened to proper torque specifications
- PTO attached to the machine (if applicable)
- All decals are clean, legible and in proper location
- Operator's Manual on machine

Model #: _____ Serial #: _____

Inspected by (Initials): _____ Date: _____



TO THE DEALER: Part 2 of 2

Dealer is to review the following items to the owner. Place a check mark in the box beside each item reviewed.

Checklist - Owner

- Correct attachment of machine to tractor
- Safe operation of the machine
- Importance of regular lubrication, maintenance and inspection
- Troubleshooting
- Replacing broken or worn parts (importance of using only OEM parts)
- Servicing the machine
- Storage
- Warranty
- Encourage owner to read and understand the Operator’s Manual before operating the machine
- Encourage owner to fill out the “Warranty Registration”, online warranty@br-equipment.com

| | |
|---------------------------------|-----------------------------|
| Purchase Date: _____ | Delivery Date: _____ |
| Model #: _____ | Serial #: _____ |
| Dealer Signature _____ | Date: _____ |
| Customer Signature _____ | Date: _____ |

TO THE OWNER:

Read this manual before operating your Belco Resources equipment. The information presented will prepare you to do a better and safer job. Keep this manual handy for ready reference. Require all operators to read this manual carefully and become acquainted with all the adjustment and operating procedures before attempting to operate. Replacement manuals can be obtained from your selling dealer. The equipment you have purchased has been carefully engineered and manufactured to provide dependable and satisfactory use. Like all mechanical products, it will require cleaning and upkeep. Lubricate the machine as specified. Observe all safety information in this manual and safety decals on the equipment. For service, your authorized Belco Resources dealer has trained mechanics, genuine Belco Resources service parts, and the necessary tools and equipment to handle all your needs. Use only genuine Belco Resources service parts. Substitute parts will void the warranty and may not meet standards required for safe and satisfactory operation.

Table of Contents

| | |
|--|-------|
| Introduction | 6 |
| Technical Specifications | 6 |
| Safety | 7 |
| Safety Signal Words | 7 |
| General Safety Guidelines | 8 |
| Safety Decal Care | 8 |
| Before Operation | 9 |
| During Operation | 10 |
| Highway And Transport Operations | 11-12 |
| Cast Iron Ring Replacement Instructions..... | 13 |
| Torque Specifications | 14 |
| Parts Breakdown | 15-21 |
| Warranty | 22 |

Introduction

Thank you for purchasing your Pasture Harrow. Take care of you pasture fields and horse arenas with the Tar River WH06, WH7.5 and WH13 (manual fold) or the WH20 (hydraulic fold) Cast Iron Pasture Harrow. Cat 1 -3 point hitch compact design make it easy to hook up and store. The reversible cast iron tines and the heavy tubular design will give you years of use. The WH20 comes standard with single acting cylinders but an optional double-acting cylinder kit is available for purchase.

Technical Specifications

- Heavy Duty pipe frame
- Cat 1 3 Point w/Cat. 2 bushings (on some models)
- Cat 1 QH adaptable
- Reversible
- Cast Iron Star tines
- Distributes and pulverizes manure, seed bed prep, renovate pastures, horse arenas, ballfields, levels mole hills, etc.

| MODEL | WH06 | WH7.5 | WH13 | WH20 |
|-----------------|-----------|-----------|-----------|-----------|
| Weight | 275 lbs. | 296 lbs. | 507 lbs. | 811 lbs. |
| Working width | 6' | 7.5' | 13' | 20' |
| Tines | Cast Iron | Cast Iron | Cast Iron | Cast Iron |
| Transport width | 4'3" | 4'7" | 7'3" | 7'3" |
| Fold | Manual | Manual | Manual | Hydraulic |

Important Safety Information

Safety

It is important that you read the entire manual and to become familiar with this product before you begin using it. This product is designed for certain applications only. The manufacturer cannot be responsible for issues arising from modification. We strongly recommend this product not be modified and /or used for any application other than that for which it is designed. If you have any questions relative to a particular application, DO NOT use the product until you have first contacted us to determine if it can or should be performed on the product.

Read and understand this manual and all safety signs before operating and maintaining. Review the safety instructions and precautions annually.

Safety Signal Words

TAKE NOTE! This safety alert symbol found though out this manual is used to call you attention to instructions involving you personal safety and the safety of others. Failure to follow these instructions can result in injury or death.



**This symbol means:
Attention!
Become alert!
Your safety is involved!**

Note the use of the signal words, DANGER, WARNING and CAUTION with the safety messages. The appropriate signal word for each has been selected using the following guidelines:



DANGER: Indicates an imminently hazardous situation that, if not avoided, will result in death or serious injury. This signal word is to be limited to the most extreme situations typically for machine components which, for functional purposes, cannot be guarded.



WARNING: Indicates a potentially hazardous situation that, if not avoided, could result in death or serious injury, and includes hazards that are exposed when guards are removed. It may also be used to alert against unsafe practices.



CAUTION: Indicates a potentially hazardous situation that, if not avoided, may result in minor or moderate injury. It may also be used to alert against unsafe practices.

Important Safety Information

General Safety Guidelines

Safety of the operator is one of the main concerns in designing and developing a new piece of equipment. Designers and manufacturers build in as many safety features as possible. However, every year many accidents occur which could have been avoided by a few seconds of thought and a more careful approach to handling equipment. You, the operator, can avoid many accidents by observing the following precautions in this section. To avoid personal injury, study the following precautions and insist those working with you, or for you, follow them.

Replace any **DANGER, WARNING, CAUTION** or instruction safety decal that is not readable or is missing. Location of such decals are indicated in this manual. Do not attempt to operate this equipment under the influence of drugs or alcohol.

Review the safety instructions with all users annually.

This equipment is dangerous to children and persons unfamiliar with its operation. The operator should be a responsible adult familiar with farm machinery and trained in this equipment's operations. **Do not allow persons to operate or assemble this machine until they have read this manual and have developed a thorough understanding of the safety precautions and of how it works.**

To prevent injury of death, use a tractor equipped with a Roll Over Protection System (ROPS). Do not paint over, remove or deface any signs or warning decals on your equipment. Observe all safety signs and practice the instructions on them.

Never exceed the limits of a piece of machinery. If its ability to do a job, or to do so safely, is in question - **Don't try it!**



Safety Decal Care

- Keep safety signs clean and legible at all times.
- Replace safety signs that are missing or have become illegible.
- Replaced parts that displayed a safety sign should also display the current safety sign
- Safety signs are available from your Distributor or Dealer Parts Department or the factory.

Important Safety Information

How to Install Safety Signs

- Be sure that the installation area is clean and dry.
- Decide on the exact position before you remove the backing paper.
- Remove the smallest portion of the split backing paper.
- Align the decal over the specified area and carefully press the small portion with the exposed sticky backing in place.
- Slowly peel back the remaining paper and carefully smooth the remaining portion of the decal in place.
- Small air pockets can be pierced with a straight pin and smoothed out using the piece of decal backing paper.



Before Operation

- Carefully study and understand this manual.
- Do not wear loose-fitting clothing, which may catch in moving parts.
- Always wear protective clothing and substantial shoes.
- Assure that all tires are inflated evenly.
- Give the machine a visual inspection for any loose bolts, worn parts or cracked welds, and make necessary repairs. Follow the maintenance safety instructions included with this manual.
- Be sure that there are no tools lying on or in the equipment.
- Do not use the machine until you are sure that the area is clear, especially of children and animals.
- Don't hurry the learning process or take the machine for granted. Ease into it and become familiar with your new equipment.
- Practice operation of your equipment and its attachments. Completely familiarize yourself and other operators with its operation before using.
- Use a tractor equipped with a Roll Over Protection System (ROPS) and fasten your seat belt prior to starting engine.
- The manufacturer does not recommend usage of tractor with ROPS removed.
- Move tractor wheels to the widest recommended settings to increase stability.
- Securely attach to towing unit. Use a high strength, appropriately sized hitch pin with a mechanical retainer and attach safety chain.
- Do not allow anyone to stand between the tongue or hitch and the towing vehicle when backing up to the equipment.

Important Safety Information



During Operation

- Children should not be allowed on the product.
- Clear the area of small children and bystanders before moving the machine.
- If using a towing unit, securely attach machine by using a hardened 3/4" pin, a metal retainer, and safety chains if required. Shift towing unit to a lower gear before going down steep downgrades, thus using the engine as a retarding force. Keep towing vehicle in gear at all times. Slow down for corners and rough terrain.
- Make sure you are in compliance with all local and state regulations regarding transporting equipment on public roads and highways. Lights and slow moving signs must be clean and visible by overtaking or oncoming traffic when machine is transported.
- Beware of bystanders, **particularly children!** Always look around to make sure that it is safe to start the engine of the towing vehicle or move the machine. This is particularly important with higher noise levels and quiet cabs, as you may not hear people shouting.
- **NO PASSENGERS ALLOWED!** Do not carry passengers anywhere on, or in, the tractor or equipment, except as required for operation.
- Keep hands and clothing clear of moving parts.
- Do not clean, lubricate or adjust your equipment while it is moving.
- When halting operation, even periodically, set the tractor or towing vehicle brakes, disengage the PTO, shut off the engine and **remove the ignition key.**
- Be especially observant of the operating area and terrain. Watch for holes, rocks or hidden hazards. Always inspect the area prior to operation.
- **DO NOT** operate near the edge of drop-offs or banks.
- **DO NOT** operate on steep slopes as overturns may result.
- Operate up and down (not across) intermediate slopes. Avoid sudden starts and stops.



Warning: Never backup with the machine on the ground! This will cause damage to the machine. Always lift the machine high enough to clear the ground before backing up.

Important Safety Information



Highway and Transport Operations

- Adopt safe driving practices.
- Keep the brake pedals latched together at all times. **Never use independent braking with machine in tow as loss of control and/or upset of machine can result.**
- Always drive at a safe speed relative to local conditions and ensure that your speed is low enough for an emergency stop to be safe and secure. Keep speed at a minimum.
- Reduce speed prior to turns to avoid the risk of overturning.
- Avoid sudden uphill turns on steep slopes.
- Always keep the tractor or towing vehicle in gear to provide engine braking when going downhill. Do not coast.
- Do not drink and drive!
- Comply with state and local laws governing highway safety and movement of farm machinery on public roads.
- Use approved accessory lighting flags and necessary warning devices to protect operators of other vehicles on the highway during daylight and nighttime transport. Various safety lights and devices are available from your dealer.
- The use of flashing amber lights is acceptable in most localities. However, some localities prohibit their use. Local laws should be checked for all highway and marking requirements.
- When driving the tractor and equipment on the road or highway under 40 kph (20 mph) at night or during the day, use the amber warning lights and a slow moving vehicle (SMV) identification emblem.
- Plan your route to avoid heavy traffic.
- Be a safe and courteous driver. Always yield to oncoming traffic in all situations, including narrow bridges, intersections, etc.
- Be observant of bridge loading ratings. Do not cross bridges rated at lower than the gross weight at which you are operating.
- Watch for obstructions overhead and to the side while transporting.
- Always operate in a position to provide maximum visibility at all times. Make allowances for increased length and weight of the equipment when making turns, stopping the machine, etc.
- Pick the most level route when transporting across fields. Avoid the edges of ditches or gullies and steep hillsides.
- Be extra careful when working in inclines.

Important Safety Information



Highway and Transport Operations

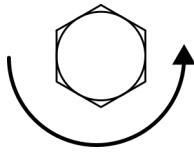
- Maneuver the tractor or towing vehicle at safe speeds.
- Avoid overhead wires or other obstacles. Contact with overhead lines could cause serious injury or death.
- Avoid loose fill, rocks and holes, they can be dangerous for equipment operation or movement.
- Allow for machine length when making turns,
- Operate the towing vehicle from the operator's seat only.
- Never stand alongside of machine with engine running or attempt to start engine and/or operate machine while standing alongside of machine.
- Never leave running equipment attachments unattended.
- As a precaution, always recheck the hardware on equipment following every 100 hours of operation. Correct all problems. Follow the maintenance safety procedures.

Cast Iron Ring Replacement Instructions

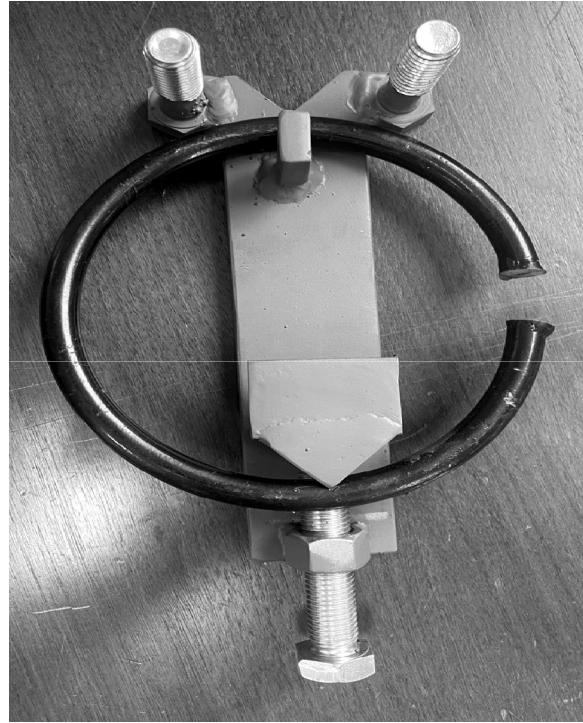
NOTE: This tool is for removing and replacing the cast iron rings on the WH Series Pasture Harrow.
Order Part Number: WH10035 Cast Iron Ring Replacement Tool.

To open the ring:

Position the ring in the jig as shown and turn the bolt counter-clockwise.

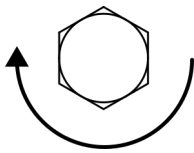


Counter-clockwise.

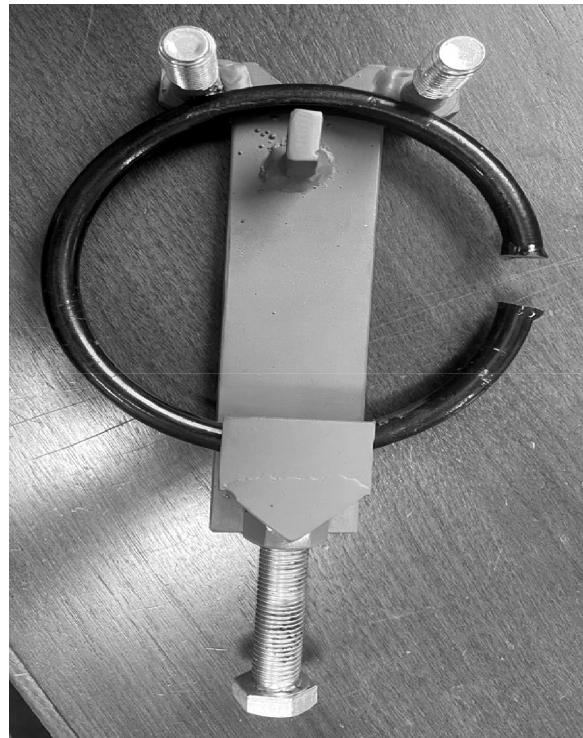


To close the ring:

Position the ring in the jig as shown and turn the bolt clockwise.



Clockwise.



Torque Specifications

| Torque Specifications for Common Bolt Sizes | | | | | | | | | | | | | | | |
|---|--------------|--------------------------|-------|---------|-------|---------|-------|-----------|-------|--------------------------|-------|------------|-------|------|------|
| Inches | | Bolt Head Identification | | | | | | Metric | | Bolt Head Identification | | | | | |
| | | | | | | | | | | 5.8 | | 8.8 | | 10.9 | |
| Bolt size (inches) | Thread pitch | Grade 2 | | Grade 5 | | Grade 8 | | Class 5.8 | | Class 8.8 | | Class 10.9 | | | |
| | | N.m | ft-lb | N.m | ft-lb | N.m | ft-lb | N.m | ft-lb | N.m | ft-lb | N.m | ft-lb | | |
| 1/4" | 20 | 7 | 5 | 11 | 8 | 16 | 12 | M5 | 0.08 | 4 | 3 | 6 | 4 | 9 | 7 |
| 1/4" | 28 | 8 | 6 | 13 | 10 | 19 | 14 | M6 | 1 | 6 | 4 | 10 | 7 | 15 | 11 |
| 5/16" | 18 | 15 | 11 | 24 | 17 | 33 | 25 | M8 | 1.25 | 16 | 12 | 25 | 18 | 36 | 27 |
| 5/16" | 24 | 17 | 13 | 26 | 19 | 37 | 27 | M8 | 1 | 17 | 13 | 26 | 19 | 38 | 28 |
| 3/8" | 16 | 27 | 20 | 42 | 31 | 59 | 44 | M10 | 1.5 | 31 | 23 | 48 | 35 | 71 | 52 |
| 3/8" | 24 | 31 | 23 | 47 | 35 | 67 | 49 | M10 | 1.25 | 33 | 24 | 51 | 38 | 75 | 55 |
| 7/16" | 14 | 43 | 32 | 67 | 49 | 95 | 70 | M10 | 1 | 35 | 26 | 53 | 39 | 78 | 58 |
| 7/16" | 20 | 48 | 36 | 75 | 55 | 106 | 78 | M12 | 1.75 | 54 | 40 | 84 | 62 | 123 | 91 |
| 1/2" | 13 | 66 | 48 | 102 | 75 | 144 | 106 | M12 | 1.5 | 56 | 41 | 87 | 64 | 128 | 94 |
| 1/2" | 20 | 75 | 55 | 115 | 85 | 163 | 120 | M12 | 1.25 | 59 | 44 | 90 | 66 | 133 | 98 |
| 9/16" | 12 | 95 | 70 | 147 | 109 | 208 | 154 | M14 | 2 | 84 | 62 | 133 | 98 | 195 | 144 |
| 9/16" | 18 | 106 | 79 | 164 | 121 | 232 | 171 | M14 | 1.5 | 94 | 69 | 142 | 105 | 209 | 154 |
| 5/8" | 11 | 132 | 97 | 203 | 150 | 287 | 212 | M16 | 2 | 131 | 97 | 206 | 152 | 302 | 223 |
| 5/8" | 18 | 149 | 110 | 230 | 170 | 325 | 240 | M16 | 1.5 | 141 | 104 | 218 | 161 | 320 | 236 |
| 3/4" | 10 | 233 | 172 | 361 | 266 | 509 | 376 | M18 | 2.5 | 181 | 133 | 295 | 218 | 421 | 310 |
| 3/4" | 16 | 261 | 192 | 403 | 297 | 569 | 420 | M18 | 2 | 196 | 145 | 311 | 229 | 443 | 327 |
| 7/8" | 9 | 226 | 167 | 582 | 430 | 822 | 606 | M18 | 1.5 | 203 | 150 | 327 | 241 | 465 | 343 |
| 7/8" | 14 | 249 | 184 | 642 | 473 | 906 | 668 | M20 | 2.5 | 256 | 189 | 415 | 306 | 592 | 437 |
| 1" | 8 | 339 | 250 | 873 | 644 | 1232 | 909 | M20 | 1.5 | 288 | 212 | 454 | 335 | 646 | 476 |
| 1" | 12 | 371 | 273 | 955 | 704 | 1348 | 995 | M22 | 2.5 | 344 | 254 | 567 | 418 | 807 | 595 |
| 1-1/8" | 7 | 480 | 354 | 1077 | 794 | 1746 | 1288 | M22 | 1.5 | 381 | 281 | 613 | 452 | 873 | 644 |
| 1-1/8" | 12 | 539 | 397 | 1208 | 891 | 1958 | 1445 | M24 | 3 | 444 | 327 | 714 | 526 | 1017 | 750 |
| 1-1/4" | 7 | 677 | 500 | 1519 | 1120 | 2463 | 1817 | M24 | 2 | 488 | 360 | 769 | 567 | 1095 | 808 |
| 1-1/4" | 12 | 750 | 553 | 1682 | 1241 | 2728 | 2012 | M27 | 3 | 656 | 484 | 1050 | 774 | 1496 | 1103 |
| 1-3/8" | 6 | 888 | 655 | 1992 | 1469 | 3230 | 2382 | M27 | 2 | 719 | 530 | 1119 | 825 | 1594 | 1176 |
| 1-3/8" | 12 | 1011 | 746 | 2268 | 1673 | 3677 | 2712 | M30 | 3.5 | 906 | 668 | 1420 | 1047 | 2033 | 1499 |
| 1-1/2" | 6 | 1179 | 869 | 2643 | 1949 | 4286 | 3161 | M30 | 2 | 1000 | 738 | 1600 | 1180 | 2250 | 1659 |
| 1-1/2" | 12 | 1326 | 978 | 2974 | 2194 | 4823 | 3557 | M36 | 4 | 1534 | 1131 | 2482 | 1830 | 3535 | 2607 |

Notes:

This chart is an approximate estimate of torque values.

Always tighten hardware to these values unless a different torque value or tightening procedure is listed for a specific application.

Fasteners must always be replaced with the same grade as specified in the manual.

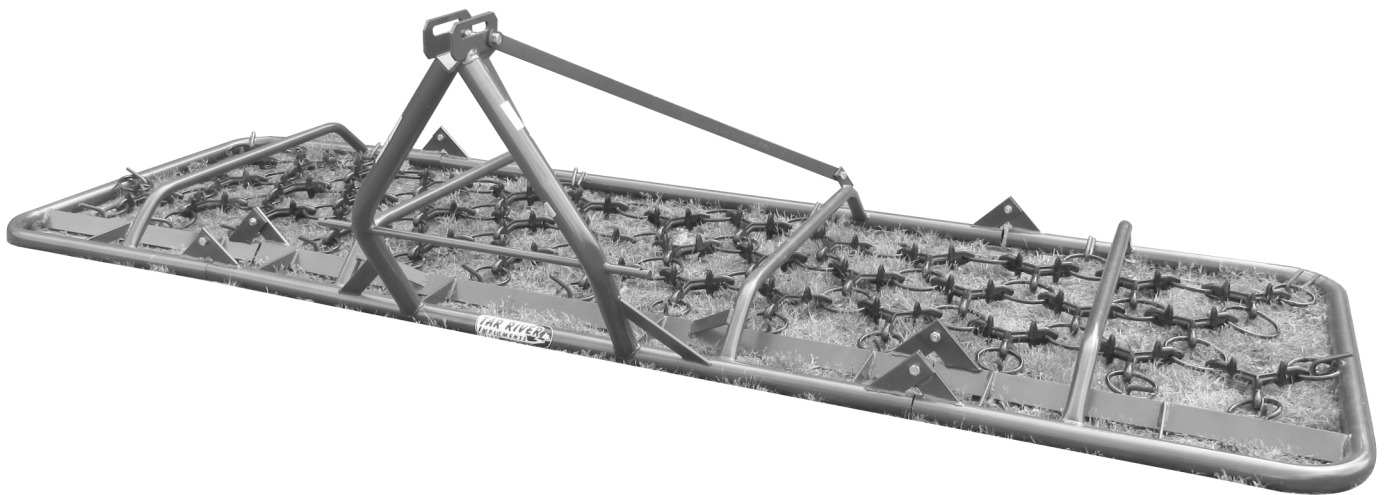
Always use the proper tool for tightening hardware: SAE for SAE hardware and Metric for Metric hardware.

Make sure that fastener threads are clean and that you properly start thread engagement.



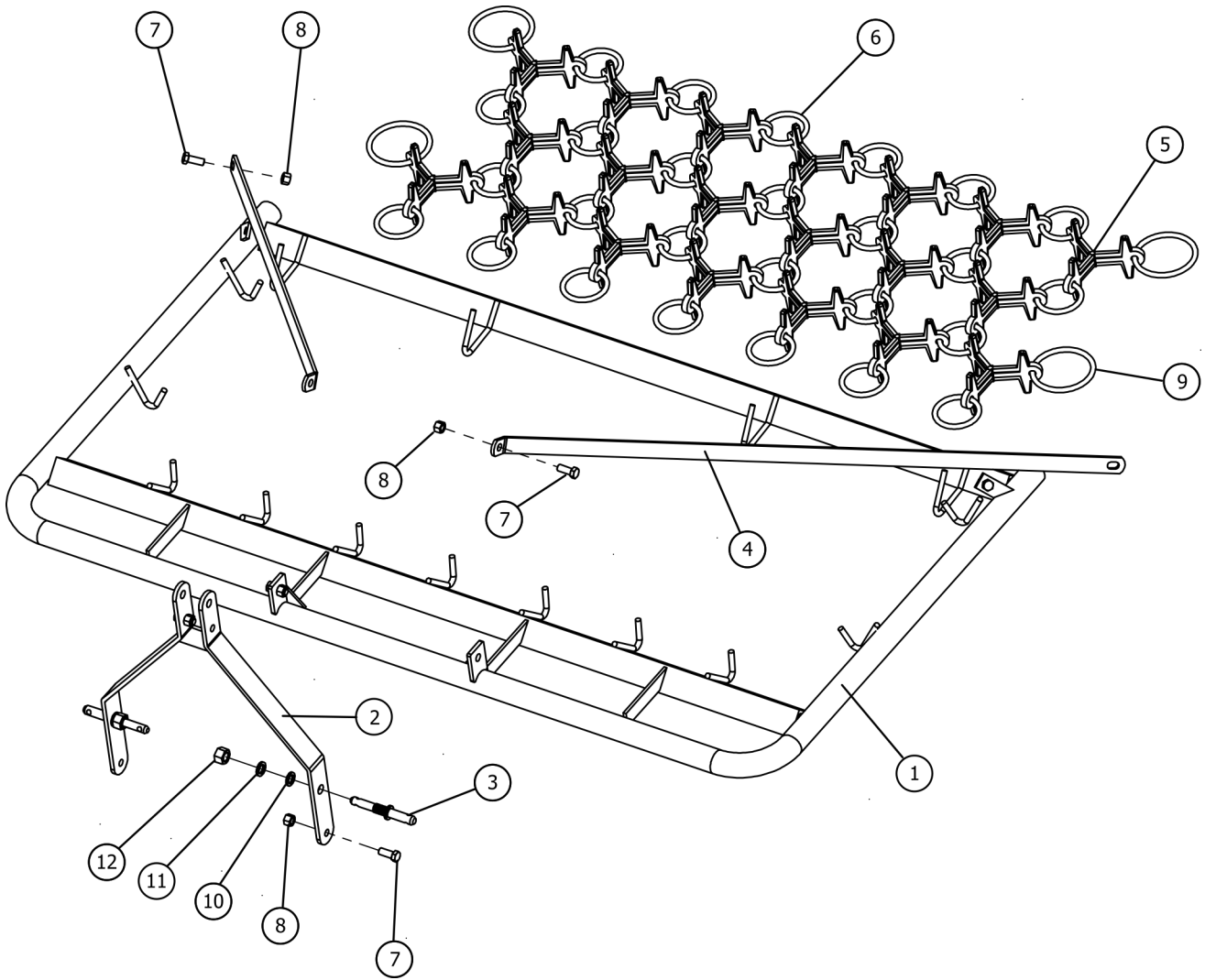
Pasture Harrow

**WH13 Manual,
Wh20 Hydraulic**



Parts Manual

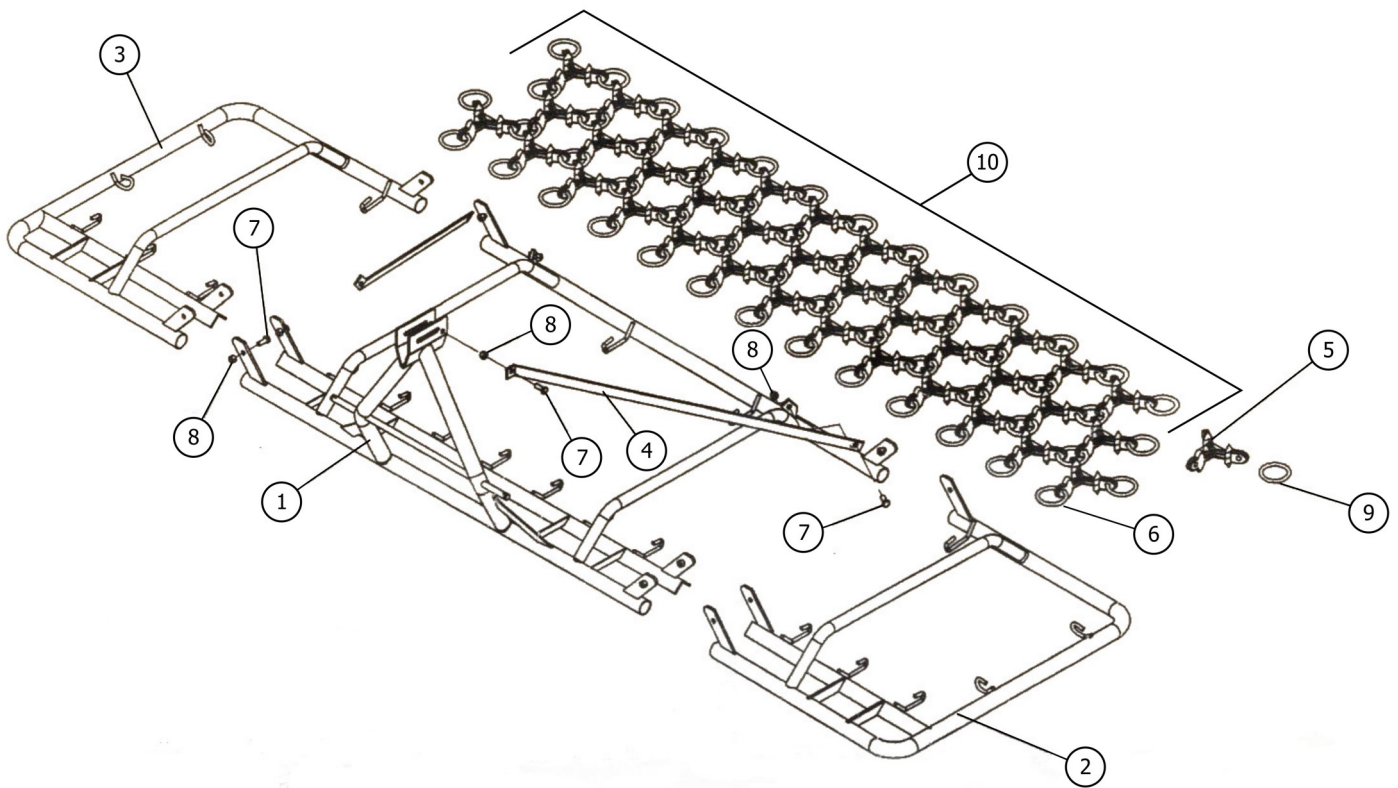
Frame WH06, WH7.5



Frame WH06, WH7.5

| Item | Part # | Description | Qty. |
|------|----------|--|-------|
| 1 | WH10038 | Main Frame WH06 | 1 |
| | WH10039 | Main Frame WH7.5 | 1 |
| 2 | WH10040 | Lift Arm WH06/WH7.5 | 1 |
| 3 | WH10041 | Lower Pin ID Ø22mm x OD Ø28mm | 2 |
| 4 | WH10042 | Rear Brace WH06 | 2 |
| | WH10043 | Rear brace WH7.5 | 2 |
| 5 | WH10006 | Tine | 17/20 |
| 6 | WH10007 | Small ring | 22/26 |
| 7 | BM162040 | Bolt HH M16-2.0x40 | 6 |
| 8 | LN1620 | Lock nut M16 | 6 |
| 9 | WH10015 | Big ring | 4 |
| 10 | FW24 | Washer flat M24 | 2 |
| 11 | LW24 | Washer lock M24 | 2 |
| 12 | NM2415 | Nut HH M24-1.5 | 2 |
| - | WH10035 | WH-cast iron ring replacement tool (not shown) See page 13 for instructions. | 1 |
| - | WH10037 | Replacement mat for WH06 | 1 |

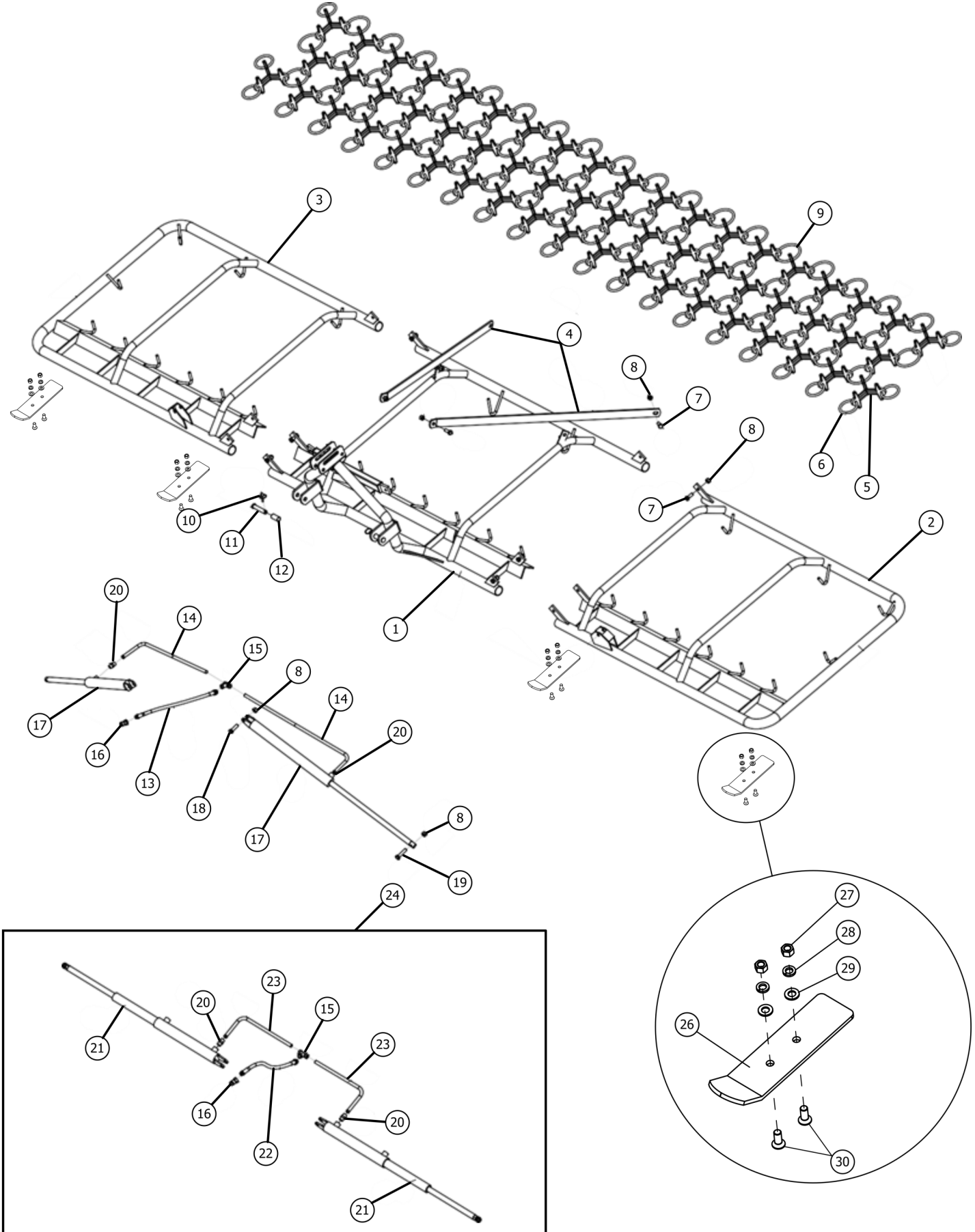
Frame WH13



Frame WH13

| Item | Part # | Description | Qty. |
|------|----------|--|------|
| 1 | WH10002 | Mid main frame WH13 | 1 |
| 2 | WH10003 | Left main frame WH13 | 1 |
| 3 | WH10004 | Right main frame WH13 | 1 |
| 4 | WH10005 | Lift arm brace WH13 | 2 |
| 5 | WH10006 | Tine | 38 |
| 6 | WH10007 | Small ring | 17 |
| 7 | BM162040 | Bolt HH M16-2.0x40 | 10 |
| 8 | LMN1620 | Nut self locking M16-2.0 | 10 |
| 9 | WH10015 | Large ring | 37 |
| 10 | WH10036 | Replacement mat for WH13 | 1 |
| - | WH10035 | WH-cast iron ring replacement tool (not shown) See page 13 for instructions. | 1 |

Frame WH20



Frame WH20

| Item | Belco Part Number | Description | Qty. |
|------|-------------------|--|------|
| 1 | WH10011 | Mid main frame WH20 | 1 |
| 2 | WH10012 | Left main frame WH20 | 1 |
| 3 | WH10013 | Right main frame WH20 | 1 |
| 4 | WH10014 | Lift arm brace WH20 | 2 |
| 5 | WH10006 | Tine | 56 |
| 6 | WH10007 | Small ring | 23 |
| 7 | BM162040 | Bolt HH M16-2.0x40 | 10 |
| 8 | LMN1620 | Nut self locking M16-2.0 | 10 |
| 9 | WH10015 | Large ring | 55 |
| 10 | LYPN08 | Lynch pin 8mm | 2 |
| 11 | LB0010 | Lower hitch pin 22mm | 2 |
| 12 | WH10016 | Bushing 28 x 23 x 58 mm | 2 |
| 13 | WH10008 | Hose 1.3m - supply | 1 |
| 14 | WH10009 | Hose 1m - cylinder | 2 |
| 15 | WH10010 | Hose coupler WH20 | 1 |
| 16 | WH10023 | Hose end quick coupler WH20 | 1 |
| 17 | WH10001 | Hydraulic cylinder, single acting WH20 | 2 |
| | WH10031 | Seal kit - cylinder WH10001, <i>Serial #5126-5130 & above (See NOTE 1)</i> | 1 |
| | WH10033 | Seal kit - cylinder WH10001, <i>Serial #5101-5120 & below (See NOTE 1)</i> | 1 |
| 18 | BM162040 | Bolt HH M16-2.0x45 | 2 |
| 19 | BM162070 | Bolt HH M16-2.0x70 | 2 |
| 20 | WH10026 | Male connector WH20 | 2 |
| 21 | WH10027 | Hydraulic cylinder, double acting - WH20 | 2 |
| | WH10032 | Seal kit - double acting cylinder for WH10027 | 1 |
| 22 | WH10028 | Hydraulic hose - 1.4m | 1 |
| 23 | WH10029 | Hydraulic hose - 0.5m | 2 |
| 24 | WH10030 | Hose kit - double acting cylinder. (See NOTE 2) | 1 |
| 25 | WH10034 | Adaptor seal (O-ring 5/8"/15.875mm) *not shown | - |
| 26 | WH10044 | Skid plate - WH20 | 4 |
| 27 | NM1620 | Nut HH M16-2.0 | 8 |
| 28 | LW16 | Washer lock M16 | 8 |
| 29 | FW16 | Washer flat M16 | 8 |
| 30 | FCBM162040 | Flat head carriage bolt M16-2.0x40 | 8 |
| - | WH10035 | WH-cast iron ring replacement tool (not shown) See page 13 for instructions. | 1 |

***Note 1: Before ordering the seal kit for WH10001 Single Acting Cylinder, please check your machines serial number.**

****Note 2: Hose Kit WH10030 includes the following items: #15 (1pc), #16 (1pc), #20 (2pcs), #22 (1pc), #23 (2pcs)**

Warranty

LIMITED WARRANTY

Belco Resources Equipment warrants to the original purchaser of any new piece of machinery from Belco Resources Equipment, purchased from an authorized Belco Resources Equipment dealer, that the equipment be free from defects in material and workmanship for a period of one (1) year for non-commercial, state, and municipalities' use, ninety (90) days for commercial use from date of retail sale. Warranty for rental purposes is thirty (30) days. The obligation of Belco Resources Equipment to the purchaser under this warranty is limited to the repair or replacement of defective parts.

Replacement or repair parts installed in the equipment covered by this limited warranty are warranted for ninety (90) days from the date of purchase of such part or to the expiration of the applicable new equipment warranty period, whichever occurs later. Warranted parts shall be provided at no cost to the user at an authorized Belco Resources Equipment dealer during regular working hours. Belco Resources Equipment reserves the right to inspect any equipment or parts, which are claimed to have been defective in material or workmanship.

This limited warranty does not apply to and excludes wear items such as shear pins, tires, tubes knives, blades or other wear items. Oil or grease is not covered by this warranty.

All obligations of Belco Resources Equipment under this limited warranty shall be terminated if:

- Proper service is not performed on the machine.

- The machine is modified or altered in any way.

- The machine is being used or has been used for purposes other than those for which the machine was intended.

DISCLAIMER OF IMPLIED WARRANTIES & CONSEQUENTIAL DAMAGES

Belco Resources Equipment obligation under this limited warranty, to the extent allowed by law, is in lieu of all warranties, implied or expressed, including implied warranties of merchantability and fitness for a particular purpose and any liability for incidental and consequential damages with respect to the sale or use of the items warranted. Such incidental and consequential damages shall include but not be limited to: transportation charges other than normal freight charges; cost of installation other than cost approved by Belco Resources Equipment; duty; taxes; charges for normal service or adjustment; loss of crops or any other loss of income; rental of substitute equipment, expenses due to loss, damage, detention or delay in the delivery.

REGISTRATION

The online Warranty Registration must be completed in order to qualify for coverage on this Limited Warranty. Visit br-equipment.com, click on "Warranty Registration" and completely fill out the form to register the new piece of equipment.

Page left blank intentionally



401 Jeffreys Road
Rocky Mount, NC 27804
www.tarrivermfg.com

Tel: 252-822-7140
Fax: 252-787-5855
Sales@tarrivermfg.com