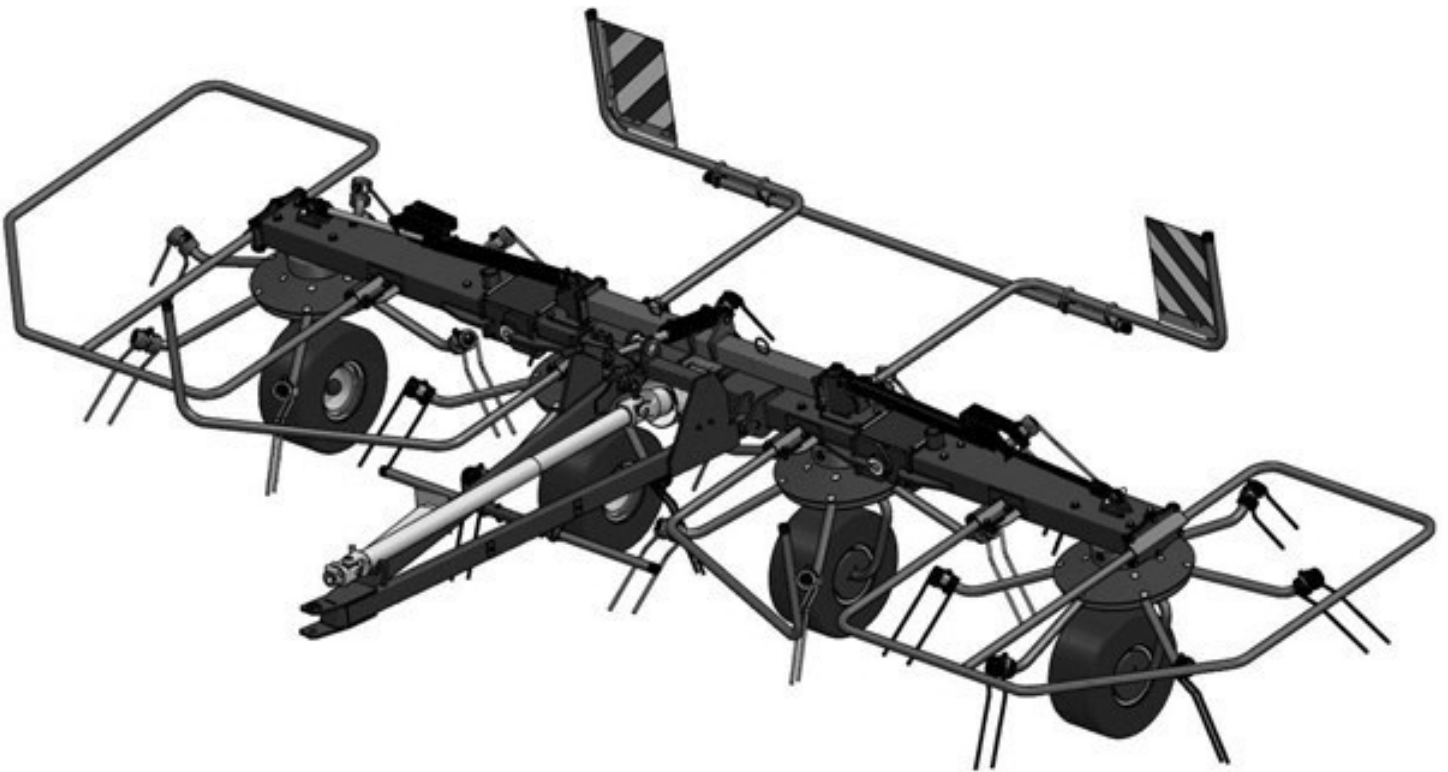




# 4 Rotor Tiller PRZ-5500



## Operator's Manual

**Page left blank intentionally**

BELCO Resources Equipment guarantees the efficient operation of the machine, providing it is being used in accordance with the technical and operating conditions specified in this USER MANUAL.

Any faults revealed during the warranty period will be repaired by the Warranty Service. Expiration date of the warranty period is specified in the WARRANTY CARD.

Machine parts and components, which are subject to wear in normal operating conditions, are not covered by the warranty, regardless of the warranty period.

Warranty Service covers only instances such as: mechanical damages not caused by a fault of the user, production defects, etc.

The group of elements includes, among others, the following parts/components:

- rotor spring tines.

In the event of damages resulting from:

- mechanical destruction caused by a fault of the user or a traffic accident,
- improper use, adjustment, and maintenance, use of the machine for a purpose other than intended,
- use of a machine, that was damaged,
- repairs conducted by unauthorized persons, improper repairs,
- arbitrary changes and modifications of a machine structure, the user's rights to Warranty Service may become invalid.

The user is obliged to immediately report any noticed damages of paint coat or spots of corrosion, and order repairs regardless of whether the damages are covered by the Warranty. Warranty conditions are specified in detail in the WARRANTY CARD attached to the purchased machine.



**ATTENTION!**

You must demand from the dealer to properly fill out the Warranty Card. For example, if the date of sale or the stamp of a dealer are missing, you risk that your complaints will not be considered valid.

**TO THE DEALER:**

Assembly and proper installation of this product is the responsibility of the Tar River dealer. Read manual instructions and safety rules. Make sure all items on the Dealer's Pre-Delivery and Delivery Check Lists in the Owner's/Operator's Manual are completed before releasing equipment to the owner.

**TO THE OWNER:**

Read this manual before operating your Tar River equipment. The information presented will prepare you to do a better and safer job. Keep this manual handy for ready reference. Require all operators to read this manual carefully and become acquainted with all the adjustment and operating procedures before attempting to operate. Replacement manuals can be obtained from your selling dealer. The equipment you have purchased has been carefully engineered and manufactured to provide dependable and satisfactory use. Like all mechanical products, it will require cleaning and upkeep. Lubricate the unit as specified. Observe all safety information in this manual and safety decals on the equipment. For service, your authorized Tar River dealer has trained mechanics, genuine Tar River service parts, and the necessary tools and equipment to handle all your needs. Use only genuine Tar River service parts. Substitute parts will void the warranty and may not meet standards required for safe and satisfactory operation.

Record your implement model and serial number in the space provide below. Your dealer will need this information to give you prompt, efficient service.

**Model Number:** \_\_\_\_\_

**Serial Number:** \_\_\_\_\_

**Date Purchased:** \_\_\_\_\_

## Table of Contents

---

Introduction .....	5
Technical Specifications .....	5
Safety .....	6
Safety Signal Words .....	6
General Safety Guidelines .....	7
Safety Decal Care .....	7
Before Operation .....	8
During Operation .....	9
Highway And Transport Operations .....	10
Assembly .....	12-14
Operating Instructions.....	15-18
Before Beginning .....	15
Lubrication and Maintenance .....	19
Changing Discs .....	19
Seed Charts .....	20
Torque Specifications .....	21
Parts Breakdown .....	23-33
Decals .....	34-36
Warranty .....	37

## Introduction

Thank you for purchasing your 4 Rotor Tedder. The 4 Rotor Tedder built heavy in all the right places. This machine is designed to withstand the rigors of high volume hay production.

The PRZ-5500 is equipped with large 18” tires to give the tedder greater floatation across uneven terrain. Adjustable angling allows for boundary tedding. Thick walled tubular tine arms hold up long after the flat bar style ones would have bent. Hydraulic tilt and fold come standard.

## Technical Specifications

- 18’ working width
- Overrunning ratchet clutch PTO
- High floatation tires
- Heavy built, rectangular tube frame
- Wheel fenders on inside tires
- Road trans tire
- Hydraulic lift
- Hydraulic tilt
- Heavy walled tubular arms
- Integrated locking collars and hex shaft drive units
- Double plated rotor supports
- Adjustable wheel yoke, swivel and tilt

	<b>PRZ-5500</b>
Weight	1594 lbs.
Req. HP	Minimum 35 HP
Working width	18’ 1”
Lift	Hydraulic
Tilt	Hydraulic
Rotor style	U-joint
Rotors	4 / 24
Tires	18 x 8.5 / 8

## Introduction

---

### 1. Introduction

Before the first use of the machine, you must thoroughly read and understand this instruction manual, and follow all the instructions contained herein.



ATTENTION!

Read the instruction manual before use.

This instruction manual contains a description of hazards that can occur in case of non-compliance with safety rules during operation and maintenance of the machine. The instruction manual specifies precautionary measures to be taken to minimize or avoid risks.

This manual also contains principles of correct use of the machine and specifies the maintenance operations to be performed.

If you do not understand any information contained herein, please contact the manufacturer directly.



ATTENTION!

This warning symbol alerts about a hazard. The warning symbol indicates an important hazard information provided in the instruction manual. Please read the information, follow the instructions and exercise particular caution.

## Introduction

---

### 2. Machine identification

Each tedder has its rating plate, containing the most important identification data. The rating plate is located on the machine in such place, that it is easy to find and to read.



Fig. 1 Rating plate

Manufacturer's rating plate includes:

The full name of the manufacturer.

The serial number of the tedder.

The model number of the tedder.

## Introduction

---

### 3. Rules of safe operation

#### 3.1. User safety

The tedder can only be used by adults, who are properly qualified and have learned its operation and have read this User Manual. The tedders should be operated with all necessary precautions, in particular:

- In addition to this instruction manual, also observe the general rules of health and safety at work.
- Observe warning symbols placed on the machine.
- It is strictly forbidden, to operate the machine by persons under the influence of alcohol or other intoxicants.
- Never allow the vehicle towing the tedder to be driven by a person other than the shredder operator, and under no circumstances allow any other persons to be on the vehicle, or by the machine, during its operation.
- The tedder may be operated by a person with the proper authorization to drive the vehicle to which it is attached, in accordance with the manufacturer's instructions.
- The operating position of the operator, while working with the tedder is the cabin of the vehicle to which the machine is attached.
- Please note, that there are many elements of the machine that may cause an injury (sharp edges, protruding parts, etc.). While using the equipment, exercise particular caution when moving close to the above-mentioned critical spots and obligatorily use the following personal protection equipment:
  - protective clothing,
  - protective gloves,
  - safety shoes.
- It is forbidden to carry persons or objects on the machine.
- It is forbidden that the machine should be operated by persons who are not familiarized with the instruction manual.
- The person operating the tedder should be provided with a first-aid kit containing measures for first aid, along with instructions regarding their use.
- When driving a vehicle with the Tedder attached, but not working machine, ensure the safe distance of spring tines from the ground (14-18cm).
- Before starting work, the tedder must be set in the transport position.
- Take special care when driving on public roads and comply with the applicable road traffic regulations.
- The user is obliged to ensure the visibility of a machine during its transportation: use the reflective markings and warning signs - may be included as an option.

## Introduction

---

- Adjust the transport speed to the condition of the road. The speed should not exceed 50 km/h.
- Do not leave the vehicle with the machine on a hillside or other sloping surfaces, without securing the vehicle from rolling down. Put wedges under the wheels of the vehicle.
- The tedder must be adjusted to working height, during its attachment to the vehicle.
- Any preparations, fitting, dismantling or adjustment can be performed only after the drive has been switched off, the engine stopped, the vehicle immobilized and when all the moving parts of the machine have stopped.
- After first hour of operation, check the status of all separable connections, including screws.
- The tedder should be kept on a flat, level, paved surface, out of the reach of strangers and animals. Use the support foot for stabilizing the tedder.
- Exercise caution during the hooking up and unhooking the tedder. Pay particular attention to the integrity of the connections and pins through which the tedder is connected with the tractor.
- Before using you must check the condition of machine and of the vehicle it is attached to. The vehicle and the tedder unit must be in good technical condition. Worn or damaged parts must be replaced immediately.
- The tedder must be equipped with all the safety guards (provided by the manufacturer), preventing access to any moving parts. The guards must be complete and fully operational.
- It is not allowed to work with the tedder without safety guards. It is not allowed to work with damaged safety guards.
- It is not allowed to lift the tedder arms when the drive is switched on and rotors are rotating.
- It is not allowed to control the lever of hydraulic lift from outside of the tractor.
- Before beginning to work with the machine, you should familiarize yourself with the way it operates, occupational safety rules and recommendations for maintenance and adjustment procedures, by reading this User Manual.
- The instruction manual should be kept on the machine. When letting the machine to other user, you must ensure that it is in good mechanical condition, and that the instruction manual is also handed over.
- Do not attach additional transport means to the machine.
- During commissioning, check the machine functions and make the initial adjustments.
- Due to the natural wear and tear the state and completeness of machine spring tines should be controlled, using the recommendations described in the chapter. "7 Operation and maintenance" and "6.6.5 Tedder tines operation".

## Introduction

---

- When commissioning and transporting the machine, inspect its technical condition to check for damage.
- It is forbidden to stand under the raised arms of the tedder, as it may result in being crushed by the structural elements.
- When adjusting, do not place your fingers and limbs between the structural elements of the machine.
- It is forbidden to leave a tractor's cabin when the machine is running, and before all the rotating parts have stopped.
- Operator of the vehicle working with a tedder, must ensure that no person is approaching the machine during its operation.
- Operator of the vehicle, working with a tedder, must ensure that no person is approaching the machine during its operation, and people should maintain a **distance of not less than 50 meters** from the working tedder.
- Before switching on the machine drive, place the machine in the working position.
- You must not overload the PTO shaft of the machine by engaging the clutch too quickly.
- When turning, reversing, or maneuvering the machine, you must ensure, that your visibility is adequate, or get assistance from a properly trained person.
- It is prohibited to work while reversing the vehicle.
- When connecting the hydraulic lines, make sure that the hydraulic system is not pressurized.
- Do not stay between the vehicle and the machine when the vehicle engine is running.
- Working on slopes exceeding 10% is not allowed.
- Exercise particular caution when working on slopes.
- When driving on curves and turning, switch off the PTO drive.
- It is forbidden to operate the machine too close to public areas (parks, schools, etc.) You must also avoid stony grounds to keep stones and other objects being thrown from the machine.
- Do not allow the PTO working speed to exceed 540 rpm, while driving speed must be adjusted to the type of work being done.
- Working with damaged or incomplete articulated power-take off shaft is forbidden. It is strongly forbidden to work without covers on moving parts.
- The jointed-telescopic shaft has marks indicating, which end must be connected to the tractor before work please make sure that the direction of rotation of the shaft is correct.
- Never leave the vehicle unattended with the engine running. Before leaving the driver's seat (the

## Introduction

---

- After work it is recommended to clean and wash the machine in the wash fitted with a sewage treatment plant or a settler to neutralize the resulting wastewater.
- The machine should be kept and stored in places protected from unauthorized access of persons and animals, thus eliminating the risk of accidental injuries, on a flat, hardened surface, under a protective canopy.
- In case of failure, immediately turn off the drive transmitted from the vehicle.
- When working with the machine, use hearing protection headphones to minimize the exposure to noise. In addition, it is recommended to close the doors and windows of the vehicle's cabin.



Failure to follow the above rules may be dangerous for the operator and bystanders and can cause damage to the tedder. The user is responsible for any damages caused by the non-compliance to the above principles.

## Introduction

### 3.2. Residual risk assessment

BELCO Resources Equipment has made every effort to ensure that the design of the machine, and its intended use, do not pose any risk to persons or the environment.

Due to the nature of work being done by the tedder and, for example, the inability to completely cover the machine, certain risk factors may occur.

<i>No.</i>	<i>Hazard</i>	<i>Hazard source (cause)</i>	<i>Hazard protection measures</i>
1	Overloading the locomotor system (physical load)	Working in a standing position, inclined-forced position, walking, moving objects	Reading and understanding the instruction manual, workplace training including lifting standards for the manual transportation labor, proper techniques for lifting and carrying weights, use of another person's assistance, moving devices such as jacks, winches
2	Fall on the same level (tripping, slipping, etc.)	Uneven terrain, messy environment – e.g. objects standing or lying around, cables lying on communication roads, slippery surfaces.	Suitable footwear, leveled terrain, paying attention, maintaining order, familiarization with the instruction manual
3	Hitting stationary, protruding parts of the machine	Machine and its surroundings	Proper positioning of a machine, safe space to move around, proper organization of work, paying attention, familiarization with the instruction manual
4	Being hit by moving objects	Tedded plants, accidentally removed soil, stones	Maintaining caution, marking the danger zone, banning walking in the immediate surrounding of the working machine, banning staying in the immediate surrounding of the working machine, use of personal protective equipment (helmet, safety glasses), Reading the instruction manual
5	Sharp, dangerous edges	Protruding structure elements of the machine, use of hand tools	Personal protective equipment – protective gloves, buttoned up work clothes, paying special attention
6	Transmissions	Power take-off shaft, no guards of movable parts	Do not move around, approach a machine, which is running. Become familiar with the User Manual
7	Weight of the standing machine	Improper mounting, aggregating, wrong setting of the machine, improper operation	Paying special attention, use of personal protective equipment - safety footwear, protective gloves, secure setting of the machine, help of another person, use of lifting jacks, davits, familiarization with the instruction manual



## Important Safety Information

### Safety

It is important that you read the entire manual and to become familiar with this product before you begin using it. This product is designed for certain applications only. The manufacturer cannot be responsible for issues arising from modification. We strongly recommend this product not be modified and /or used for any application other than that for which it is designed. If you have any questions relative to a particular application, DO NOT use the product until you have first contacted us to determine if it can or should be performed on the product.

Read and understand this manual and all safety signs before operating and maintaining . Review the safety instructions and precautions annually.

### Safety Signal Words

**TAKE NOTE! This safety alert symbol found though out this manual is used to call you attention to instructions involving you personal safety and the safety of others. Failure to follow these instructions can result in injury or death.**



**This symbol means:  
Attention!  
Become alert!  
Your safety is involved!**

Note the use of the signal words, DANGER, WARNING and CAUTION with the safety messages. The appropriate signal word for each has been selected using the following guidelines:



**DANGER:** Indicates an imminently hazardous situation that, if not avoided, will result in death or serious injury. This signal word is to be limited to the most extreme situations typically for machine components which, for functional purposes, cannot be guarded.



**WARNING:** Indicates a potentially hazardous situation that, if not avoided, could result in death or serious injury, and includes hazards that are exposed when guards are removed. It may also be used to alert against unsafe practices.



**CAUTION:** Indicates a potentially hazardous situation that, if not avoided, may result in minor or moderate injury. It may also be used to alert against unsafe practices.

## Important Safety Information

---

### General Safety Guidelines

Safety of the operator is one of the main concerns in designing and developing a new piece of equipment. Designers and manufacturers build in as many safety features as possible. However, every year many accidents occur which could have been avoided by a few seconds of thought and a more careful approach to handling equipment. You, the operator, can avoid many accidents by observing the following precautions in this section. To avoid personal injury, study the following precautions and insist those working with you, or for you, follow them.

Replace any DANGER, WARNING, CAUTION or instruction safety decal that is not readable or is missing. Location of such decals are indicated in this manual. Do not attempt to operate this equipment under the influence of drugs or alcohol.

Review the safety instructions with all users annually.

This equipment is dangerous to children and persons unfamiliar with its operation. The operator should be a responsible adult familiar with farm machinery and trained in this equipment's operations. **Do not allow persons to operate or assemble this unit until they have read this manual and have developed a thorough understanding of the safety precautions and of how it works.**

To prevent injury or death, use a tractor equipped with a Roll Over Protection System (ROPS). Do not paint over, remove or deface any signs or warning decals on your equipment. Observe all safety signs and practice the instructions on them.

Never exceed the limits of a piece of machinery. If its ability to do a job, or to do so safely, is in question - **Don't try it!**



### Safety Decal Care

- Keep safety signs clean and legible at all times.
- Replace safety signs that are missing or have become illegible.
- Replaced parts that displayed a safety sign should also display the current safety sign
- Safety signs are available from your Distributor or Dealer Parts Department or the factory.

## Important Safety Information

---

### How to install Safety Signs:

- Be sure that the installation area is clean and dry.
- Decide on the exact position before you remove the backing paper.
- Remove the smallest portion of the split backing paper.
- Align the decal over the specified area and carefully press the small portion with the exposed sticky backing in place.
- Slowly peel back the remaining paper and carefully smooth the remaining portion of the decal in place.
- Small air pockets can be pierced with a pin and smoothed out using the piece of decal backing paper.



### Before Operation

- Carefully study and understand this manual.
- Do not wear loose-fitting clothing, which may catch in moving parts.
- Always wear protective clothing and substantial shoes.
- Assure that all tires are inflated evenly.
- Give the unit a visual inspection for any loose bolts, worn parts or cracked welds, and make necessary repairs. Follow the maintenance safety instructions included with this manual.
- Be sure that there are no tools lying on or in the equipment.
- Do not use the unit until you are sure that the area is clear, especially of children and animals.
- Don't hurry the learning process or take the unit for granted. Ease into it and become familiar with your new equipment.
- Practice operation of your equipment and its attachments. Completely familiarize yourself and other operators with its operation before using.
- Use a tractor equipped with a Roll Over Protection System (ROPS) and fasten your seat belt prior to starting engine.
- The manufacturer does not recommend usage of tractor with ROPS removed.
- Move tractor wheels to the widest recommended settings to increase stability.
- Securely attach to towing unit. Use a high strength, appropriately sized hitch pin with a mechanical retainer and attach safety chain.
- Do not allow anyone to stand between the tongue or hitch and the towing vehicle when backing up to the equipment.
- Do not use the unit until you are sure that the area is clear, especially of children and animals.

## Important Safety Information

---



### During Operation

- Children should not be allowed on the product.
- Clear the area of small children and bystanders before moving the feeder.
- If using a towing unit, securely attach feeder by using a hardened 3/4" pin, a metal retainer, and safety chains if required. Shift towing unit to a lower gear before going down steep downgrades, thus using the engine as a retarding force. Keep towing vehicle in gear at all times. Slow down for corners and rough terrain.
- Make sure you are in compliance with all local and state regulations regarding transporting equipment on public roads and highways. Lights and slow moving signs must be clean and visible by overtaking or oncoming traffic when feeder is transported.
- Beware of bystanders, **particularly children!** Always look around to make sure that it is safe to start the engine of the towing vehicle or move the unit. This is particularly important with higher noise levels and quiet cabs, as you may not hear people shouting.
- **NO PASSENGERS ALLOWED!** Do not carry passengers anywhere on, or in, the tractor or equipment, except as required for operation.
- Keep hands and clothing clear of moving parts.
- Do not clean, lubricate or adjust your equipment while it is moving.
- When halting operation, even periodically, set the tractor or towing vehicle brakes, disengage the PTO, shut off the engine and **remove the ignition key.**
- Be especially observant of the operating area and terrain. Watch for holes, rocks or hidden hazards. Always inspect the area prior to operation.
- **DO NOT** operate near the edge of drop-offs or banks.
- **DO NOT** operate on steep slopes as overturns may result.
- Operate up and down (not across) intermediate slopes. Avoid sudden starts and stops.

## Important Safety Information

---



### Highway and Transport Operations

- Adopt safe driving practices.
- Keep the brake pedals latched together at all times. **Never use independent braking with machine in tow as loss of control and/or upset of unit can result.**
- Always drive at a safe speed relative to local conditions and ensure that your speed is low enough for an emergency stop to be safe and secure. Keep speed at a minimum.
- Reduce speed prior to turns to avoid the risk of overturning.
- Avoid sudden uphill turns on steep slopes.
- Always keep the tractor or towing vehicle in gear to provide engine braking when going downhill. Do not coast.
- Do not drink and drive!
- Comply with state and local laws governing highway safety and movement of farm machinery on public roads.
- Use approved accessory lighting flags and necessary warning devices to protect operators of other vehicles on the highway during daylight and nighttime transport. Various safety lights and devices are available from your dealer.
- The use of flashing amber lights is acceptable in most localities. However, some localities prohibit their use. Local laws should be checked for all highway and marking requirements.
- When driving the tractor and equipment on the road or highway under 40 kph (20 mph) at night or during the day, use the amber warning lights and a slow moving vehicle (SMV) identification emblem.
- Plan your route to avoid heavy traffic.
- Be a safe and courteous driver. Always yield to oncoming traffic in all situations, including narrow bridges, intersections, etc.
- Be observant of bridge loading ratings. Do not cross bridges rated at lower than the gross weight at which you are operating.
- Watch for obstructions overhead and to the side while transporting.
- Always operate in a position to provide maximum visibility at all times. Make allowances for increased length and weight of the equipment when making turns, stopping the unit, etc.
- Pick the most level route when transporting across fields. Avoid the edges of ditches or gullies and steep hillsides.
- Be extra careful when working in inclines.

## Important Safety Information

---



### Highway and Transport Operations

- Maneuver the tractor or towing vehicle at safe speeds.
- Avoid overhead wires or other obstacles. Contact with overhead lines could cause serious injury or death.
- Avoid loose fill, rocks and holes, they can be dangerous for equipment operation or movement.
- Allow for unit length when making turns,
- Operate the towing vehicle from the operator's seat only.
- Never stand alongside of unit with engine running or attempt to start engine and/or operate machine while standing alongside of unit.
- Never leave running equipment attachments unattended.
- As a precaution, always recheck the hardware on equipment following every 100 hours of operation. Correct all problems. Follow the maintenance safety procedures.

## Assembly

---

### Rules of safe operation

#### User safety

- The tedder can only be used by adults, who are properly qualified and have learned its operation and have read this User Manual. The tedders should be operated with all necessary precautions, in particular:
  - In addition to this instruction manual, also observe the general rules of health and safety at work.
  - Observe warning symbols placed on the machine.
  - It is strictly forbidden, to operate the machine by persons under the influence of alcohol or other intoxicants.
  - Never allow the vehicle towing the tedder to be driven by a person other than the shredder operator, and under no circumstances allow any other persons to be on the vehicle, or by the machine, during its operation.
  - The tedder may be operated by a person with the proper authorization to drive the vehicle to which it is attached, in accordance with the manufacturer's instructions.
  - The operating position of the operator, while working with the tedder is the cabin of the vehicle to which the machine is attached.
  - Please note, that there are many elements of the machine that may cause an injury (sharp edges, protruding parts, etc.). While using the equipment, exercise particular caution when moving close to the above-mentioned critical spots and obligatorily use the following personal protection equipment:
    - protective clothing,
    - protective gloves,
    - safety shoes.
  - It is forbidden to carry persons or objects on the machine.
  - It is forbidden that the machine should be operated by persons who are not familiarized with the instruction manual.
  - The person operating the tedder should be provided with a first-aid kit containing measures for first aid, along with instructions regarding their use.
  - When driving a vehicle with the Tedder attached, but not working machine, ensure the safe distance of spring tines from the ground (14-18cm).
  - Before starting work, the tedder must be set in the transport position.
  - Take special care when driving on public roads and comply with the applicable road traffic regulations.
  - The user is obliged to ensure the visibility of a machine during its transportation: use the reflective markings and warning signs - may be included as an option.

Torque Specifications for Common Bolt Sizes															
Inches		Bolt Head Identification						Metric		Bolt Head Identification					
										5.8		8.8		10.9	
Bolt size (inches)	Thread pitch	Grade 2		Grade 5		Grade 8		Class 5.8		Class 8.8		Class 10.9			
		N.m	ft-lb	N.m	ft-lb	N.m	ft-lb	N.m	ft-lb	N.m	ft-lb	N.m	ft-lb		
1/4"	20	7	5	11	8	16	12	M5	0.08	4	3	6	4	9	7
1/4"	28	8	6	13	10	19	14	M6	1	6	4	10	7	15	11
5/16"	18	15	11	24	17	33	25	M8	1.25	16	12	25	18	36	27
5/16"	24	17	13	26	19	37	27	M8	1	17	13	26	19	38	28
3/8"	16	27	20	42	31	59	44	M10	1.5	31	23	48	35	71	52
3/8"	24	31	23	47	35	67	49	M10	1.25	33	24	51	38	75	55
7/16"	14	43	32	67	49	95	70	M10	1	35	26	53	39	78	58
7/16"	20	48	36	75	55	106	78	M12	1.75	54	40	84	62	123	91
1/2"	13	66	48	102	75	144	106	M12	1.5	56	41	87	64	128	94
1/2"	20	75	55	115	85	163	120	M12	1.25	59	44	90	66	133	98
9/16"	12	95	70	147	109	208	154	M14	2	84	62	133	98	195	144
9/16"	18	106	79	164	121	232	171	M14	1.5	94	69	142	105	209	154
5/8"	11	132	97	203	150	287	212	M16	2	131	97	206	152	302	223
5/8"	18	149	110	230	170	325	240	M16	1.5	141	104	218	161	320	236
3/4"	10	233	172	361	266	509	376	M18	2.5	181	133	295	218	421	310
3/4"	16	261	192	403	297	569	420	M18	2	196	145	311	229	443	327
7/8"	9	226	167	582	430	822	606	M18	1.5	203	150	327	241	465	343
7/8"	14	249	184	642	473	906	668	M20	2.5	256	189	415	306	592	437
1"	8	339	250	873	644	1232	909	M20	1.5	288	212	454	335	646	476
1"	12	371	273	955	704	1348	995	M22	2.5	344	254	567	418	807	595
1-1/8"	7	480	354	1077	794	1746	1288	M22	1.5	381	281	613	452	873	644
1-1/8"	12	539	397	1208	891	1958	1445	M24	3	444	327	714	526	1017	750
1-1/4"	7	677	500	1519	1120	2463	1817	M24	2	488	360	769	567	1095	808
1-1/4"	12	750	553	1682	1241	2728	2012	M27	3	656	484	1050	774	1496	1103
1-3/8"	6	888	655	1992	1469	3230	2382	M27	2	719	530	1119	825	1594	1176
1-3/8"	12	1011	746	2268	1673	3677	2712	M30	3.5	906	668	1420	1047	2033	1499
1-1/2"	6	1179	869	2643	1949	4286	3161	M30	2	1000	738	1600	1180	2250	1659
1-1/2"	12	1326	978	2974	2194	4823	3557	M36	4	1534	1131	2482	1830	3535	2607

**Notes:**

This chart is an approximate estimate of torque values.

Always tighten hardware to these values unless a different torque value or tightening procedure is listed for a specific application.

Fasteners must always be replaced with the same grade as specified in the manual.

Always use the proper tool for tightening hardware: SAE for SAE hardware and Metric for Metric hardware.

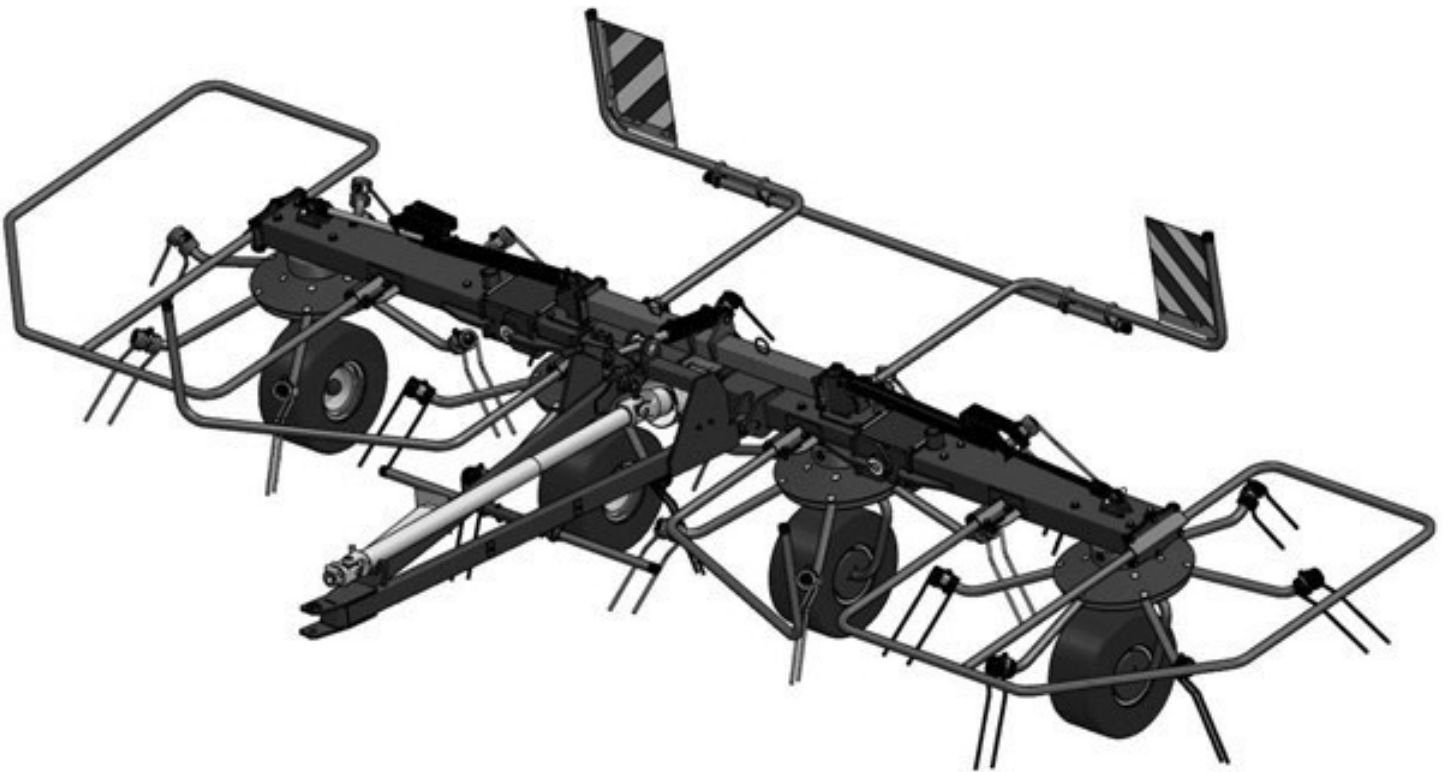
Make sure that fastener threads are clean and that you properly start thread engagement.

**Page left blank intentionally**

**Page left blank intentionally**



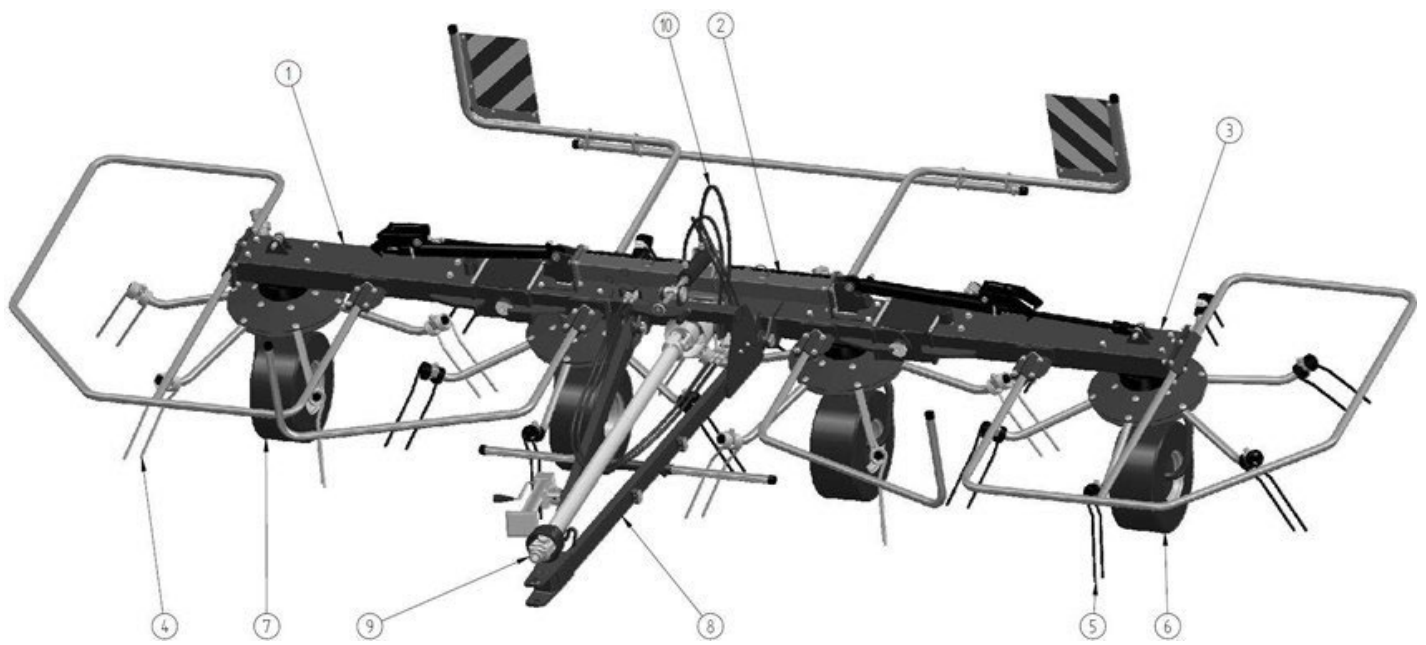
# 4 Rotor Tiller PRZ-5500



## Parts Manual

# General Design

---

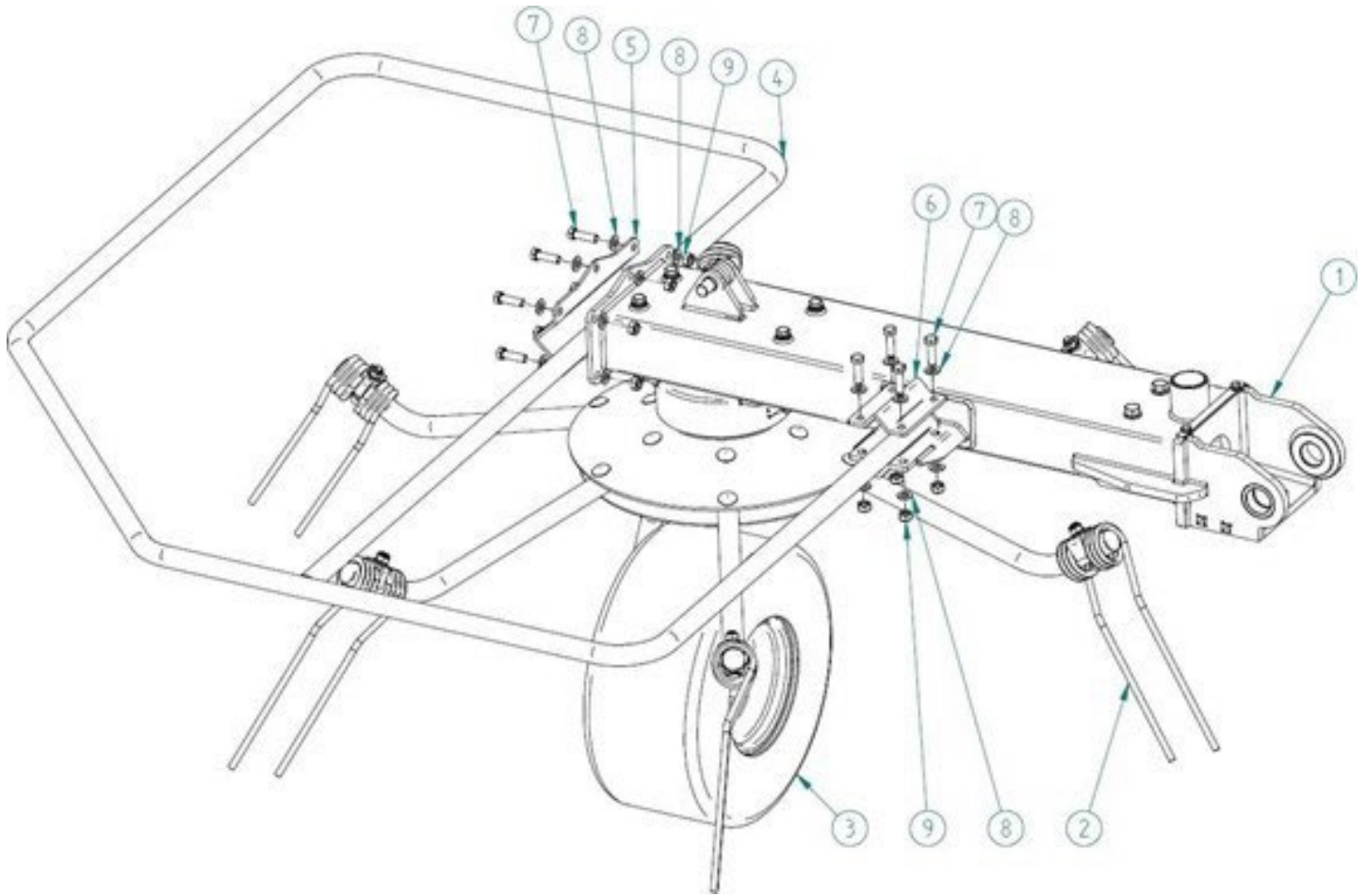


## General Design

---

<b>Item</b>	<b>Part #</b>	<b>Description</b>	<b>Qty.</b>
1	For Reference Only	Right Side Frame Set	1
2	For Reference Only	Main Frame Set	1
3	For Reference Only	Left Side Frame Set	1
4	PR-T710	Spring Tine, Left (Yellow)	2
5	PR-T809	Spring Tine- Right (Black)	2
6	For Reference Only	Left Wheel Set	2
7	For Reference Only	Right Wheel Set	2
8	For Reference Only	Hitch	1
9	PR-T009	PTO Shaft 460NM L-1600 withM34 ratchet coupling	1
10	For Reference Only	Hydraulic system	1

# Right Side Frame Set

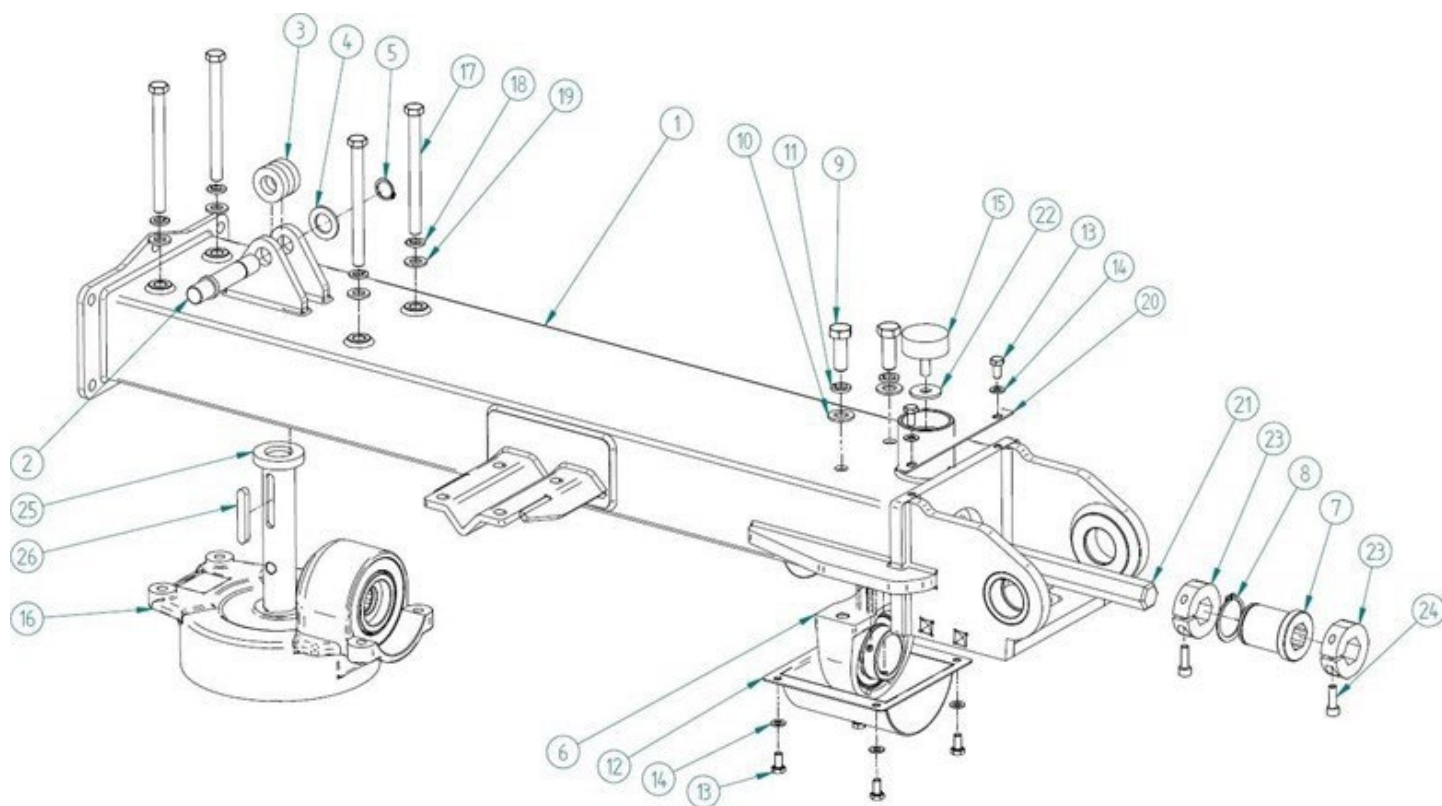


## Right Side Frame Set

---

<b>Item</b>	<b>Part #</b>	<b>Description</b>	<b>Qty.</b>
1	For Reference Only	Right side frame	1
2	PR-T710	Spring Tine, Left (Yellow)	1
3	For Reference Only	Right wheel set	1
4	PR-T104	Side guard	1
5	PR-T506	Side guard fastener	1
6	PR-T505	Guard fastener	1
7	BM1217540	Bolt M12-1.75x40 8.8 galv.	10
8	FW12	Flat washer M12 galv.	20
9	LN12175	Self-locking nut M12-1.75 galv.	10

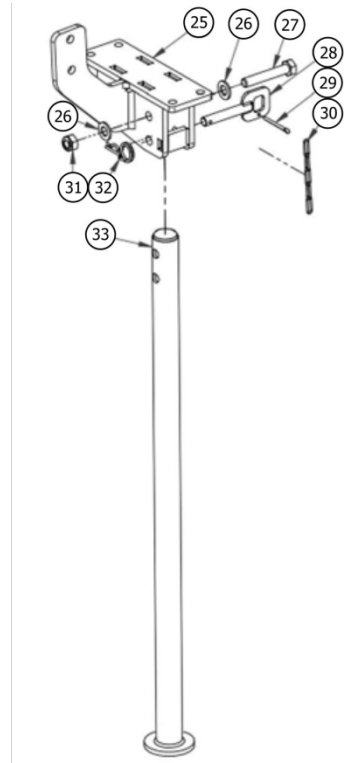
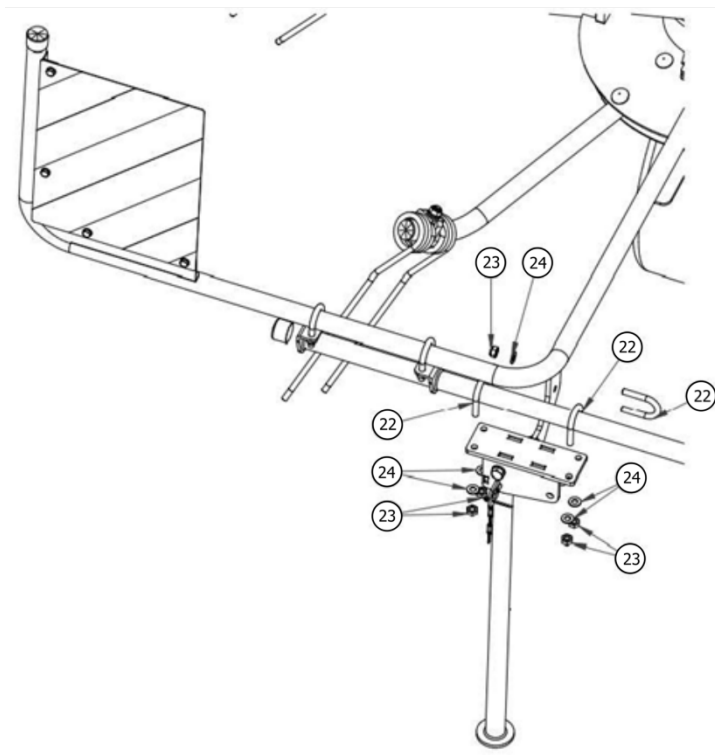
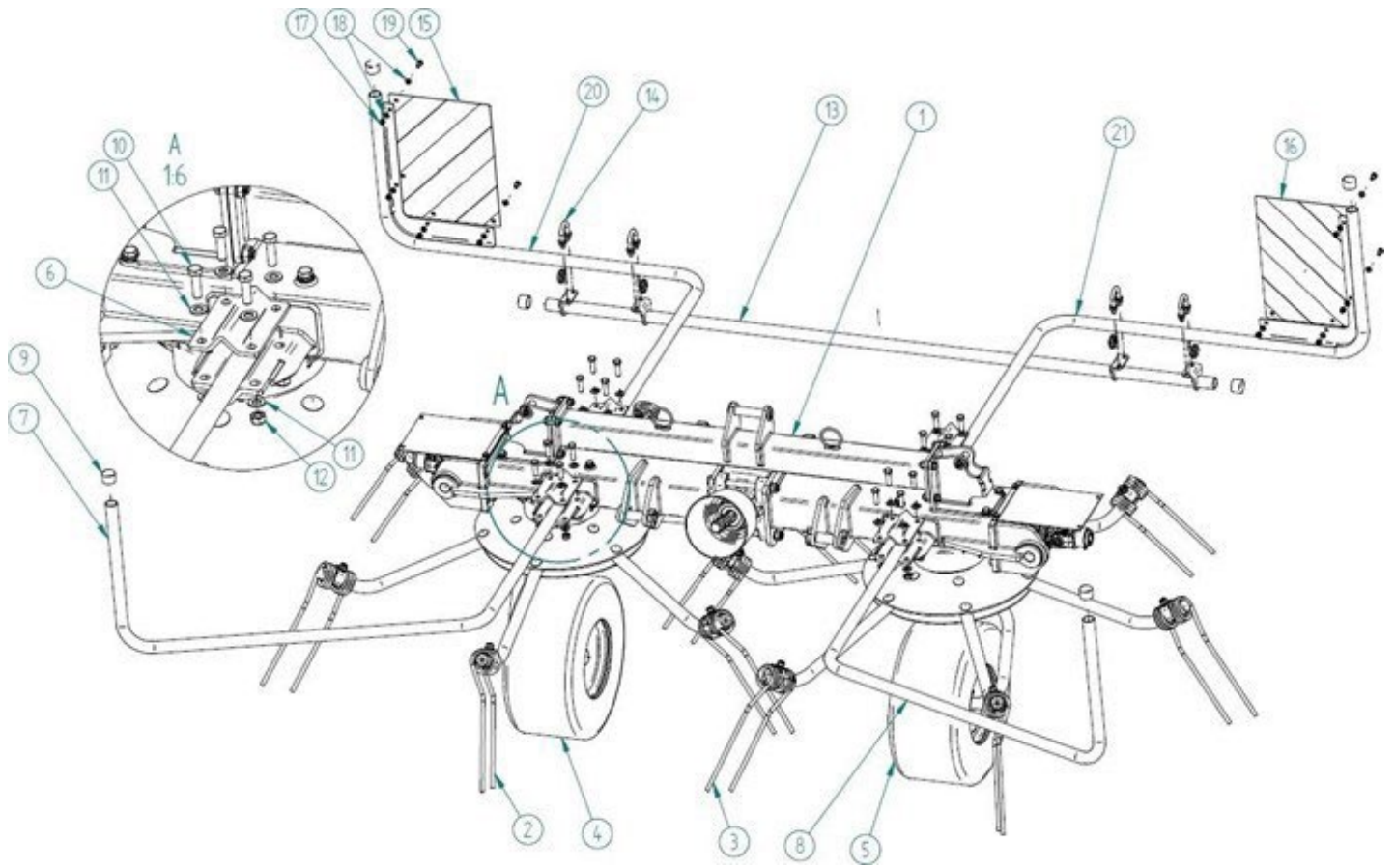
# Right Side Frame



## Right Side Frame

Item	Part #	Description	Qty.
1	PR-T201	Side Frame	1
2	PR-T202	Side Frame Closure Bolt	1
3	PR-T203	Actuator Closure Bolt Sleeve	2
4	FW20	Flat Washer- M20- GALV	1
5	SRE-20	Snap Ring- M20 (External)	1
6	PR-T206	Self-adjusting Bearing- UCPA209	1
7	PR-T407	Shaft Support Sleeve	1
8	SRE-45	Snap Ring- M45 (External)	1
9	BM142040	Bolt- M14 x 2.0 x 40- 8.8- GALV	2
10	FW14	Flat Washer- M14- GALV	2
11	LW14	Lock Washer- M14- GALV	2
12	PR-T212	Bearing Guard	1
13	BM0812516	Bolt- M8 x 1.25 x 16- 8.8- GALV	6
14	FW08	Flat Washer- M8- GALV	6
15	PR-T215	Rubber Bumper- M50 x 20	1
16	PR-T216	Side Gear- TB-319 J	1
17	BM12175140	Bolt- M12 x 1.75 x 140- 8.8- GALV	4
18	LW12	Lock Washer- M12- GALV	4
19	FW12	Flat Washer- M12- GALV	4
20	PR-T220	Joint Guard Retainer	1
21	PR-T221	Side Drive Shaft	1
22	LFW10	Large Flat Washer M10- GALV	1
23	PR-T223	Shaft Lock Collar	2
24	BM0812525	Bolt- M8 x 1.25 x 25- 8.8- GALV	2
25	PR-T225	Wheel Pin	1
26	KM100863	Key- M10 x 8 x 63	1

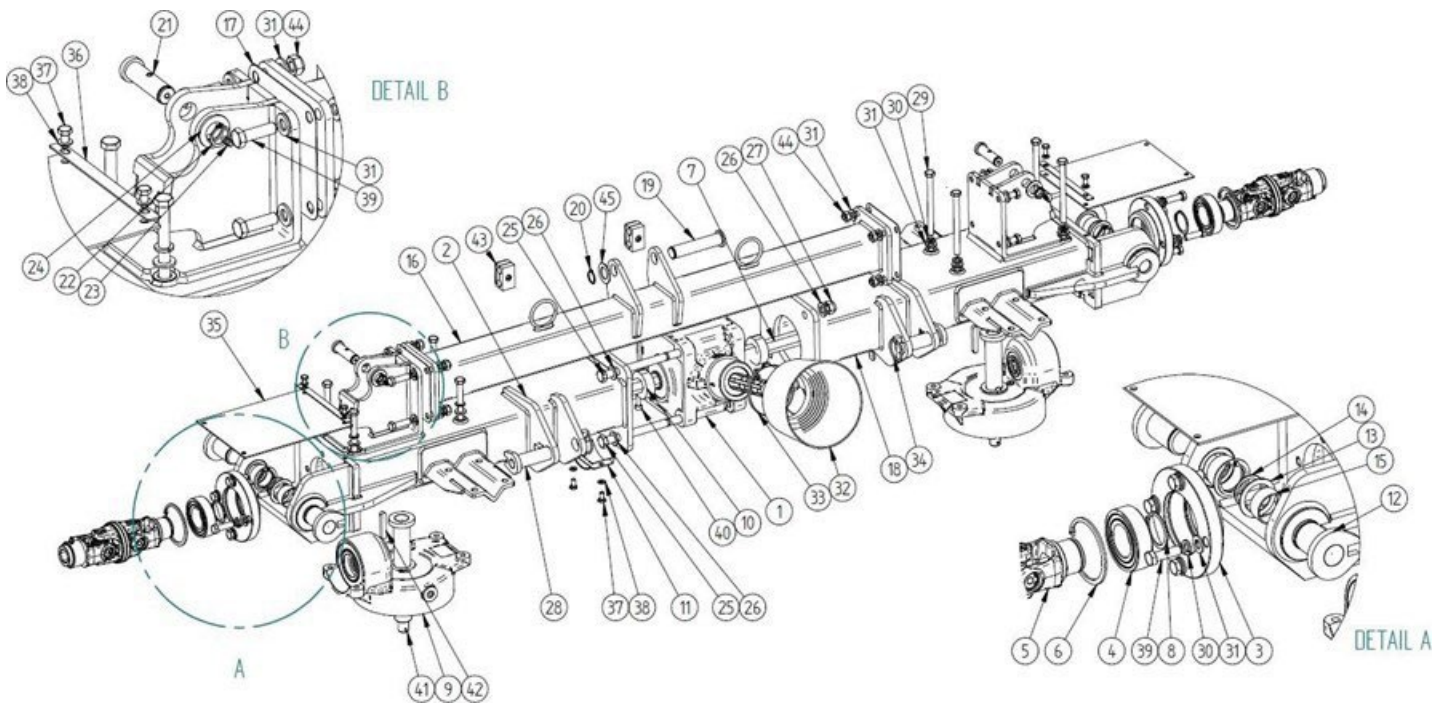
# Main Frame Set



## Main Frame Set

Item	Part #	Description	Qty.
1	For Reference Only	Middle Frame Set	1
2	PR-T809	Spring Tine- Right (Black)	1
3	PR-T710	Spring Tine, Left (Yellow)	1
4	For Reference Only	Right Wheel Set	1
5	For Reference Only	Left Wheelset	1
6	PR-T505	Guard Fastener	4
7	PR-T307	Right Front Guard	1
8	PR-T308	Left front Guard	1
9	PR-T309	Dust Cover- 1"	6
10	BM1217540	Bolt- M12 x 1.75 x 40- 8.8- Galv	16
11	FW12	Flat Washer- M12- Galv	32
12	LN12175	Self-locking Nut- M12- Galv	16
13	PR-T313	Connector for Rear Guards	1
14	PR-T314	Pipe Clamp- M10 x 35	4
15	PR-T315	Reflective Plate, two sided	1
16	PR-T315	Reflective Plate, two sided	1
17	LN108125	Self-locking Nut- M8 x 1.25	8
18	FW08	Flat Washer- M8- Galv	16
19	BM0812516	Bolt- M8 x 1.25 x 16- 8.8- Galv	8
20	PR-T320	Right Rear Guard	1
21	PR-T321	Left Rear Guard	1
22	PR-T1233	U-bolt M10x35	3
23	LN101015	Nut self-locking M10-1.5	6
24	FW10	Washer flat M10	6
25	PR-T1234	Stand mount; PRZ-5500 PK-12.01.00.00	1
26	FW12	M12 plain washer	2
27	TW18215	M12x70-8.8 galv. Full thread bolt	1
28	PR-T1235	Stand pin; PRZ-5500 PK-5500 PK-12.03.00.00	1
29	PR-T1236	40x50 pin	1
30	PR-T1237	Chain 2.0 galv.	1
31	LN101215	M12 galv. Self-stop nut	1
32	PR-T1238	Pin 3x67 galv.	1
33	PR-T1239	Stand; PRZ-5500 PK-12.02.00.00	1

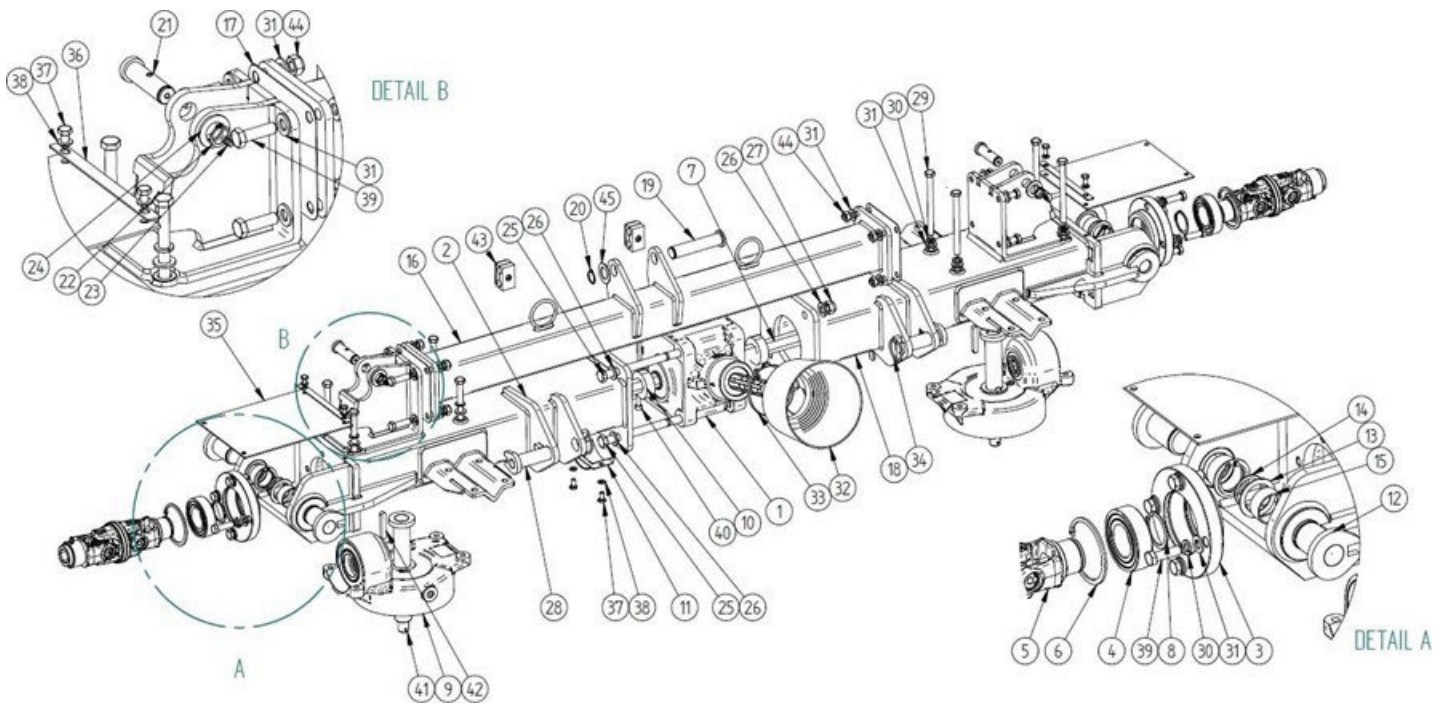
# Middle Frame Set



## Middle Frame Set

Item	Part #	Description	Qty.
1	PR-T401	Center Gear Box TB-318 J	1
2	PR-T402	Middle Frame	1
3	PR-T403	Joint Support	2
4	B22092RS	Ball Bearing- 2209 – 2RS	2
5	PR-T405	Double Cardan Joint	2
6	SRE-85	Snap Ring- M85 (External)	2
7	PR-T207	Middle Drive Shaft	1
8	SRE-45	Snap Ring- M45 (External)	2
9	PR-T221	Side Transmission TB-319 J	2
10	PR-T223	Shaft Lock Collar	2
11	PR-T411	Transmission Guard	2
12	PR-T412	Joint Pin	4
13	PR-T413	Joint Pin Washer	4
14	SRE-40	Snap Ring- M40 (External)	4
15	PR-T415	Sliding Sleeve	4
16	PR-T416	Connecting Beam	1
17	PR-T417	Fastening Sheet	2
18	PR-T418	Middle Frame	1
19	PR-T419	Hitch Actuator Pin	1
20	SRE-25	Snap Ring- M25 (External)	1
21	PR-T421	Arm Actuator Pin	2
22	SRE-20	Snap Ring- M20 (External)	2
23	GN061S	Grease Nipple- Straight- M6 x 1.0	2
24	FW20	Flat Washer- M20- Galv	2
25	BM1620200	Bolt- M16 x 2.0 x 200 Galv	4
26	FW16	Flat Washer- M16- GALV	8
27	LNM1620	Self-locking Nut- M16 x 2.0- Galv	4
28	PR-T428	Hitch Bolt Pin	2
29	BM12175140	Bolt- M12 x 1.75 x 140 -8.8- Galv	8
30	LW12	Lock Washer- M12- Galv	16
31	FW12	Flat Washer- M12- Galv	32
32	PR-T432	PTO Guard	1
33	PR-T433	Band Clip- M80 x 100	1
34	RC3	R Clip- M3	2
35	PR-T435	Joint Shield	2
36	PR-T220	Joint Guard Retainer	2
37	BM0812516	Bolt- M8 x 1.25 x 16- 8.8- Galv	8
38	FW08	Flat Washer- M8- Galv	8
39	BM1217540	Bolt- M12 x 1.75 x 40- 8.8- Galv	16
40	BM0812525	Bolt- M8 x 1.25 x 25- 8.8- Galv	2
41	PR-T225	Wheel Pin	2
42	KM100863	Key- M10 x 8 x 63	2

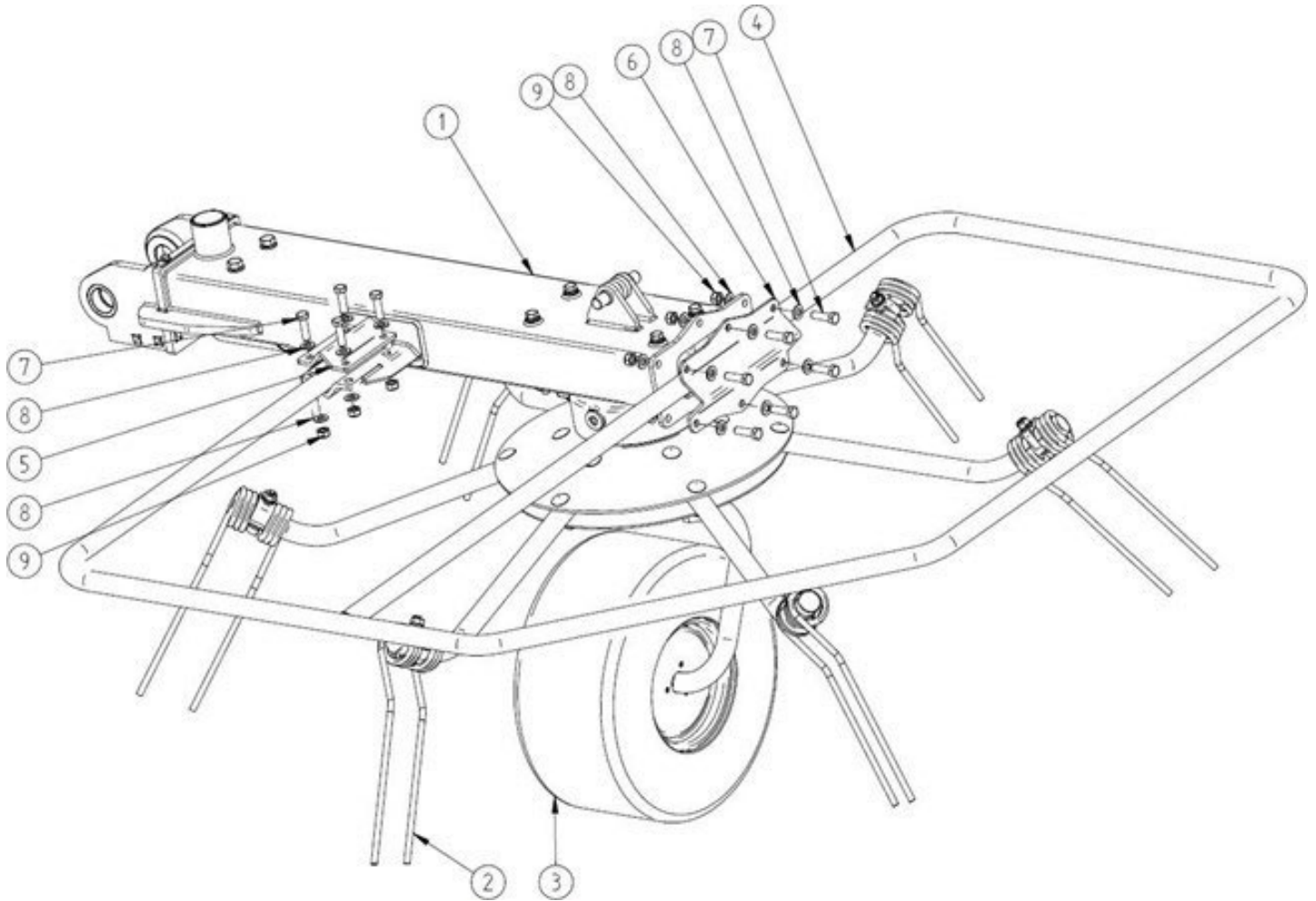
# Middle Frame Set



## Middle Frame Set

<b>Item</b>	<b>Part #</b>	<b>Description</b>	<b>Qty.</b>
43	PR-T443	Hose Fastener	2
44	LN12175	Self-locking Nut- M12 x 1.75- Galv	8
45	FW25	Flat Washer- M25- Galv	1

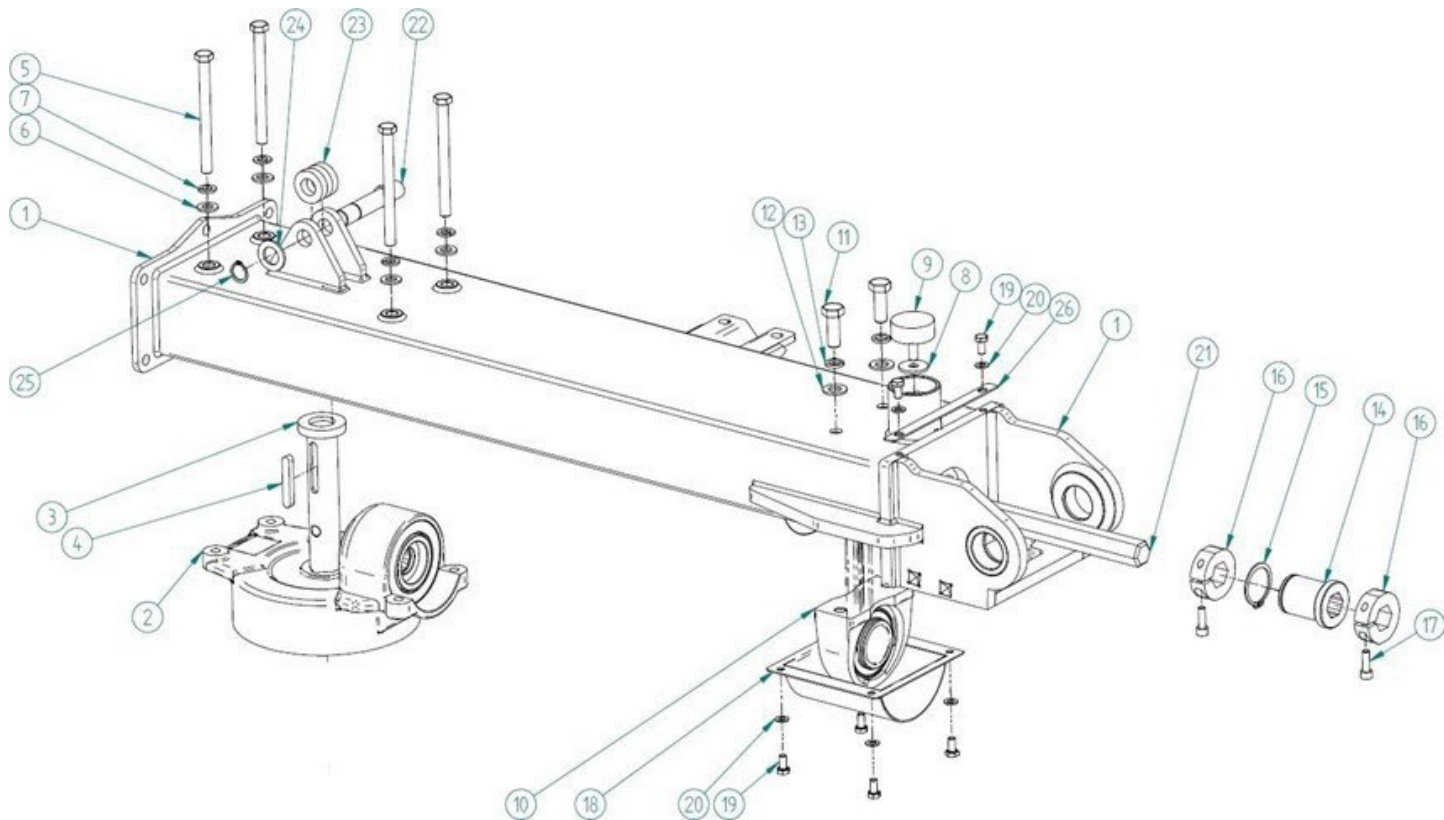
# Left Side Frame Set



## Left Side Frame Set

<b>Item</b>	<b>Part #</b>	<b>Description</b>	<b>Qty.</b>
1	For Reference Only	Left Side Frame	1
2	PR-T809	Spring Tine- Right (Black)	1
3	For Reference Only	Left Wheel Set	1
4	PR-T504	Side Guard	1
5	PR-T505	Guard Fastener	1
6	PR-T506	Side Guard Fastener	1
7	BM1217540	Bolt- M12 x 1.75 x 40- 8.8- Galv	10
8	FW12	Flat Washer- M12- Galv	20
9	LM12175	Self-locking Nut- M12 x 1.75- Galv	10

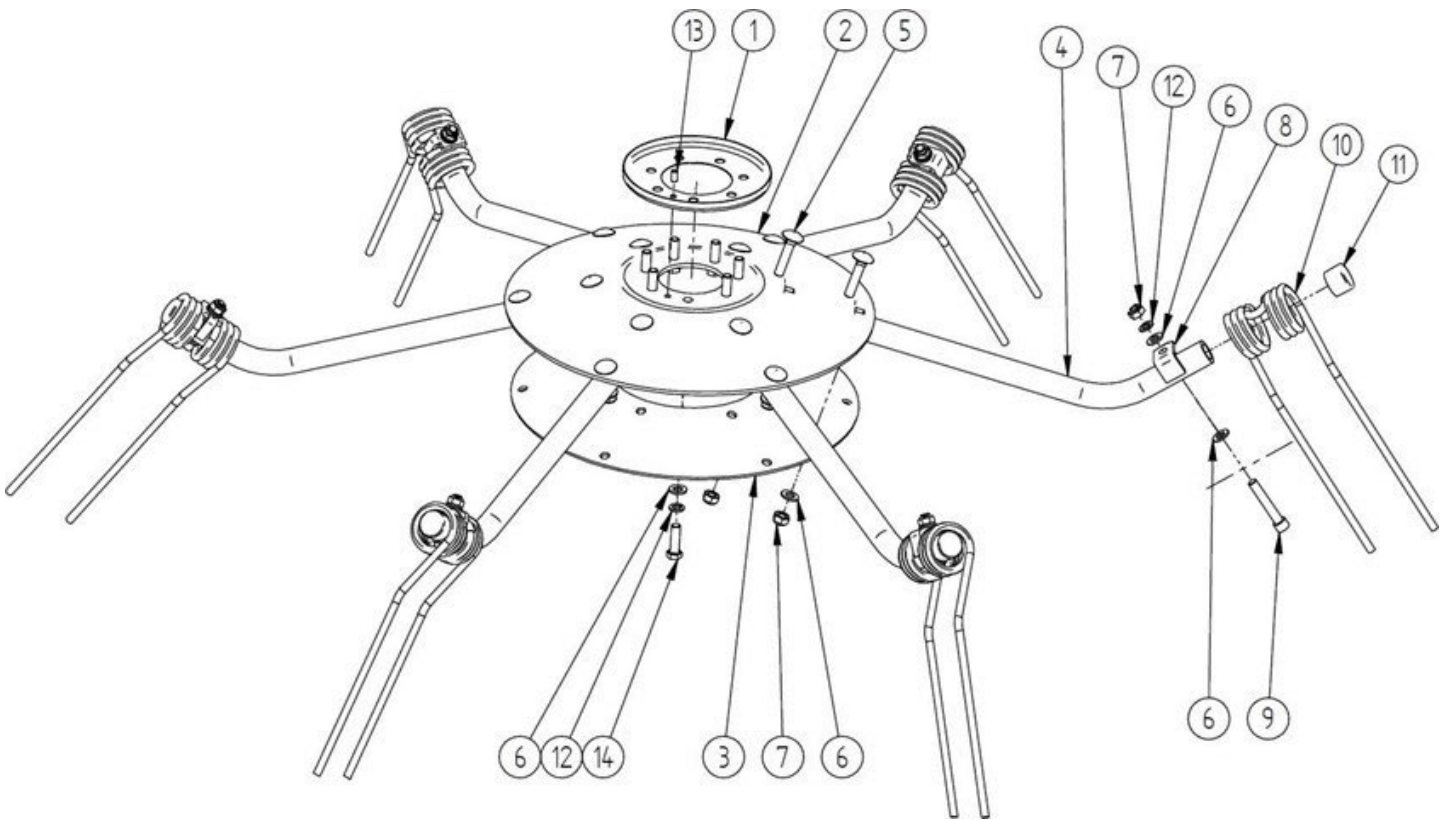
# Left Side Frame



## Left Side Frame

Item	Part #	Description	Qty.
1	PR-T601	Left Side Frame	1
2	PR-T216	Side Gear- TB-319 J	1
3	PR-T225	Wheel Pin	1
4	KM100863	Key- M10 x 8 x 63	1
5	BM12175140	Bolt- M12 x 1.75 x 140- 8.8- Galv	4
6	FW12	Flat Washer- M12- Galv	4
7	LW12	Lock Washer- M12-Galv	4
8	LFW10	Large Flat Washer M10-Galv	1
9	PR-T215	Rubber Bumper- M50 x 20	1
10	UCPA209	Self-adjusting Bearing- UCPA209	1
11	BM142040	Bolt- M14 x 2.0 x 40- 8.8- Galv	2
12	FW14	Flat Washer- M14- Galv	2
13	PR-T614	Lock Washer- M14- Galv	2
14	PR-T407	Shaft Support Sleeve	1
15	SRE-45	Snap Ring- M45 (External)	1
16	BM0812525	Shaft Distance Collar	2
17	ABM0817540	Allen Head Bolt- M8 x 1.75 x 40- 8.8- Galv	2
18	PR-T212	Bearing Guard	1
19	BM0812516	Bolt- M8 x 1.25 x 16- 8.8- Galv	6
20	FW08	Flat Washer- M8- Galv	6
21	PR-T221	Side Drive Shaft	1
22	PR-T202	Side Frame Closure Bolt	1
23	PR-T203	Actuator Closure Bolt Sleeve	2
24	FW20	Flat Washer- M20- Galv	1
25	SRE-20	Snap Ring- M20 (External)	1
26	PR-T220	Joint Guard Retainer	1

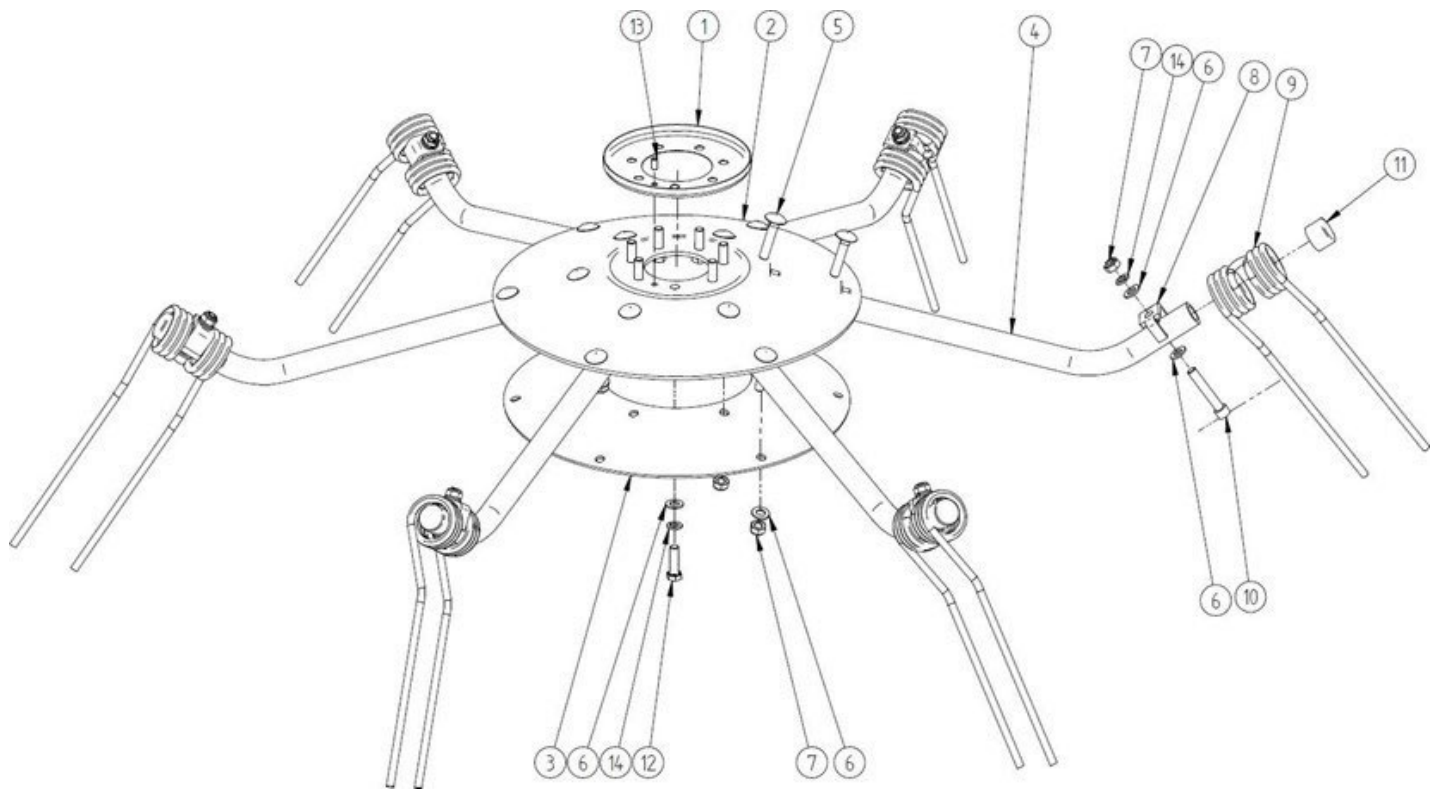
# Left Side Frame



## Left Side Frame

Item	Part #	Description	Qty.
1	PR-T701	Transmission Stopper	1
2	PR-T702	Rotor Upper Plate	1
3	PR-T703	Rotor Bottom Plate	1
4	PR-T704	Spring Tine Arm	6
5	CBM1217560	Carriage Bolt- M12 x 1.75 x 60- 8.8- Galv	12
6	FW12	Flat Washer- M12- Galv	31
7	LN12175	Self-locking Nut- M12 x 1.75- Galv	18
8	PR-T708	Tine Fastener	6
9	ABM1217570	Allen Head Bolt- M12 x 1.75 x 70- 12.9- Galv	6
10	PR-T710	Spring Tine, Left (Yellow)	6
11	PR-T309	Dust Cover 1"	6
12	LW12	Lock Washer-M12- Galv	13
13	PR-T713	Dowel pin, Hardened M8 x 16	1
14	BM1217540	Bolt- M12 x 1.75 x 40- 8.8- Galv	7

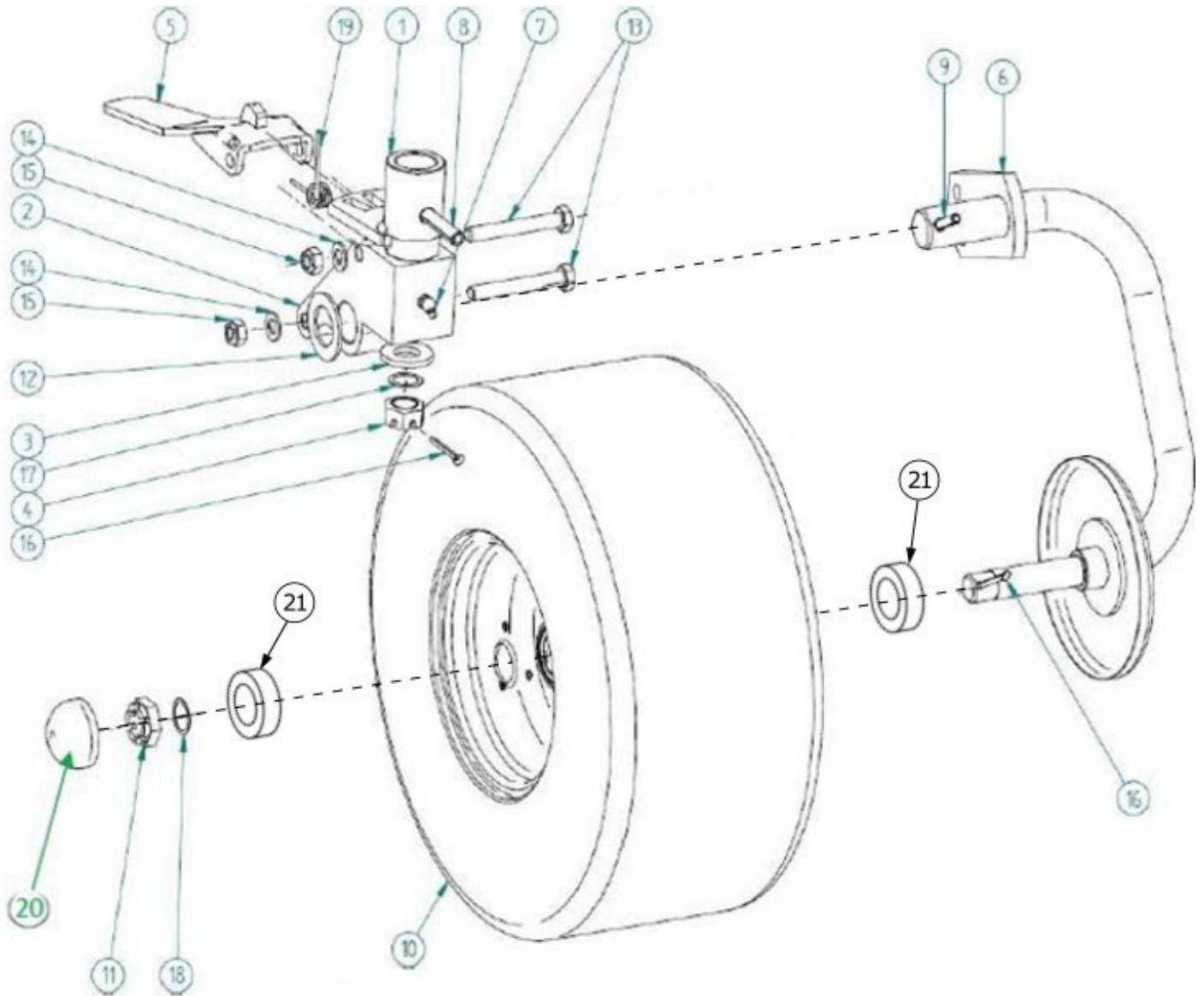
# Right Working Set



## Right Working Set

Item	Part #	Description	Qty.
1	PR-T701	Transmission Stopper	1
2	PR-T702	Rotor Upper Plate	1
3	PR-T703	Rotor Bottom Plate	1
4	PR-T704	Spring Tine Arm	6
5	CBM1217560	Carriage Bolt- M12 x 1.75 x 60- 8.8- Galv	12
6	FW12	Flat Washer- M12- Galv	31
7	LN12175	Self-locking Nut- M12 x 1.75- Galv	18
8	PR-T708	Tine Fastener	6
9	PR-T809	Spring Tine- Right (Black)	6
10	ABM1217570	Allen Head Bolt- M12 x 1.75 x 70- 12.9- Galv	6
11	PR-T309	Dust Cover- 1"	6
12	BM1217540	Bolt- M12 x 1.75 x 40- 8.8- Galv	7
13	PR-T713	Dowel pin- Hardened H6- M8 x 16	1
14	LW12	Lock Washer- M12- Galv	13

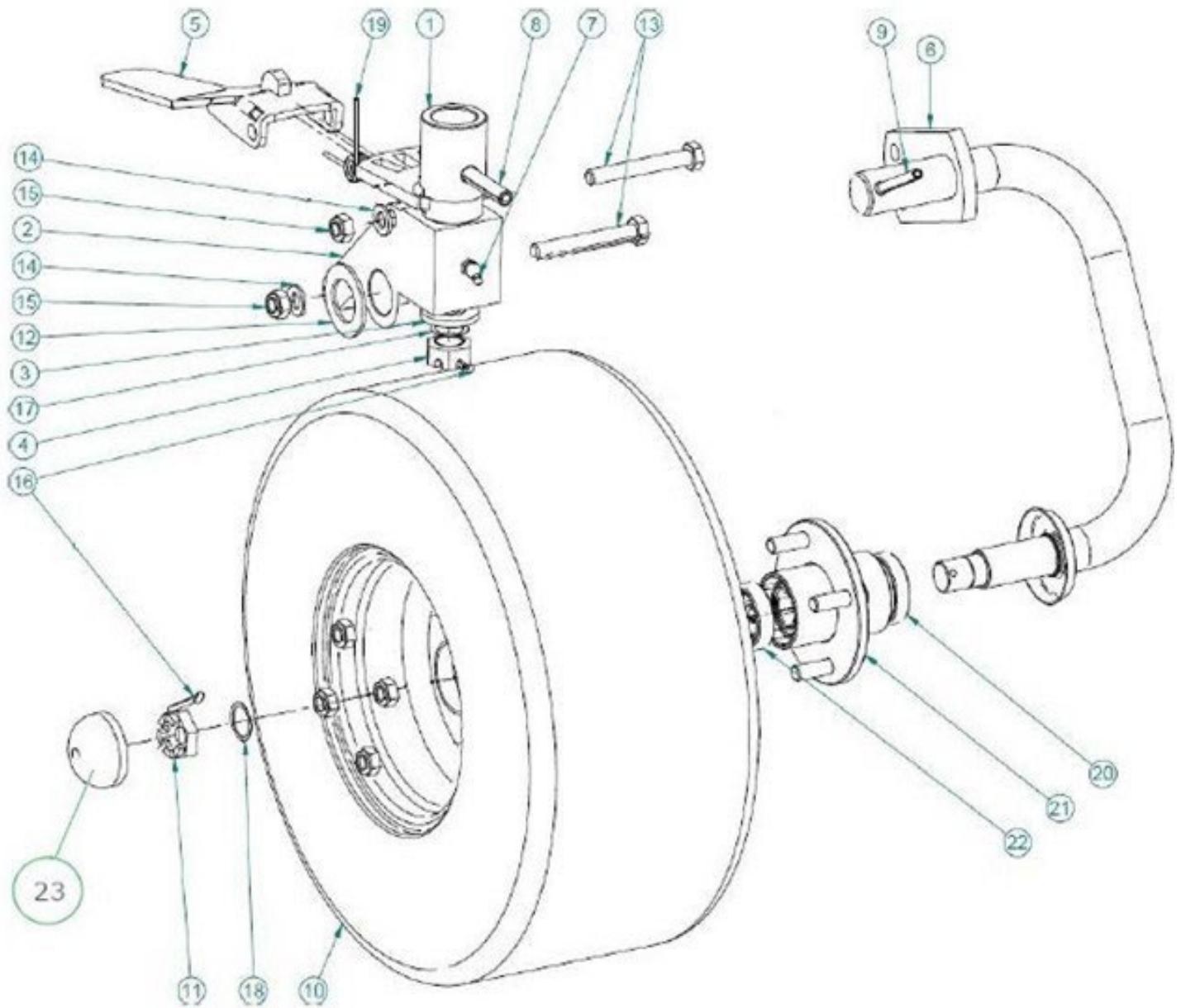
# Left Wheel Set



## Left Wheel Set

Item	Part #	Description	Qty.
1	PR-T901	Alignment Bushing	1
2	PR-T902	Wheel Axle Fastener	1
3	PR-T903	Wheel Bolt Washer	1
4	CNM221.5	Castle Nut- M22 x 1.5- Galv	1
5	PR-T905	Handle	1
6	PR-T906A	Wheel Axle- Outside- Left	1
7	GN101A	Grease Nipple- Angled- M10 x 1.0	1
8	PR-T908	Spring Pin- M12 x 60	1
9	PR-T909	Spring Pin- M8 x 60	1
10	PR-T910A	Wheel- AB 18x8,5-8 81B STARCO HIT TR13 Outside Wheels Only	1
11	CNM2415	Castle Nut- M24 x 1.5- Galv	1
12	PR-T912	Wheel Axle Washer	1
13	BM1217590	Bolt- M12 x 1.75 x 90- 8.8- Galv	1
14	FW12	Flat Washer- M12	2
15	LN12175	Self-locking Nut- M12 x 1.75-Galv	2
16	CP5x40	Cotter pin- M5 x 40	2
17	PR-T917	Spacer Washer- M22 (M0.3, M0.5)	1, as required
18	PR-T918	Spacer Washer- M25	1 or 2, asrequired
19	PR-T919	Handle Spring	1
20	PR-T920	Hub Cover for ground wheels	1
21	B6205 2RS	Bearing- 6205 2RS	2

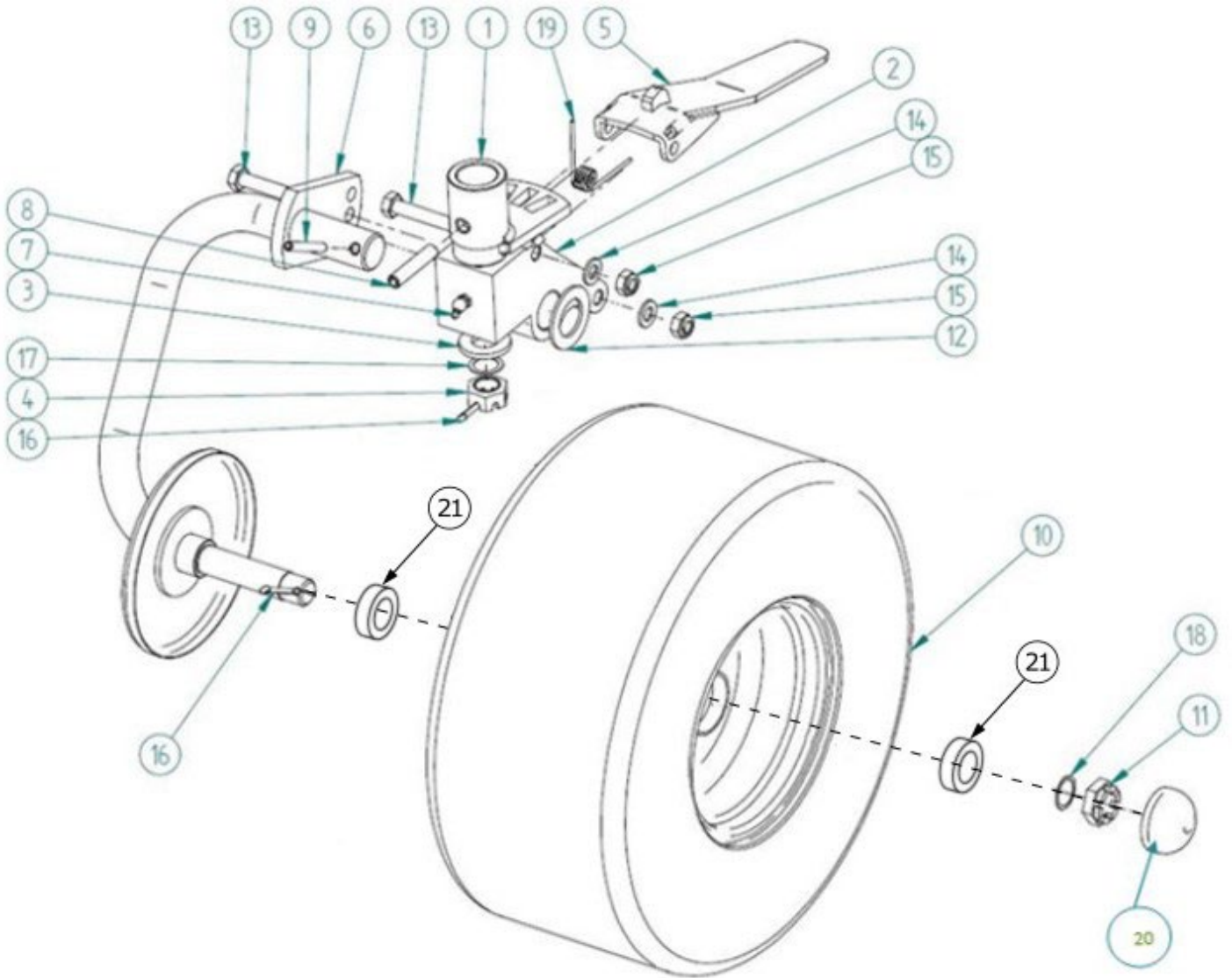
# Left Wheel Set - Transport Wheel



## Left Wheel Set - Transport Wheel

Item	Part #	Description	Qty.
1	PR-T901	Alignment Bushing	1
2	PR-T902	Wheel Axle Fastener	1
3	PR-T903	Wheel Bolt Washer	1
4	CNM2215	Castle Nut- M22 x 1.5 Galv	1
5	PR-T905	Handle	1
6	PR-T906B	Wheel Axle- Transport Type- Left	1
7	GN101A	Grease Nipple- M10 x 1- Angled	1
8	PR-T908	Spring Pin- M12 x 60	1
9	PR-T909	Spring Pin- M8 x 60	1
10	PR-T910B	Wheel- 18.5 x 8.50-8 78SM S-368 TR413	1
11	PR-T911	Castle Nut- M24 x 1.5 Galv	1
12	PR-T912	Wheel Axle Washer	1
13	BM1217590	Bolt- M12 x 1.75 x30- 8.8- Galv	1
14	FW12	Flat Washer- M12	2
15	LM12175	Self-locking Nut- M12 x 1.75 Galv	2
16	CP5x40	Cotter Pin- M5 x 40	2
17	PR-T917	Spacer Washer- M22 (0.3, 0.5)	1, as required
18	PR-T918	Spacer Washer- M25	1 or 2, asre- quired
19	PR-T919	Handle Spring	1
20	B60062RS	Bearing- 6006 2RS	1
21	PR-T1021	Wheel Hub- 4/100/130	1
22	B62052RS	Bearing- 6205 2RS	1
23	PR-T920	Hub Cover for Ground wheels	1

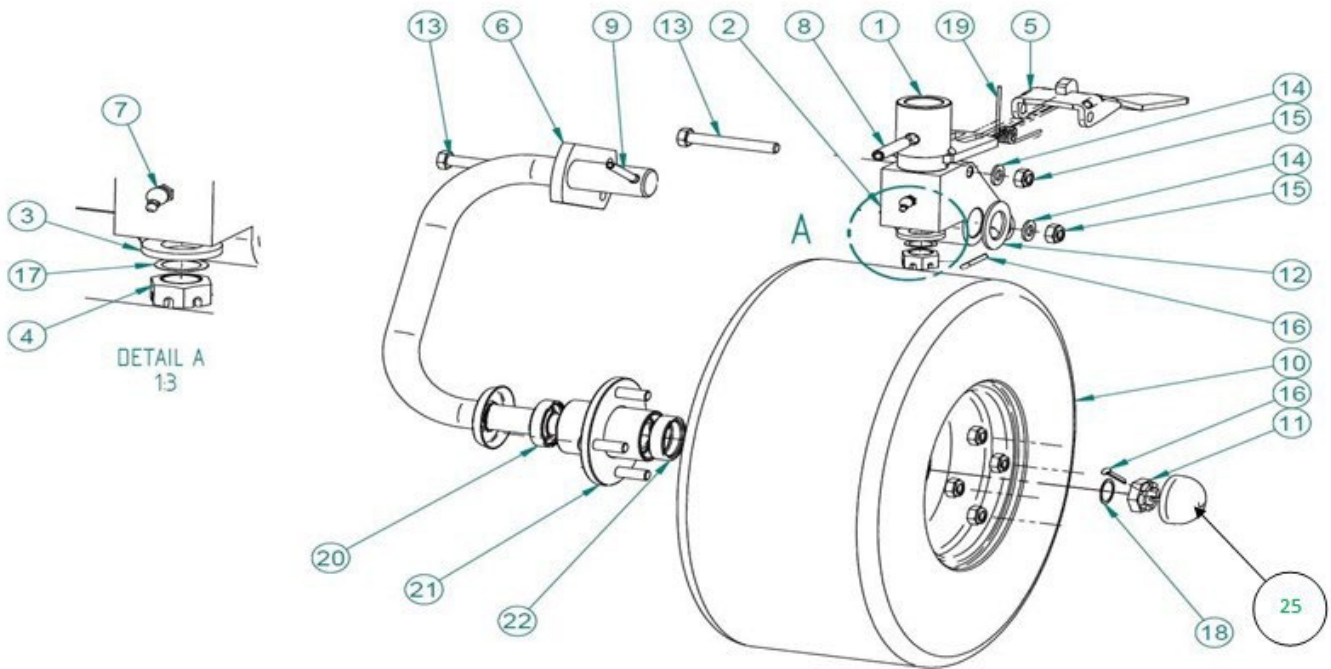
# Right Wheel Set



## Right Wheel Set

Item	Part #	Description	Qty.
1	PR-T901	Alignment Bushing	1
2	PR-T902	Wheel Axle Fastener	1
3	PR-T903	Wheel Bolt Washer	1
4	CNM2215	Carriage Bolt- M22 x 1.5 Galv	1
5	PR-T905	Handle	1
6	PR-T1006A	Wheel Axle- Outside- Right	1
7	GN101A	Grease Nipple- M10 x 1.0- Angled	1
8	PR-T908	Spring Pin- M12 x 60	1
9	PR-T909	Spring Pin- M8 x 60	1
10	PR-T910A	Wheel- AB 18x8,5-8 81B STARCO HIT TR13	1
11	CNM2415	Carriage Nut- M24 x 1.5 Galv	1
12	PR-T912	Wheel Axle Washer	1
13	BM1217590	Bolt- M12 x 1.75 x 90- 8.8- Galv	2
14	FW12	Flat Washer- M12 Galv	2
15	LMN12175	Self-locking Nut- M12 x 1.75 Galv	2
16	CP5x40	Cotter Pin- M5 x 40	2
17	PR-T917	Spacer Washer- M22 (0.3, 0.5)	1, as required
18	PR-T918	Lock Washer- M25	1 or 2, asrequired
19	PR-T919	Handle Spring	1
20	PR-T920	Hub Cover for Ground wheels	4
21	B6205 2RS	Bearing - 6205 2RS	2

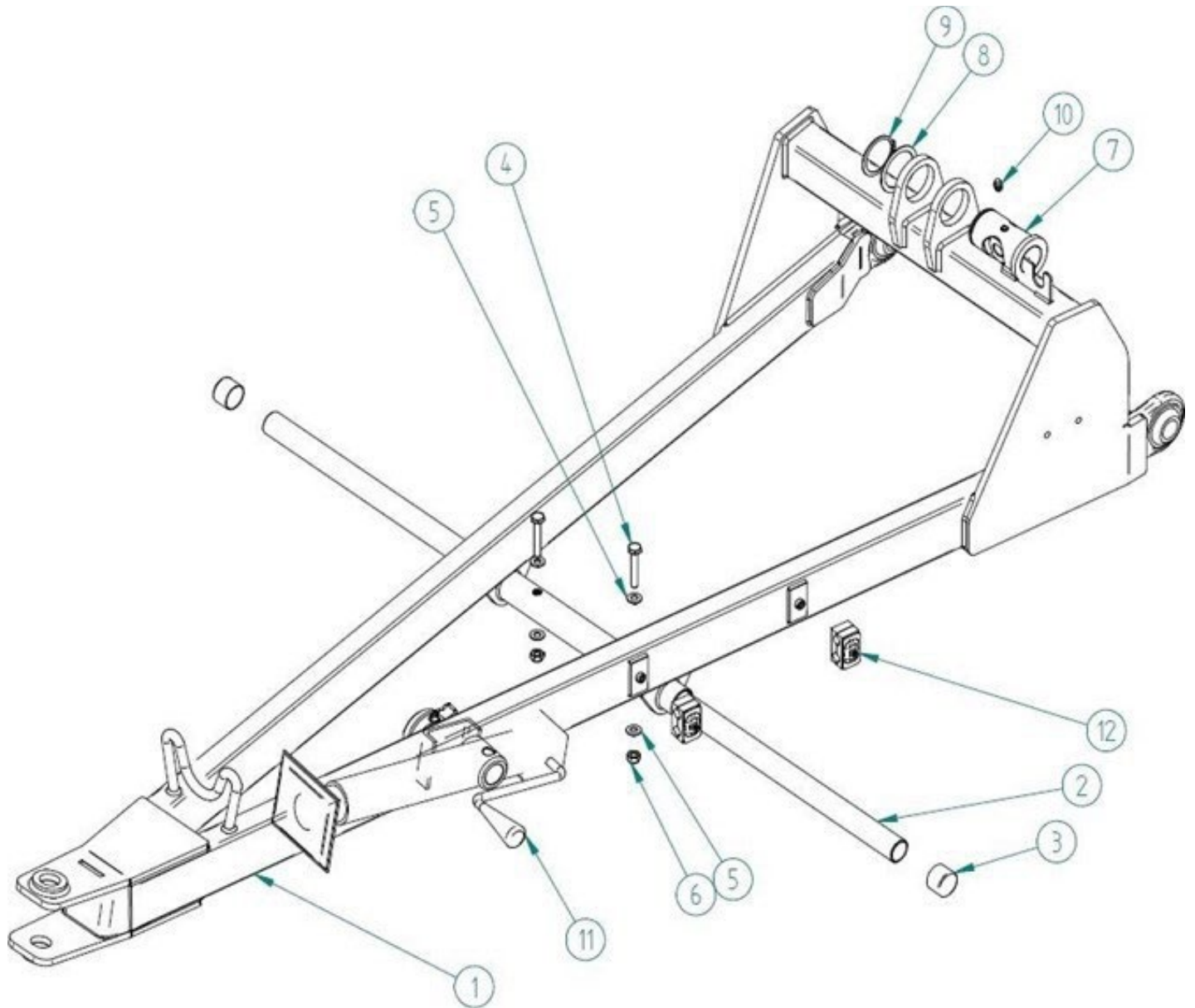
# Right Wheel Set - Transport Type



## Right Wheel Set - Transport Type

Item	Part #	Description	Qty.
1	PR-T901	Alignment Bushing	1
2	PR-T902	Wheel Axle Fastener	1
3	PR-T903	Wheel Bolt Washer	1
4	CNM2215	Carriage Nut- M22 x 1.5 Galv	1
5	PR-T905	Handle	1
6	PR-T1006B	Wheel Axle- Transport Type- Right	1
7	GN101A	Grease Nipple- M10 x 1.0- Angled	1
8	PR-T908	Spring Pin- M12 x 60	1
9	PR-T909	Spring Pin- M8 x 60	1
10	PR-T910B	Wheel- 18.5 x 8.50-8 78SM S-368 TR413	1
11	PR-T911	Carriage Nut- M24 x 1.5 Galv	1
12	PR-T912	Wheel Axle Washer	1
13	BM1217590	Bolt- M12 x 1.75 x 90- 8.8- Galv	2
14	FW12	Flat Washer- M12- Galv	2
15	LN12175	Self-locking Nut- M12 x 1.75- Galv	2
16	CP5x40	Cotter Pin- M5 x 40	2
17	PR-T917	Spacer Washer- M22 (0.3, 0.5)	1, as required
18	PR-T918	Spacer Washer- M25	1 or 2, as Req'd
19	PR-T919	Handle Spring	1
20	B60062RS	Bearing- 6006 2RS	1
21	PR-T1021	Wheel Hub- 4/100/130	1
22	B62052RS	Bearing- 6205 2RS	1
23	PR-T1023	Conversion Set- Change to Transport type(RIGHT)	1
24	PR-T1024	Conversion Set- Change to Transport type(LEFT)	1
25	PR-T920	Hub Cover for Ground wheels	1

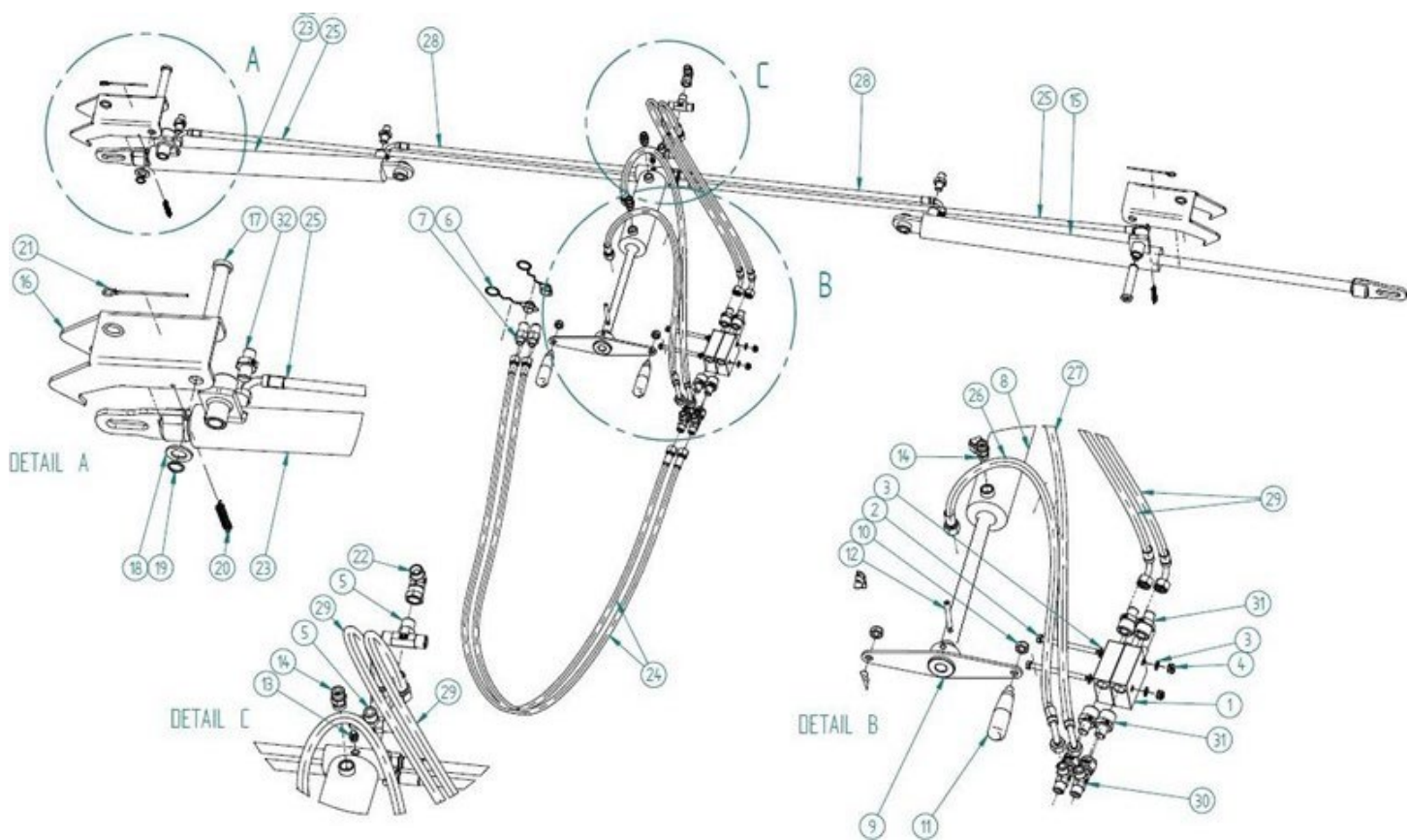
# Hitch



## Hitch

<b>Item</b>	<b>Part #</b>	<b>Description</b>	<b>Qty.</b>
1	PR-T1301	Hitch American Version	1
2	PR-T1302	Straight Guard	1
3	PR-T711	Dust Cap- 1"	2
4	BM101560	Bolt- M10 x 1.5 x 60- 8.8- Galv	2
5	FW10	Flat Washer- M10- Galv	4
6	LN1015	Self-locking Nut- M10 x 1.5 Galv	2
7	PR-T1307	Hitch Actuator	1
8	PR-T1308	Actuator Sleeve Washer	1
9	SRE-55	Snap Ring- M55 (External)	1
10	GN101S	Grease Nipple- M10 x 1.0 Straight	1
11	PR-T1311	Support Foot- LT2103 50x430 SIMOL	1
12	PR-T443	Hose Fastener- DN8	2

# Hydraulic System



## Hitch

Item	Part #	Description	Qty.
1	PR-T1201	Sequence Valve- VS2C 1 2	2
2	PR-T1202	Bolt- Half Thread- M8 x 1.25 x 100- 8.8 - Galv	2
3	FW08	Flat Washer- M8- Galv	4
4	LNMO8125	Self-locking Nut- M8 x 1.25	2
5	PR-T1205	T-pipe- M18 x 1.5	2
6	PR-T1206	Quick release coupling stopper, Europlug	2
7	PR-T1207	Hydraulic quick release coupling Europlug	2
8	PR-T1208	Hitch actuator	1
9	PR-T1209	Hitch actuator knob	1
10	LNMI2175	Self-locking Nut- M12 x 1.75	2
11	PR-T1211	Rotary handle	2
12	PR-T1212	Spring Pin- M8 x 60	1
13	GN101S	Grease Nipple- Straight- M10 x 1.0	1
14	PR-T1214	Straight Coupler- M18 x 1.5	2
15	PR-T1215	Frame Cylinder- Left Side	1
16	PR-T1216	Cylinder Closer Latch	2
17	PR-T1217	Cylinder Pin	2
18	FW20	Flat Washer- M20- Galv	2
19	SRE-20	Snap Ring- M20 (External)	2
20	PR-T1220	Latch Spring	2
21	PR-T1221	Line- M8 x 4.5	2
22	PR-T1222	Female Union- AB M18 x 1.5 12L/12L	1
23	PR-T1223	Frame Cylinder- Right	1
24	PR-T1224	Hose- P51/P51 M18x1,5 1SC DN8 L-3000	2
25	PR-T1225	Hose- P51/P52 M18x1,5 1SC DN8 L-1300	2
26	PR-T1226	Hose- P52/P52 M18x1,5 1SC DN8 L-570	1
27	PR-T1227	Hose- P52/P52 M18x1,5 1SC DN8 L-630	1
28	PR-T1228	Hose- P51/P52 M18x1,5 1SC DN8 L-750	2
29	PR-T1229	Hose- P51/P52 M18x1,5 1SC DN8 L-950	2
30	PR-T1230	T-pipe- BBA M18 x 1.5 12L	2
31	PR-T1231	Connector- 1.2- M18 x 1.5 12L	4
32	PR-T1232	Connector- 3.8- M18 x 1.5 12L	4

## Warranty

---

### LIMITED WARRANTY

Belco Resources Equipment warrants to the original purchaser of any new piece of machinery from Belco Resources Equipment, purchased from an authorized Belco Resources Equipment dealer, that the equipment be free from defects in material and workmanship for a period of one (1) year for non-commercial, state, and municipalities' use, ninety (90) days for commercial use from date of retail sale. Warranty for rental purposes is thirty (30) days. The obligation of Belco Resources Equipment to the purchaser under this warranty is limited to the repair or replacement of defective parts.

Replacement or repair parts installed in the equipment covered by this limited warranty are warranted for ninety (90) days from the date of purchase of such part or to the expiration of the applicable new equipment warranty period, whichever occurs later. Warranted parts shall be provided at no cost to the user at an authorized Belco Resources Equipment dealer during regular working hours. Belco Resources Equipment reserves the right to inspect any equipment or parts, which are claimed to have been defective in material or workmanship.

This limited warranty does not apply to and excludes wear items such as shear pins, tires, tubes knives, blades or other wear items. Oil or grease is not covered by this warranty.

All obligations of Belco Resources Equipment under this limited warranty shall be terminated if:

- Proper service is not performed on the machine.

- The machine is modified or altered in any way.

- The machine is being used or has been used for purposes other than those for which the machine was intended.

### DISCLAIMER OF IMPLIED WARRANTIES & CONSEQUENTIAL DAMAGES

Belco Resources Equipment obligation under this limited warranty, to the extent allowed by law, is in lieu of all warranties, implied or expressed, including implied warranties of merchantability and fitness for a particular purpose and any liability for incidental and consequential damages with respect to the sale or use of the items warranted. Such incidental and consequential damages shall include but not be limited to: transportation charges other than normal freight charges; cost of installation other than cost approved by Belco Resources Equipment; duty; taxes; charges for normal service or adjustment; loss of crops or any other loss of income; rental of substitute equipment, expenses due to loss, damage, detention or delay in the delivery.

### REGISTRATION

The online Warranty Registration must be completed in order to qualify for coverage on this Limited Warranty. Visit [br-equipment.com](http://br-equipment.com), click on "Warranty Registration" and completely fill out the form to register the new piece of equipment.

**Page left blank intentionally**

**Page left blank intentionally**



401 Jeffreys Road  
Rocky Mount, NC 27804  
[www.tarrivermfg.com](http://www.tarrivermfg.com)

Tel: 252-822-7140  
Fax: 252-787-5855  
[Sales@tarrivermfg.com](mailto:Sales@tarrivermfg.com)