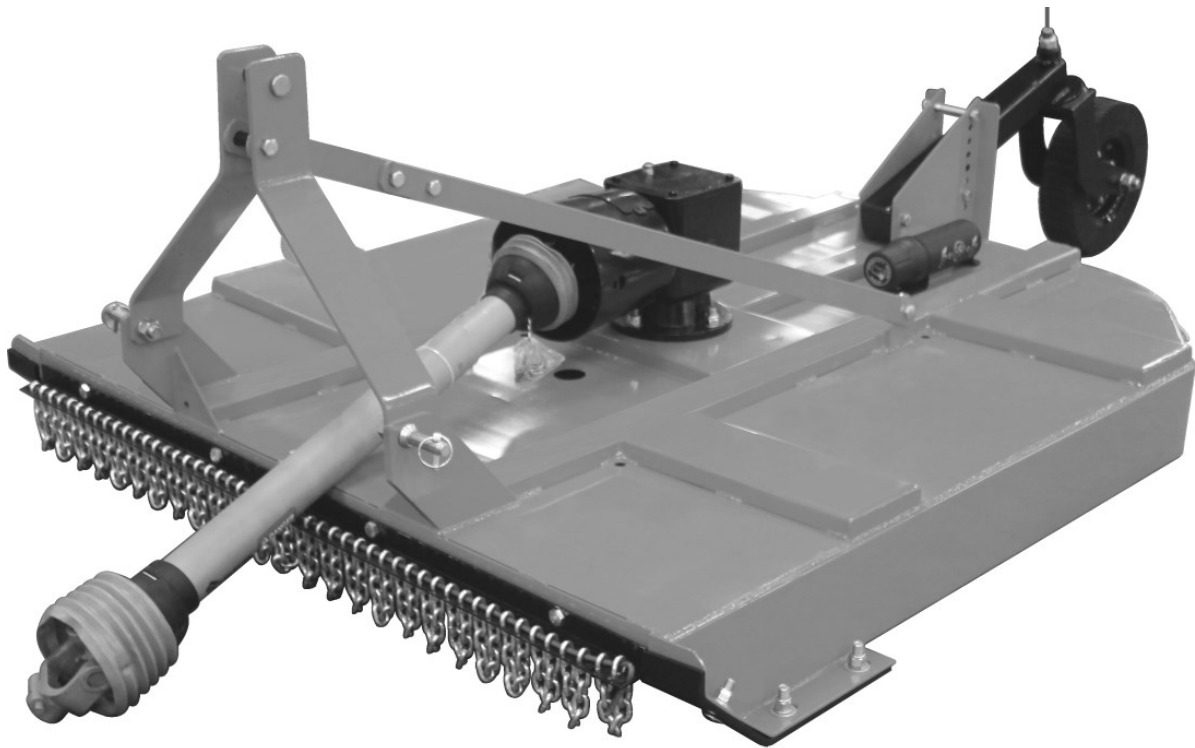




Rotary Cutter

MRC - HRC



Operator's Manual

Rev. 07/24

Page left blank intentionally

TO THE DEALER:

Assembly and proper installation of this product is the responsibility of the Tar River dealer. Read manual instructions and safety rules. Make sure all items on the Dealer's Pre-Delivery and Delivery Check Lists in the Owner's/Operator's Manual are completed before releasing equipment to the owner.

TO THE OWNER:

Read this manual before operating your Tar River equipment. The information presented will prepare you to do a better and safer job. Keep this manual handy for ready reference. Require all operators to read this manual carefully and become acquainted with all the adjustment and operating procedures before attempting to operate. Replacement manuals can be obtained from your selling dealer. The equipment you have purchased has been carefully engineered and manufactured to provide dependable and satisfactory use. Like all mechanical products, it will require cleaning and upkeep. Lubricate the unit as specified. Observe all safety information in this manual and safety decals on the equipment. For service, your authorized Tar River dealer has trained mechanics, genuine Tar River service parts, and the necessary tools and equipment to handle all your needs. Use only genuine Tar River service parts. Substitute parts will void the warranty and may not meet standards required for safe and satisfactory operation.

Record your implement model and serial number in the space provide below. Your dealer will need this information to give you prompt, efficient service.

Model Number: _____

Serial Number: _____

Date Purchased: _____

Table of Contents

Introduction	5
Technical Specifications	5
Safety	6
Safety Signal Words	6
General Safety Guidelines	7
Safety Decal Care	7
Before Operation	8
During Operation	9
Highway And Transport Operations	10-11
Introduction.....	12-28
Attaching to Tractor.....	29
PTO Driveline Instructions.....	30-34
Maintenance & Lubrication	35-38
Adjustments	39
Torque Specifications	40
Parts Breakdown	41-52
Warranty	53

Technical Specifications

Thank you for purchasing your Tar River Implements Rotary Cutter. The MRC and HRC Rotary Cutters have front & rear chains standard, are built for 40-90 HP tractors and have a 5 Year Gearbox Warranty. Both models come with slip-clutch PTOs and have a cut capacity of 2”.

Technical Specifications

- 90 HP gearbox
- 2” Cutting capacity
- Laminated wheels & re-greaseable hubs
- Solid stump jumper
- 7” Sides MRC-6, 8” Sides HRC-7
- Deck thickness 3mm MRC-6, 5mm HRC-7
- Replaceable skids
- Safety chain shields standard
- Hitch MRC-6 Cat. 1, HRC-7 Cat. 2
- MRC-6 single tailwheel, HRC-7 double tailwheel

Model:	MRC-6	HRC-7
Weight	725 lbs.	1,375 lbs.
Req. HP	40 - 90 HP	50 - 90 HP
Working width	72”	84”
Cat. hitch	Cat. 1	Cat. 2
Tail wheel	1	2

Important Safety Information

Safety

It is important that you read the entire manual and to become familiar with this product before you begin using it. This product is designed for certain applications only. The manufacturer cannot be responsible for issues arising from modification. We strongly recommend this product not be modified and /or used for any application other than that for which it is designed. If you have any questions relative to a particular application, DO NOT use the product until you have first contacted us to determine if it can or should be performed on the product.

Read and understand this manual and all safety signs before operating and maintaining . Review the safety instructions and precautions annually.

Safety Signal Words

TAKE NOTE! This safety alert symbol found though out this manual is used to call you attention to instructions involving you personal safety and the safety of others. Failure to follow these instructions can result in injury or death.



**This symbol means:
Attention!
Become alert!
Your safety is involved!**

Note the use of the signal words, **DANGER, WARNING and CAUTION** with the safety messages. The appropriate signal word for each has been selected using the following guidelines:



DANGER: Indicates an imminently hazardous situation that, if not avoided, will result in death or serious injury. This signal word is to be limited to the most extreme situations typically for machine components which, for functional purposes, cannot be guarded.



WARNING: Indicates a potentially hazardous situation that, if not avoided, could result in death or serious injury, and includes hazards that are exposed when guards are removed. It may also be used to alert against unsafe practices.



CAUTION: Indicates a potentially hazardous situation that, if not avoided, may result in minor or moderate injury. It may also be used to alert against unsafe practices.

Important Safety Information

General Safety Guidelines

Safety of the operator is one of the main concerns in designing and developing a new piece of equipment. Designers and manufacturers build in as many safety features as possible. However, every year many accidents occur which could have been avoided by a few seconds of thought and a more careful approach to handling equipment. You, the operator, can avoid many accidents by observing the following precautions in this section. To avoid personal injury, study the following precautions and insist those working with you, or for you, follow them.

Replace any **DANGER, WARNING, CAUTION** or instruction safety decal that is not readable or is missing. Location of such decals are indicated in this manual. Do not attempt to operate this equipment under the influence of drugs or alcohol.

Review the safety instructions with all users annually.

This equipment is dangerous to children and persons unfamiliar with its operation. The operator should be a responsible adult familiar with farm machinery and trained in this equipment's operations. **Do not allow persons to operate or assemble this unit until they have read this manual and have developed a thorough understanding of the safety precautions and of how it works.**

To prevent injury of death, use a tractor equipped with a Roll Over Protection System (ROPS). Do not paint over, remove or deface any signs or warning decals on your equipment. Observe all safety signs and practice the instructions on them.

Never exceed the limits of a piece of machinery. If its ability to do a job, or to do so safely, is in question - **Don't try it!**



Safety Decal Care

- Keep safety signs clean and legible at all times.
- Replace safety signs that are missing or have become illegible.
- Replaced parts that displayed a safety sign should also display the current safety sign
- Safety signs are available from your Distributor or Dealer Parts Department or the factory.

Important Safety Information

How to Install Safety Signs

- Be sure that the installation area is clean and dry.
- Decide on the exact position before you remove the backing paper.
- Remove the smallest portion of the split backing paper.
- Align the decal over the specified area and carefully press the small portion with the exposed sticky backing in place.
- Slowly peel back the remaining paper and carefully smooth the remaining portion of the decal in place.
- Small air pockets can be pierced with a straight pin and smoothed out using the piece of decal backing paper.



Before Operation

- Carefully study and understand this manual.
- Do not wear loose-fitting clothing, which may catch in moving parts.
- Always wear protective clothing and substantial shoes.
- Assure that all tires are inflated evenly.
- Give the machine a visual inspection for any loose bolts, worn parts or cracked welds, and make necessary repairs. Follow the maintenance safety instructions included with this manual.
- Be sure that there are no tools lying on or in the equipment.
- Do not use the machine until you are sure that the area is clear, especially of children and animals.
- Don't hurry the learning process or take the machine for granted. Ease into it and become familiar with your new equipment.
- Practice operation of your equipment and its attachments. Completely familiarize yourself and other operators with its operation before using.
- Use a tractor equipped with a Roll Over Protection System (ROPS) and fasten your seat belt prior to starting engine.
- The manufacturer does not recommend usage of tractor with ROPS removed.
- Move tractor wheels to the widest recommended settings to increase stability.
- Securely attach to towing unit. Use a high strength, appropriately sized hitch pin with a mechanical retainer and attach safety chain.
- Do not allow anyone to stand between the tongue or hitch and the towing vehicle when backing up to the equipment.

Important Safety Information



During Operation

- Children should not be allowed on the product.
- Clear the area of small children and bystanders before moving the machine.
- If using a towing unit, securely attach machine by using a hardened 3/4" pin, a metal retainer, and safety chains if required. Shift towing unit to a lower gear before going down steep downgrades, thus using the engine as a retarding force. Keep towing vehicle in gear at all times. Slow down for corners and rough terrain.
- Make sure you are in compliance with all local and state regulations regarding transporting equipment on public roads and highways. Lights and slow moving signs must be clean and visible by overtaking or oncoming traffic when machine is transported.
- Beware of bystanders, **particularly children!** Always look around to make sure that it is safe to start the engine of the towing vehicle or move the machine. This is particularly important with higher noise levels and quiet cabs, as you may not hear people shouting.
- **NO PASSENGERS ALLOWED!** Do not carry passengers anywhere on, or in, the tractor or equipment, except as required for operation.
- Keep hands and clothing clear of moving parts.
- Do not clean, lubricate or adjust your equipment while it is moving.
- When halting operation, even periodically, set the tractor or towing vehicle brakes, disengage the PTO, shut off the engine and **remove the ignition key.**
- Be especially observant of the operating area and terrain. Watch for holes, rocks or hidden hazards. Always inspect the area prior to operation.
- **DO NOT** operate near the edge of drop-offs or banks.
- **DO NOT** operate on steep slopes as overturns may result.
- Operate up and down (not across) intermediate slopes. Avoid sudden starts and stops.



Warning: Never backup with the machine on the ground! This will cause damage to the machine. Always lift the machine high enough to clear the ground before backing up.

Important Safety Information



Highway and Transport Operations

- Adopt safe driving practices.
- Keep the brake pedals latched together at all times. **Never use independent braking with machine in tow as loss of control and/or upset of machine can result.**
- Always drive at a safe speed relative to local conditions and ensure that your speed is low enough for an emergency stop to be safe and secure. Keep speed at a minimum.
- Reduce speed prior to turns to avoid the risk of overturning.
- Avoid sudden uphill turns on steep slopes.
- Always keep the tractor or towing vehicle in gear to provide engine braking when going downhill. Do not coast.
- Do not drink and drive!
- Comply with state and local laws governing highway safety and movement of farm machinery on public roads.
- Use approved accessory lighting flags and necessary warning devices to protect operators of other vehicles on the highway during daylight and nighttime transport. Various safety lights and devices are available from your dealer.
- The use of flashing amber lights is acceptable in most localities. However, some localities prohibit their use. Local laws should be checked for all highway and marking requirements.
- When driving the tractor and equipment on the road or highway under 40 kph (20 mph) at night or during the day, use the amber warning lights and a slow moving vehicle (SMV) identification emblem.
- Plan your route to avoid heavy traffic.
- Be a safe and courteous driver. Always yield to oncoming traffic in all situations, including narrow bridges, intersections, etc.
- Be observant of bridge loading ratings. Do not cross bridges rated at lower than the gross weight at which you are operating.
- Watch for obstructions overhead and to the side while transporting.
- Always operate in a position to provide maximum visibility at all times. Make allowances for increased length and weight of the equipment when making turns, stopping the machine, etc.
- Pick the most level route when transporting across fields. Avoid the edges of ditches or gullies and steep hillsides.
- Be extra careful when working in inclines.

Important Safety Information



Highway and Transport Operations

- Maneuver the tractor or towing vehicle at safe speeds.
- Avoid overhead wires or other obstacles. Contact with overhead lines could cause serious injury or death.
- Avoid loose fill, rocks and holes, they can be dangerous for equipment operation or movement.
- Allow for machine length when making turns,
- Operate the towing vehicle from the operator's seat only.
- Never stand alongside of machine with engine running or attempt to start engine and/or operate machine while standing alongside of machine.
- Never leave running equipment attachments unattended.
- As a precaution, always recheck the hardware on equipment following every 100 hours of operation. Correct all problems. Follow the maintenance safety procedures.

Introduction

ROTARY CUTTER

The rotary cutter is the most versatile method of grass cutting. It is powerful enough to cope with tall weeds and small bushes, yet giving a satisfactory fine cut on turf areas mounted with optional front and rear rollers, scalping is minimal. Tractor-mounted rotary cutter, grass cutter provides a very cost-effective grass cutting solution. The rotary cutter is one of the best machines in itself for cutting unwanted wild grass.

FEATURES

Designed for fast application to any type of 40-90 HP tractors with three point linkage.

Safety chain shield standard.

Tractor driven suitable for P.T.O. 540 R.P.M.

Rotary Cutter and grass cutting having steel blades for cutting wild grass, shrubs, weeds & etc.

Cutting width: approx. 6 & 7 feet

Height adjustment: 2"~8" (50 ~ 200 mm)

Using This Manual

It is important that you thoroughly read and understand this manual before operation of the machine. You should also familiarize yourself with all aspects of operation, maintenance, trouble shooting and first and foremost safety.

Machine Description

The cutting is a power take off (PTO) driven rotary machine designed to be attached to a tractor. The cutting blades are driven via one gearbox mounted to the cutter body.

The Purpose

This machine is designed and manufactured solely for the purpose of cutting grass and cover crops. Under no circumstances should it be used for any other purpose.

Introduction

The Application and Limitations

The cutter's main application is the cutting of grass and cover crops on roadsides, ovals and paddocks. It is not recommended that it be used during wet or slippery conditions, or during poor visibility.

Safety Training

- Safety is a primary concern in the design and manufacture of our product. Unfortunately, our efforts to provide safe equipment can be wiped out by a single careless act of an operator or bystander.
- In addition to the design and configuration of equipment, hazard control and accident prevention are dependent upon the awareness, concern, precaution and proper training of persons involved in the operation, transport, maintenance and storage of this equipment.
- It has been said, "The best safety device is an informed, careful operator." We ask you to be that kind of operator. It is the operator's responsibility to read and understand all safety and operating instructions in the manual and to follow them. Accidents can be avoided.
- Working with unfamiliar equipment can lead to careless injuries. Read this manual and the manual for your tractor, before assembly or operating, to acquaint yourself with the machines. If this machine is used by any person other than you, or is loaned or rented, it is the rotary mower owner's responsibility to make certain that owner's manual be available to the operator prior to operating:
 - Reads and understands the operator's manuals.
 - Is instructed in safe and proper use.
 - Know your controls and how to stop tractor, engine, and the mower quickly in an emergency. Read this manual and the one provided with your tractor.
- Train all new persons and review instructions frequently with existing workers. Be certain only a properly trained and physically able person will operate the machinery. A person who has not read and understood all operating and safety instructions is not qualified to operate the machine. An untrained operator exposes himself and bystanders to possible serious injury or death. If the elderly are assisting with farm work, their physical limitations need to be recognized and accommodated.

WARRANTY

- When the implement is delivered, check that it has not been subjected to damage during transport and that the accessories are in a perfect condition and complete.
- Any claims following the receipt of damaged goods shall be presented in writing within 8 days from the receipt of the goods.
- The purchaser may only make the claims under warranty. When he has complied with the warranty conditions in the supply contract.

Introduction

WHEN THE WARRANTY BECOMES VOID

Besides the cases specified in the supply agreement, the warrantee shall in any case become void:

When the implement has been used beyond the specified power limit like (Tractor Horse Power)










When repairs made by the customer without authorization from the manufacturer or owing to installation of spurious spare parts, the machine is subjected to variations and the damage can be ascribed to these variations.

When the user has failed to comply with the instructions in this handbook.

No warranty will be given if the service and greasing is not done on time.

USAGE INSTRUCTIONS

Before Using The Machine / Implement For The First Time !

-  **READ THE INSTRUCTION BOOK THOROUGHLY** before attempting to operate or carry out any maintenance on the machine. If you do not understand any part of this manual, ask your dealer for assistance.
-  **ALWAYS CARRY OUT SAFE MAINTENANCE.** Never clean, adjust or maintain the machine until the engine has been stopped, the machine come to rest, the PTO disengaged and the key removed.
-  **NEVER WORK UNDER A MACHINE RAISED ON THE 3-POINT LINKAGE** unless it is securely supported.
-  **NEVER OPERATE THE MACHINE WITH ANY PARTS OR GUARDS MISSING.** Check that all guards including the PTO shaft guards are in good condition and in place before operating the machine.
-  **OPERATE SAFELY.** Before starting work, check that there are no persons or animals in the immediate vicinity of the machine or tractor. Always maintain full control of the tractor and machine. Ensure that you know how to stop the tractor and machine quickly in case of emergency.
-  **SECURE THE PTO GUARD BY MEANS OF CHECK CHAINS** to suitable points on the tractor and machine to prevent the outer plastic shield from rotating.
-  **NEVER STAND BETWEEN THE MACHINE/IMPLEMENT AND THE TRACTOR WHEELS.**
-  **DO NOT WEAR LOOSE OR RAGGED CLOTHING**
-  **BEWARE OF DUST.** Under dusty conditions, keep the cab windows an

Introduction

BEWARE OF HIGH NOISE LEVELS. Some tractor/implement combinations give noise levels in excess of 90dB at the operator's ear. Under such circumstances, ear defenders should be worn. Keep cab windows and doors closed to reduce noise level. Throughout this handbook, the term 'tractor' is used to refer to the power source used to drive them machine. It does not necessarily refer to a conventional agricultural tractor.

Setup Instructions

Connecting to tractor and setting up adjustments

1. Locate the cutter on a flat, level surface.
2. Determine the category pin size to suit the tractor: Cat. 1 : Bottom link 7/8" top link 3/4" & Cat. 2 : Bottom link 11/8" top link 1"
3. Carefully reverse the tractor and line up the lower link pins.
4. Engage the park brake, shut off the tractor and remove key before dismounting the tractor.
5. Fit the correct size pins and secure with lynch pins.
6. Adjust the top link so that it fits between tractor and cutter. Slotted top link will enable 60mm of float to reduce skids ploughing.
7. Adjust the sway bars/chains to hold the cutter central to the tractor and prevent the cutter from swinging sideways.
8. To fit the Power Take Off (PTO) shaft to the cutter and tractor, press the quick disconnect pin and simultaneously slide the female spline onto the male spline until the pin engages.
9. Check that the locks are securely engaged after coupling.
10. Start the tractor and slowly engage the tractor's hydraulic 3 point linkage to lift the cutter.
11. Check for sufficient draw bar clearance and adjust as required.
12. Watch the telescoping movement of the shaft to ensure that it does not bottom out while lifting the 3 point linkage. If it does, refer to the link adjustment.
13. Raise the cutter to check that the PTO shaft does not contact the front of the cutter. Lock out the hydraulic lift so the lift cannot touch the shaft.
14. Measure the distance between the tractor PTO shaft and the clutch input shaft. The overall length of the PTO drive shaft should be approximately 50 mm less than the distance between the tractor PTO and the clutch shaft when the PTO is in the closed position, but still must be checked when fitted, to ensure the shaft does not bottom out and has an adequate amount of shaft insertion when in the extended position.
15. Fit the Power Take Off shaft to the cutter. Secure the other end to the tractor shaft, making sure the clips are secure in the shaft grooves.

Introduction

16. Raise the cutter to make sure the drive shaft does not foul on the front body. If it appears to come close to touching, raise the cutter to give a safe clearance and lock the linkage stop to prevent it fouling.
17. Never raise the cutter higher than necessary when turning or moving from one area to another.
18. Always lower the cutter gently to the ground, adjusting the drop rate on tractor hydraulics if necessary.

Cutters with skids

Adjust the top link to bring the front of the cutter skids clear of the ground by approximately 15mm.

Slashers with roller or wheels at rear

Adjust the top link to the cutting height required. The adjustment on the roller or wheels may be used to lever the slasher if desired.

Running & Operation Instructions

- Always disengage the tractor's PTO before lifting the slasher to transport position.
- When raising the cutter to the transport position check that the driveshaft does not contact the tractor or cutter, refer back to setup instructions if contact occurs.
- Leave enough clearance so the cutter does not come into contact with obstacle or ground.
- Limit transportation speed to 12 mph (20Km/h). When traveling on roadways do so in a manner that allows faster vehicles to pass safely. Be sure to reduce tractor speed when turning.
- In addition to design, accident prevention and hazard control are dependent on awareness, concentration, correct training and an attentive operator. Before beginning to cut, the following inspection checklist should be performed.

Instructions for Operation

- Lower the cutter down on a clear, level area to check the set up.
- Set the hand brake on and set the tractor gears to neutral.
- Select the correct Power Take Off (PTO) speed and set the tractor rpm to just above idle.

Introduction

- Slowly engage the PTO, do not use full throttle. The cutter is equipped with swing back blades to reduce loads if the cutter strikes an obstacle. Allow 10 seconds for the blades to align themselves and when the cutter is running smoothly, increase the PTO speed to the required speed.
- Ground speed is determined by three things.
 - The density of the material being cut.
 - The difficulty of the terrain.
 - The size of the tractor.
- Never run the cutter through material at speeds that will cause the tractor to overload.
- When cutting on sloping surfaces, operate at a reduced speed to ensure that the risk of loss of control or tractor rollover is minimized.
- It is important to retain the correct PTO speed (540 rpm unless specified) less of PTO speed will allow blades to hinge back and may result in an uneven or ragged cut.
- Slow down when changing direction or coming in and out of rows. If necessary turn off PTO and lift unit to stop dragging while turning.
- These instructions are a guide only and should be read in conjunction with the tractor manual and with safety instructions given by qualified training instructors.

Service Instruction

General

- It is dangerous to use the PTO drive shaft without guard and the restraining members correctly attached. A drive shaft guard restraining system is required in most areas. If you are unsure, check local regulations.
- Do not expose guarded parts of the shaft by cutting or enlarging the grease access holes.
- Do not step on or over a drive shaft.
- PTO drive shafts and (safety) clutches have to match the power take off of the machine type. See the instructions with your machine for recommended type and size of shaft and clutches. Overloading can cause damage.
- Do not operate above recommended speeds.
- It is against regulations to connect clutches to the tractor PTO in most areas. If you are unsure, check local regulations.
- No device (e.g. adaptors) shall be installed between the tractor PTO and the PTO drive shaft.

Introduction

- No changes except length adjustment may be made to the PTO drive shaft.
- Do not operate without all drive line guards, tractor and equipment shield in place. Drive lines must be securely attached at both ends and drive line guards must turn freely on drive line.

Restraining Members

- A drive shaft guard restraining system is required in most areas. If a chain is the method of restraining the shaft guard, the following must be taken into account.
- Chains must be securely attached to the master shield of the tractor and the guard on the implement, in order to prevent the guard from rotating. Be careful to allow sufficient movement of the shaft in all working positions.
- Damaged chains need to be replaced immediately. Never use the chain to support the PTO drive shaft. If the PTO shaft is uncoupled from the tractor PTO, or self propelled machine, always connect the shaft to the support point of the implement.

Installation Procedure

Tractor Requirements

Ensure the specifications of the tractor meet the requirements listed below:

- 6 spline PTO of 1-3/8" diameter
- PTO output of 540 rev/min.
- Category I & II, 3 point linkage

Preparing the Tractor

Remove any brackets or objects which may obstruct operation of lift arms.

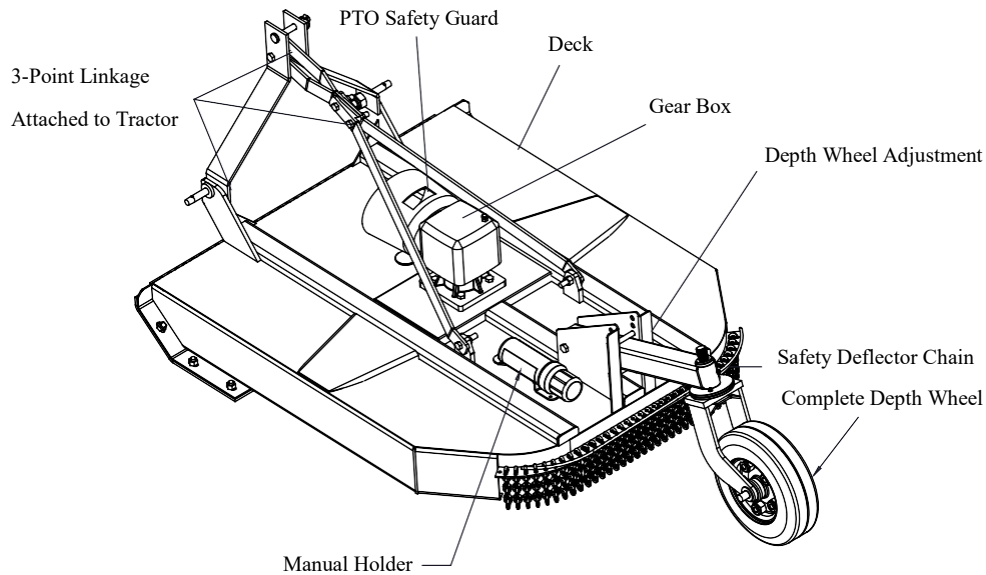
Disengage PTO drive and expose PTO drive shaft.

Preparing the Machine

The machine will normally be delivered fully assembled.

For export markets the rotary cutter may require minor assembly to change from the machines transport state to the machine working state.

Introduction



Rotary Cutter



PTO Shaft With Slip Clutch

- Unbolt the wheel beam from the two transport brackets securing the wheel beam to the deck.
- Assemble the wheel beam in its working position on the deck by fastening bolt to bracket on the deck.
- Fasten nut and bolt into wheel beam assembly location.
- Unfasten cable ties holding lower links arms in place, positions and secure lower links in place using lower link pins in positions.
- Ensure all fasteners are securely tightened. The machine is then in its working position.

Introduction

FITTING MACHINE/IMPLEMENT TO TRACTOR

To fit the machine to the tractor the following instructions must be adhered to:

- Disengage PTO drive.
- Reverse tractor squarely to the machine.
- Gradually reverse tractor until lift arm Holes are level with mounting pins.
- Fit left lift arm into mounting pin.
- Adjust height of right lift arm if necessary.
- Fit right arm on to the mounting pin then lock with lynch pin.
- Fit top stay of machine to top link on Tractor , adjusting the length with the machine level on the skids
- Secure with pins provided with tractor.
- Adjust lift arm check chains to prevent machine from swaying when raised.

FITTING PTO

Due to many different makes and sizes of tractor to which the Rotary Cutter can be fitted, a nominal length of PTO shaft is supplied with the machines. In some cases it may be found that this PTO shaft is too long and will have to be shortened.

IMPORTANT

MINIMUM ENGAGEMENT OF PTO SQUARE DRIVE IS 100MM (4IN) AND 150MM (6IN) FOR THE LEMON TUBE TYPE IN WORKING POSITION THIS MEASUREMENT MUST BE TAKEN INTO ACCOUNT WHEN SHORTENING THE PTO SHAFT.

- Remove burrs.
- Before fitting PTO shaft to tractor, grease the sliding drive shafts and bearing units.
- Fit PTO to tractor ensuring locking peg on the splined coupling in fully engaged.
- Attach PTO guard check chains to tractor and machine.
- Both machinery and tractor must be parallel to one another.

ADJUSTMENTS CLUTCH SETTING

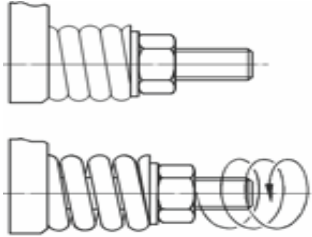
The friction plate clutch is to be set such that it will not slip in normal working conditions, but will slip should any significant obstacle be struck. The initial clutch setting given is a guide only and may need to be varied, depending on local conditions. NOTE: DURING INITIAL USE, CHECK CLUTCH REGULARLY FOR OVERHEATING OF THE CLUTCH. The clutch will 'bed in' and require re-setting after a short period of use. Failure to do this may result in excessive wear of the clutch components - see UNDER-TIGHTENING.

Introduction

UNDER-TIGHTENING of the clutch springs will cause unnecessary slippage of the clutch which will result in excessive wear of plates and eventually complete failure of clutch components due to overheating. In normal obstacle free operation the clutch should be no hotter than the gearbox. If the clutch overheats, increase clutch spring compression by 1/4 turn on each nut and re- check clutch temperature after a short period of work and re-adjust if necessary. [Note: In light conditions it may be necessary to continue working for 15-30 minutes to determine if clutch setting is suitable, however in heavy conditions 25 meters of distance should be sufficient work to check clutch setting. WARNING - Do not over-tighten clutch.

OVER-TIGHTENING of the clutch springs will not allow the clutch to function correctly, possibly resulting in torque induced shear failure of drive line components, should an obstacle be encountered.

INITIAL CLUTCH SETTING

	<p>Tighten nuts to coil bind springs then back off nuts as shown below.</p> <p>If clutch overheats in normal operation tighten each nut 1/4 turn and re-check after further work. Re-adjust if necessary.</p>
<p>NOTE: Failures of UNIVERSAL DRIVE-SHAFT, CLUTCH, or GEARBOX that are attributable to incorrect clutch setting, are not covered by warranty.</p>	

ADJUSTING CLUTCH SETTING TO SUIT WORKING CONDITIONS

The recommended procedure to 'fine tune' the clutch setting to suit the tractor and working conditions is as follows:

1. Set the clutch to the recommended initial setting – err on the low side.
2. Work the rotary cutter in normal to heavy conditions for 10 – 20 meters.
3. Shut down tractor and wait until the PTO stops turning, then get off tractor and check the clutch temperature.
4. If it is heating up due to slippage, tighten adjusting nuts 1/4 turn.
5. Repeat steps 1-4 until no further heating occurs.

Introduction

SEIZURE of the clutch can be caused by rusting of the steel clutch plate facings due to atmospheric moisture and/or rain. Seizure of the clutch may cause it to function incorrectly, possibly resulting in torque induced shear failure of drive line components, should an obstacle be struck. To prevent this occurring it is necessary to periodically 'free the clutch' and ensure that it slips, then reset it. To 'free the clutch' follow steps below:

1. Slacken off the clutch springs until compression in springs is almost nil.
2. Connect the cutter to the tractor and engage the PTO drive and ensure clutch spins freely (does not drive the blade beam). This will also polish any rust from clutch plate facings. **WARNING!** Refer to **SAFETY PRECAUTIONS** in relation to performing this maintenance work.
3. If the clutch will not disengage it may be necessary to remove it from the rotary cutter and clean or repair as required.
4. Reset clutch.

CUTTING HEIGHT – When close to persons or traffic it is strongly recommended the ROTARY CUTTER is adjusted to 100mm minimum cut height.

If working within 300m of persons or passing traffic (in particular, this includes maintenance of vacant suburban blocks and roadsides) be aware that debris buried within the grass can be picked up and thrown. Debris such as lengths of steel (pipe, posts or star pickets) or lengths of timber can become lethal projectiles. The recommended minimum cut height in these areas is 100mm (nominal cut height on flat ground.) The higher cut height will lower the possibility of the blades scapling and throwing debris, however prior to beginning work, a thorough inspection of the whole area to be cut is strongly recommended.

Vacant suburban blocks can be particularly dangerous due to the following:

- They are often a dumping ground for rubbish (debris).
- They are often left uncut for long periods, then an extremely low cut is requested to avoid more frequent maintenance.
- They are typically subject to both passing traffic and nearby persons (neighbours or passing pedestrians).
- Complete and rigorous checking of the whole area to be cut is time consuming and even then may not reveal dumped debris, especially if it is partially buried.

Introduction

CUTTING HEIGHT – BLADE CLEARANCE

Adjust the rotary cutter depth wheel and tractor three-point linkage so that the required cutting height is achieved. The following 2 points should however be considered:

FORWARD CUTTING: For predominantly forward cutting the blades should cut 1-2 cm lower at the front of the rotary cutter than the rear. This will prevent blades back cutting, reduce blade wear and 'dust' and lower the power required.

FORWARD & REAR CUTTING: It is advisable to adjust the linkage and cutter so that the blade is cutting horizontally.

CUTTING HEIGHT – ADJUSTMENT WHEN USING WHEELS:

On level ground adjust the rotary cutter height control wheels and tractor lower linkage arms to give the required cutting height taking into account points i & ii above. Then extend the three-point linkage top link such that there is sufficient slack in the rotary cutter chain backstays to allow the rotary cutter to follow the ground contours. Adjust the skids to give suitable clearance between the underside of the skid and the ground. (Typical clearances are: front - 5-7mm, rear - 10 mm. Excessive clearances will allow potentially dangerous ejection of material from under the rotary cutter.)

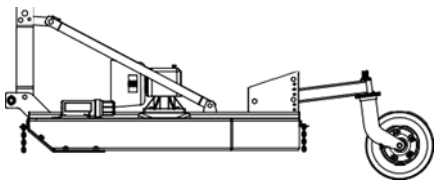


Fig. 1

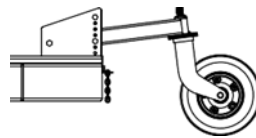


Fig. 2

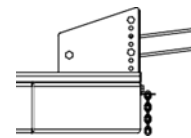


Fig. 3

SAFETY & EQUIPMENT SAFETY GUIDELINE HEALTH AND SAFETY AT WORK!

Our equipment is designed so as to conform to current Health & Safety Regulations and therefore poses no significant hazard to health when properly used. Nevertheless, in the interests of all concerned, it is essential that equipment of our manufacture is used in accordance with the instructions that are supplied or are available from our Technical Staff.

Legislation requires that all operators are instructed in the safe operation, cleaning and maintenance of equipment and machines. This handbook forms part of that instruction and it must be read and understood before fitting the machine onto the tractor or attempting to use it.

Your supplier is responsible for carrying out any necessary pre-delivery inspection, fitting the machine onto the tractor and test running. The supplier must also give instruction in the safe use, maintenance, and adjustment of the machine.

In the interests of safety, please ensure that the instructions referred to above are brought to the attention of all your employees who are to use the equipment. We recommend that the use of this equipment is restricted to capable trained operatives. Persons under the age of sixteen should not operate the machine and should be kept away from where it is being used.

Introduction

Sequence of Job steps	Potential Hazard of each step	Standard Operating Procedure	Personal Protective Equipment
Special note.	WARNING	No persons are to use this equipment prior to; Reading and understanding the operators manual. Reading the standard operating procedure. Undergoing thorough practical training while properly supervised.	CAUTION
Pre-start maintenance checks.	<i>Flying machine parts Severe bodily injury.</i>	Ensure the cutter is checked prior to use and is in good working condition .	<i>Overalls safety Boots, gloves.</i>
Special note.	<i>Flying debris.</i>	Where the tractor being used does not have an enclosed cab or other protective material should be fitted to stop flying debris hitting the operator.	
Start up machine.	<i>Flying machine parts Severe bodily injury.</i>	As an added safety precaution, when visual assessment of the machine has been completed, perform a test run prior to commencing field operations. Engage the PTO and check the cutter from the tractor cab If all ok, disengage PTO prior to travelling to the job site.	<i>Eye protection, Overalls High visibility, Safety Vest, Safety boots.</i>
Travelling to job site.	<i>Accident, Damage off course, Tip over, Risk of being crushed.</i>	Ensure the cutter is at maximum height when travelling at road speed as the CUTTER could strike the road or other objects and cause the tractor to damage off course. Periodically check that the cutter is still at maximum height.	<i>Eye protection, Overalls High visibility, Safety Vest, Safety boots.</i>
Commence slashing operation.	Flying debris, Eye injury, Bodily injury, Tip over, Risk of being crushed, Cuts, Hearing damage.	Clear the entire area of any people before commencing slashing. Survey the area to be slashed. Check the slope of the land, if applicable. Clear the area to be slashed of any obvious hazards, e.g. large stones, large Branches (twigs) from trees, wire etc. Select the correct height adjustment for the cutter for the task at hand. If wire or other objects become caught in the blades, apply the brakes to tractor and switch off the Engine. When the cutter is lifted to remove objects from the blade, it must be supported by safety stands or the equivalent.	<i>Eye protection, Overalls High visibility, Safety Vest, Safety boots, Gloves, Hearing protection.</i>
Special note.		Thoroughly check the cutter every 2 hours, tractor gear must be in neutral, the Engine switched off and PTO disengaged.	
Finish cutting operation.	<i>Accident. Damage off course. Tip over. Risk of being crushed.</i>	When returning to the storage shed, ensure the cutter is at maximum height When travelling at road speed as the cutter could strike the road or other objects causing the tractor to Damage off course. Periodically check that the cutter is still at maximum height.	<i>Eye protection, Overalls High visibility, Safety Vest, Safety Boots.</i>
Clean up.	<i>Cuts and Damages, Burns, Slipping.</i>	Thoroughly check the equipment for any damage. Report any equipment damage to the manager. Place safety tag (danger- do not operate) on the equipment until repaired, indicating faults on tag. Once the equipment is repair, tag is not to be removed or equipment operated until sanctioned by appointed safety officer and/or manager. On completion of repairs and service, clean the cutter thoroughly (with high pressure cleaner if available), ensuring proper care is taken and the correct protective clothing/equipment is being worn.	<i>Eye protection, Face shield, Overalls, Safety, Boots, Gloves.</i>

Introduction

WARNING

A warning designates a degree or level of hazard seriousness. The warning are indicates a potentially hazardous situation which, if not avoided, could result in death or serious injury, and includes hazards that are exposed when guards are removed. It may also be used to alert against unsafe practices. Indicates a potentially hazardous situation which, if not avoided, may result in minor or moderate injury. It may also be used to alert against unsafe practices.

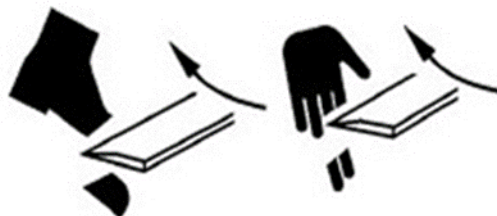
Carefully follow the instructions given on the Symbols.

- Driveline Missing - Ensure PTO guard is fitted to the machine before operating.
- Read Instructions - Always fully read and understand the instructions before using the machine.
- Keep Nuts Tight - Ensure all nuts are tight before commencing work with the machine.
- Keep Out Zone - Keep at a safe distance from the machine to avoid being crushed.
- Unsupported Machine - Do not attempt to get underneath the machine because of the risk of fall.
- Thrown Debris - Keep at a safety distance from the machine to avoid the risk of debris being thrown from the machine.
- Rotary Head Danger - Remove the ignition key and read the instructions before working on or getting close to the machine, as the blades may still be rotating.
- Shaft Entanglement - Keep at a safe distance from the machine to avoid being caught in guarding, rotor shaft, or the PTO shaft.
- Unblock Rotary Blade – Ensure rotary Blade has come to a complete stop before attempting to unblock these blades.
- Max PTO Speed 540 ACW – PTO speed not to exceed 540 RPM anti- clockwise.
- Safety of the operator and by standers is one of the main concerns in designing and developing a cutter However, every year accidents occur which could have been avoided by a few seconds of thought and a more careful approach to handling equipment. You, the operator, can avoid many accidents by adopting the following precautions and insist those working with you, or for you, follow them.
- In order to provide a better view, certain photographs or illustrations in this manual may show an assembly with a safety shield removed. However, equipment should never be operated in this condition. Keep all shields in place. If shield removal becomes necessary for repairs, replace the shield prior to use.
- Replace any safety sign that is not readable or is missing. Copies of such safety signs is shown in this manual.

Introduction

Carefully follow the instructions given on the Symbols.

- Driveline Missing - Ensure PTO guard is fitted to the machine before operating.
- Never use alcoholic beverages or drugs that can hinder alertness or coordination while operating this equipment. Consult your doctor about operating this machine while taking prescribed medications.
- Under no circumstances should children under the age of 18 be allowed to work with this equipment. Do not allow persons to operate or assemble this unit until they have read this manual and have developed a thorough understanding of the safety precautions and of how it works. Review the safety instructions with all users annually.
- This equipment is dangerous to children and persons unfamiliar with its operation. The operator should be a responsible, properly trained and physically able person familiar with farm machinery and trained in this equipment's operations. If the elderly are assisting with farm work, their physical limitations need to be recognized and accommodated.
- Use a tractor equipped with a Roll over Protective System and seat belts. (ROPS)
- Never exceed the limits of a piece of machinery. If its ability to do a job, or to do so safely, is in question- DON'T TRY IT.
- Do not modify the equipment in any way. Unauthorized modification could result in serious injury or death of operator or may impair the function and life of the equipment.
- In addition to the design and the configuration of this implement, including safety signs and safety equipment, hazard control and accident prevention are dependent upon the awareness, concern, precaution, and proper training of persons involved in the operation, transport, maintenance and storage of the machine. Also Refer to safety messages and operating instruction in each of the appropriate sections of the tractor and rotary cutter manuals. pay close attention to the safety signs affixed to the tractor and the rotary cutter
- NEVER place hands or feet under the rotary cutter, or Endeavour to make any repairs or adjustments, while the blades are rotating; this equipment is capable of inflicting serious injury.
- NEVER touch the blades or attempt to free any obstacle jammed by the blade beam while the tractor engine is running. The clutch may be slipping and removal of any obstruction may allow the blades to suddenly begin rotating with serious injuries being a very real possibility. Ensure that the engine has been shut off, the PTO disengaged, the tractor key removed and blades are not rotating.



Introduction

PRE-OPERATIONAL SAFETY CHECKS

- Operate only with roll over protection structure (ROPS) and seatbelt equipped tractors.
- Ensure that all guards are fitted, secure and functional.
- Ensure that the 3-point linkage, PTO shaft and safety chains are in sound condition.
- Ensure that the blades and fasteners are in sound condition.
- Ensure that hydraulic rams, hoses and couplings of tractor are in sound condition.
- Ensure that the rotary cutter is attached according to manufacturer's specification.
- Faulty equipment must not be used. Report suspect machinery immediately.

OPERATIONAL SAFETY CHECKS

- Keep clear of moving machine parts.
- Allow no passengers on tractor or rotary cutter.
- Do not use the rotary cutter with bystanders in the area.
- Be sure the transmission is out of gear and the PTO should be disengaged before starting the engine.
- Allow moving parts on the rotary cutter to stop before repair.
- Securely support the mower before working underneath. Chock the tractor wheels.
- Lock up raised lever (where fitted) before transport.
- Do not operate with raised levers (where fitted in raised or transport position).
- Before dismounting the tractor, lower the rotary cutter to the ground and allow moving parts to stop.
- Stop engine and set the brake.
- Remove key of unattended equipment.

SAFETY SIGN/SYMBOLS & LOCATION

Safety symbols are located on various points of the machine. They can be identified by the yellow upper panel depicting the hazard, and the lower white panel indication means of avoidance or precautions to be taken. These Symbols have no text. It is essential that all operators and persons associated with the machine fully understand their meanings, which are shown below. Any safety Symbols which are found missing should be replaced. Carefully follow the instructions given on the Symbols.

Introduction

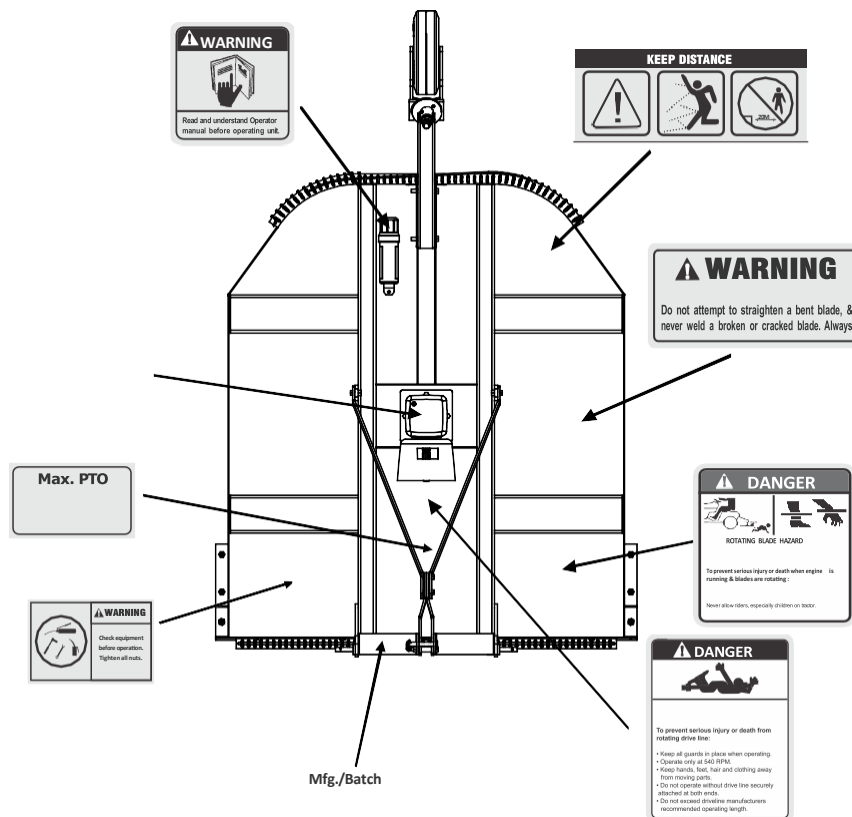
Look for the Safety Alert Symbol

The SAFETY ALERT SYMBOL indicates there is a potential hazard to personal safety involved and extra safety precaution must be taken. When you see this symbol, be alert and carefully read the message that follows it. In addition to design and configuration of equipment, hazard control and accident prevention are dependent upon the awareness, concern, precaution and proper training of persons involved in the operation, transport, maintenance and storage of equipment.

Be Aware of Signal Words

A Signal word designates a degree or level of hazard seriousness. The signal words are:

- WARNING**: Indicates an imminently hazardous situation which, if not avoided, will result in death or serious injury. This signal word is limited to the most extreme situations, typically for machine components that, for functional purposes, cannot be guarded.



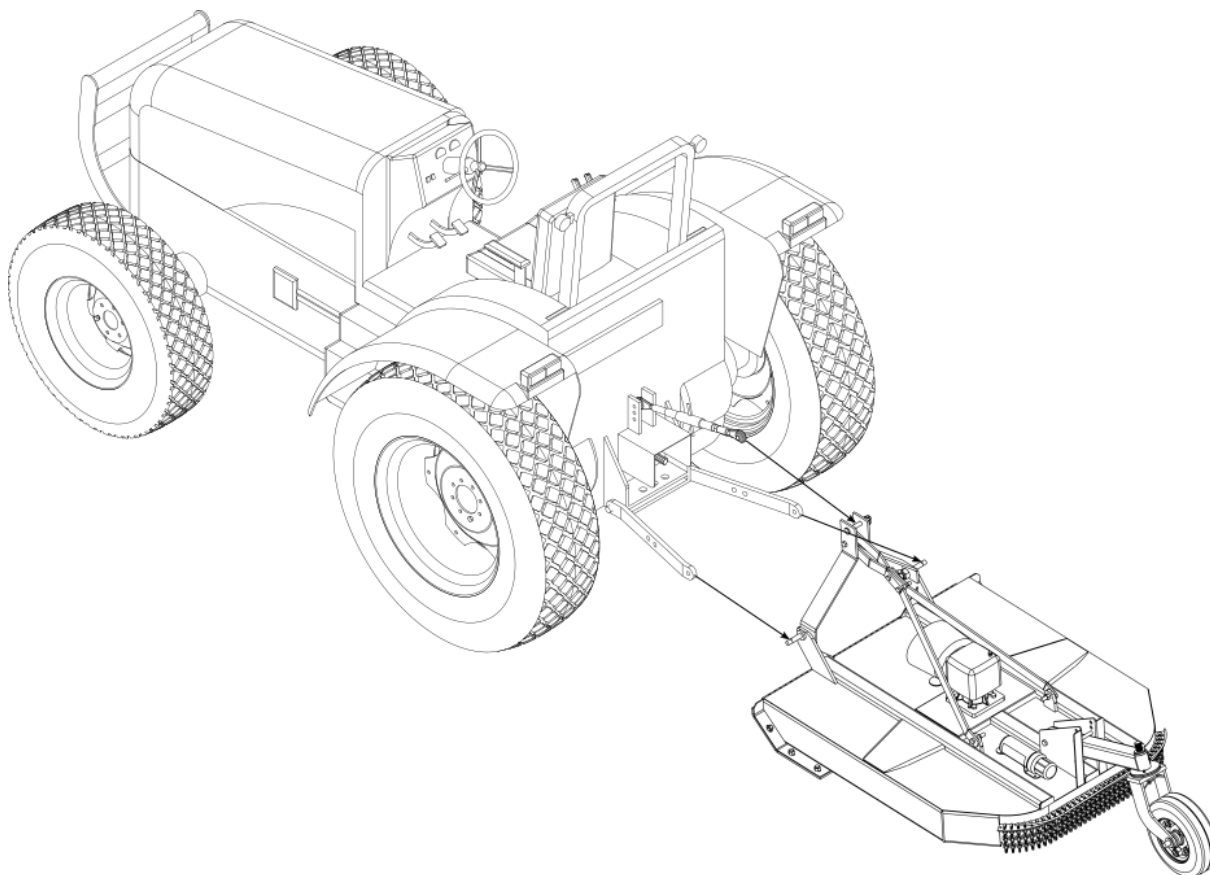
Attaching to Tractor



Warning: When attaching the Rotary Cutter, *Never* allow anyone to stand between the Rotary Cutter and the tractor. Serious injury or death can occur!

Attaching the Rotary Cutter

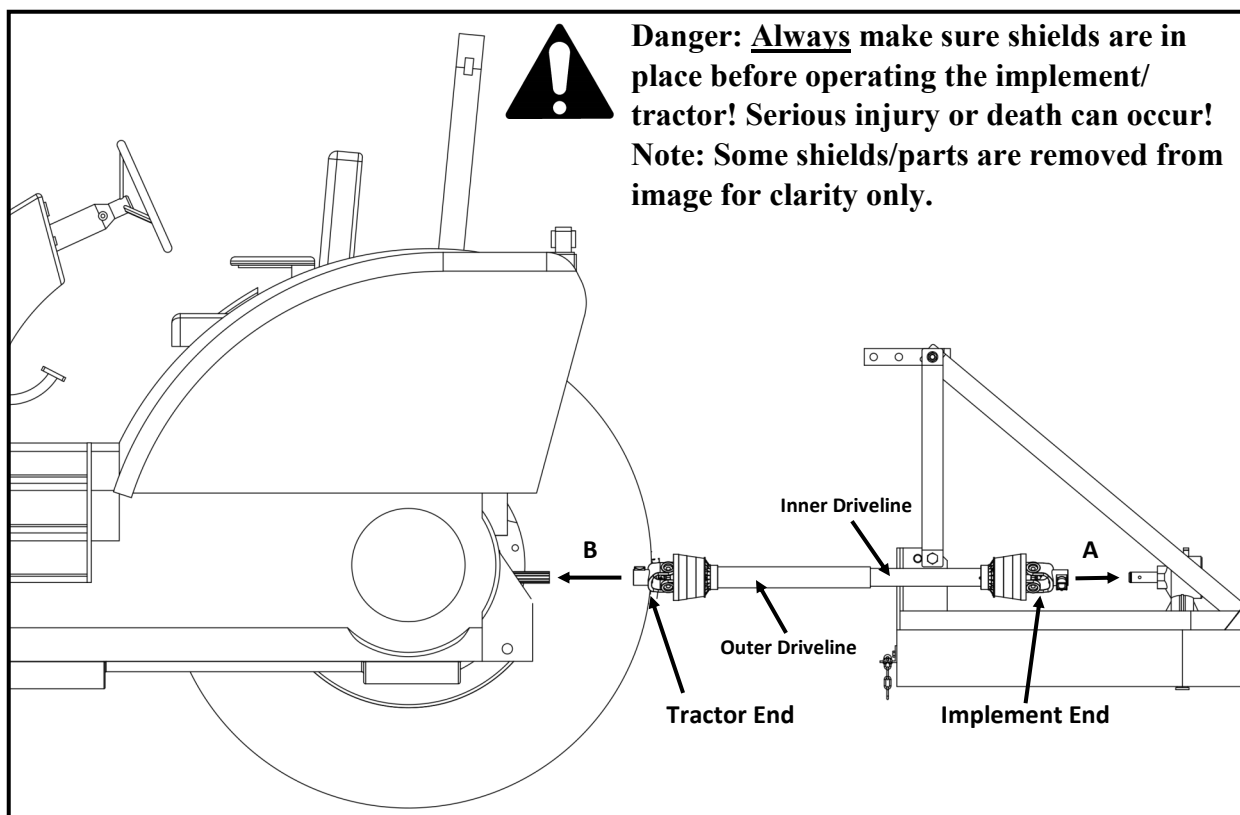
- Back up the tractor to the Rotary Cutter, while lining up the lower tractor links to the Rotary Cutter lower pins.
- Stop the engine, set the brake and remove the key from the tractor and block the tractor tires.
- Secure the lower tractor arms to the Rotary Cutter lower pins with lynch pins.
- Attach the tractor top link to the Rotary Cutter with the top link pin and r-clip.
- Adjust the tractor sway bars/chains to center the rotary cutter and remove excess sway.
- Adjust lower links and top link so that the Rotary Cutter is level.
- Operate the tractor hydraulic controls very slowly up and down. There should be no contact between the Rotary Cutter or any part of the tractor. Failure to check clearance can result in damage to the Rotary Cutter, tractor (especially the tires) and possible injury to the operator. Maintain no less than 6" of clearance between the Rotary Cutter, tractor and tractor tires throughout the complete range of motion.



PTO Driveline Instructions

Instructions for Installing a PTO Driveline:

1. Begin by parking the tractor and implement on a level, solid surface. Attach the implement to the tractor's hitch arms, upper and lower. Adjust the tractor's 3-point hitch so that the tractor's output shaft is level with the implement's input shaft.
2. Leave the tractor in gear, shut off the tractor engine, remove the key and set the park brake. Block the implement to prevent it from falling over or shifting.
3. Slide the inner yoke of the PTO shaft 'A' (implement end) onto the input shaft of the implement. Make sure the yoke is securely locked in place.
4. Slide the outer yoke of the PTO shaft 'B' (tractor end) onto the tractor input shaft. Make sure the yoke is securely locked in place.
5. Because of differences in tractor 3-point arms and implements, it may be necessary to shorten the PTO Driveline. See next page for **"Instructions for Shortening a PTO Driveline"**.
6. Check that the PTO Driveline yokes are securely attached to the tractor and implement before operating. PTO Drivelines not attached properly can cause serious injury or death!
7. If your PTO Driveline shields are equipped with chains, secure the chain to the tractor and or implement to prevent the shield from rotating.
8. Before starting tractor and engaging the PTO Driveline, make certain there are no people or animals between tractor and implement. Rotating PTO Drivelines can cause serious injury or death!



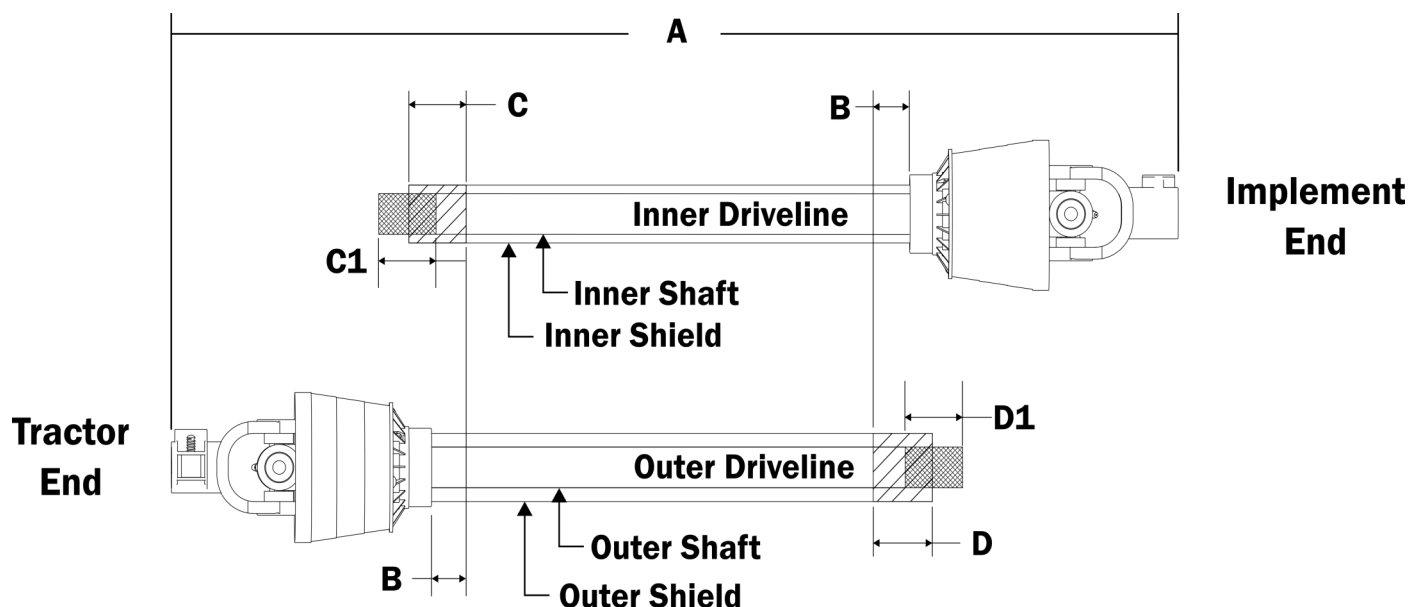
PTO Driveline Instructions

Instructions for Shortening a PTO Driveline:



Note: If you are not confident modifying the PTO Driveline, you should contact a Qualified Professional.

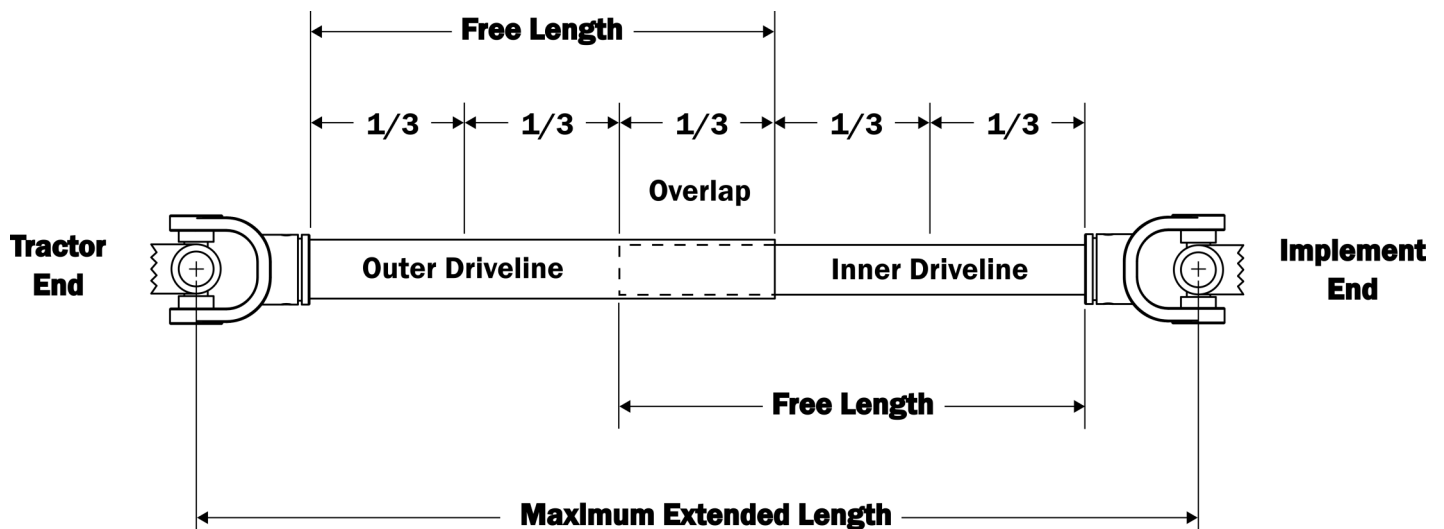
1. Separate the inner and outer PTO Drivelines. Leave separated at this time.
2. Attach the outer PTO Driveline to the tractor implement input shaft and inner PTO driveline to the implement input shaft.
3. With the drivelines parallel to one another, measure 1" (dim. 'B') back from the outer PTO Driveline shield (see fig. 2) and make a mark on the inner PTO Driveline.
4. Measure 1" (dim 'B') back from the inner PTO Driveline shield (see fig. 2) and make a mark on the outer PTO Driveline.
5. Remove the drivelines from the tractor and implement.
6. Measure from the end of the inner shield to the scribed mark (dim. "C"). Cut the inner shield at that mark. Cut the same amount off the inner shaft (dim. "C1").
7. Measure from the end of the outer shield to the scribed mark (dim. "D"). Cut the outer shield at that mark. Cut the same amount off the inner shaft (dim. "D1").
8. Clean off all burrs from both drivelines.
9. Refer to "Checking PTO Driveline Extended Length" section next.



PTO Driveline Instructions

Checking PTO Driveline Extended Length:

1. Apply multi-purpose grease to the outside of the inner driveline section. Assemble the outer and inner drivelines.
2. When fully extended, the maximum allowable length must have a minimum overlap of $\frac{1}{3}$ the free length of the inner and outer sections. Measure and record the maximum extended length for future reference.
3. Attach the outer PTO Driveline to the tractor implement input shaft and inner PTO driveline to the implement input shaft.
4. Pull both yoke ends to make sure they are properly seated on the input shafts. **Warning:** If the drive lines are not properly seated, they can separate from the tractor or implement, causing extensive damage and possibly serious injury or death.
5. Raise and lower the implement to determine the maximum extended length. Make sure the maximum extended length does not exceed the maximum length determined from step 2.



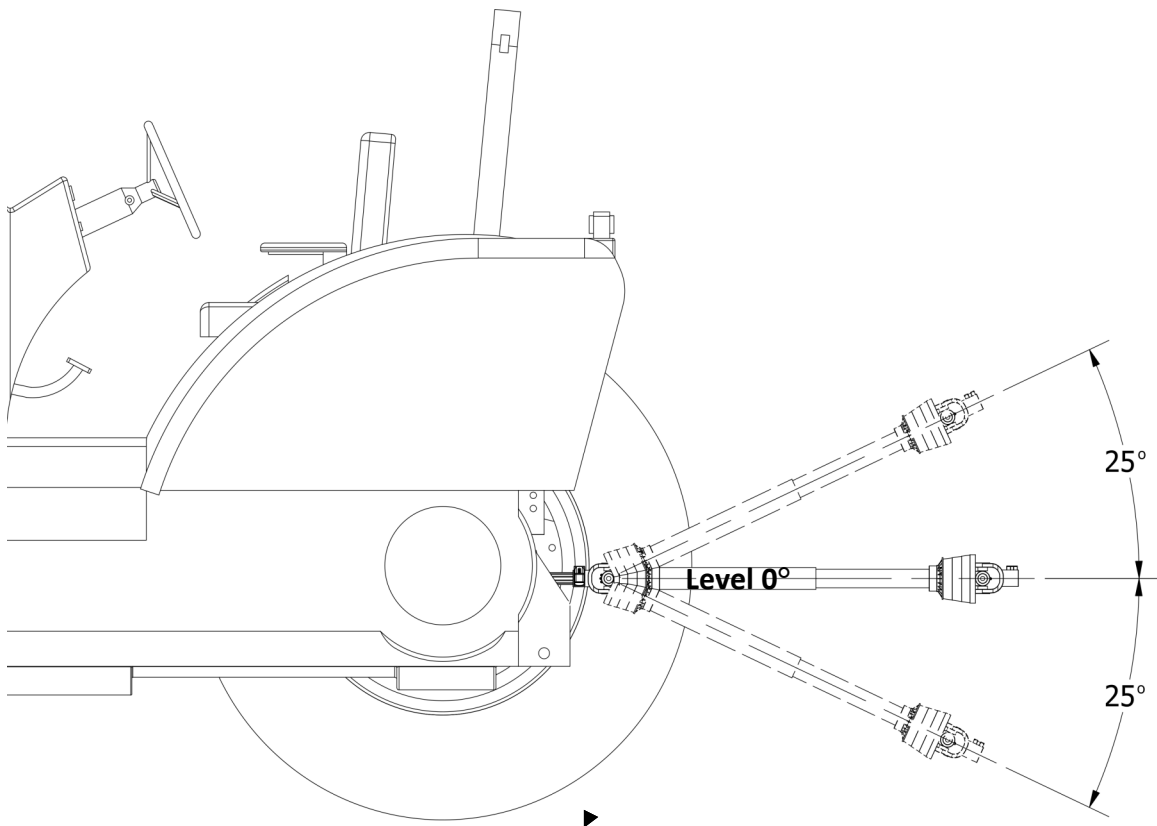
Danger: Always make sure shields are in place before operating the implement/tractor! Serious injury or death can occur!

Note: Some shields/parts are removed from image for clarity

PTO Driveline Instructions

Checking for PTO Driveline Interference:

1. Begin with the PTO Driveline level (0 degrees). Raise the implement at an angle no greater than 25 degrees from level. Check for any interference and the length of the PTO Driveline extended. Do not exceed the maximum extended length!
2. Next lower the PTO Driveline at an angle no greater than 25 degrees from level. Check for any interference and the length of the PTO Driveline extended. Do not exceed the maximum extended length!



Danger: Always make sure shields are in place before operating the implement/tractor! Serious injury or death can occur!

Note: Some shields/parts are removed from image for clarity

	⚠ DANGER
	<ul style="list-style-type: none"> • Keep away from rotating driveline. • Keep driveline shields, implement shields, and tractor PTO master shield in place and in good repair. • Operate only with 540 rpm PTO.

9270146

Scan the QR code below for more detailed information on PTO installation.

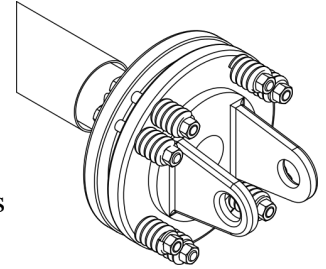


PTO Driveline Instructions

Adjustments for Slip clutch equipped PTO Drivelines:

The slip clutch must be adjusted before first use or after a storage period.

1. Using a marker, scribe a line across the exposed edges of the clutch plate and friction discs.
2. Back off compression nuts to free friction discs by turning each nut *exactly* 2 revolutions.
3. Start the tractor and run the driveline at a low idle to slip the friction discs. This will remove the dirt, corrosion and surface floss from the clutch plate faces.
4. Disengage PTO, shut down tractor and wait for all components to come to a complete stop.
5. Inspect the clutch and ensure that the scribed markings on the disc and plates have changed position. If any two marks are still aligned, this is an indication that these discs have not slipped. It may be necessary to completely disassemble the clutch to free them up.
6. After ensuring all discs are free, tighten the compression nuts, uniformly, *exactly* 2 revolutions to reset the clutch original pressure.



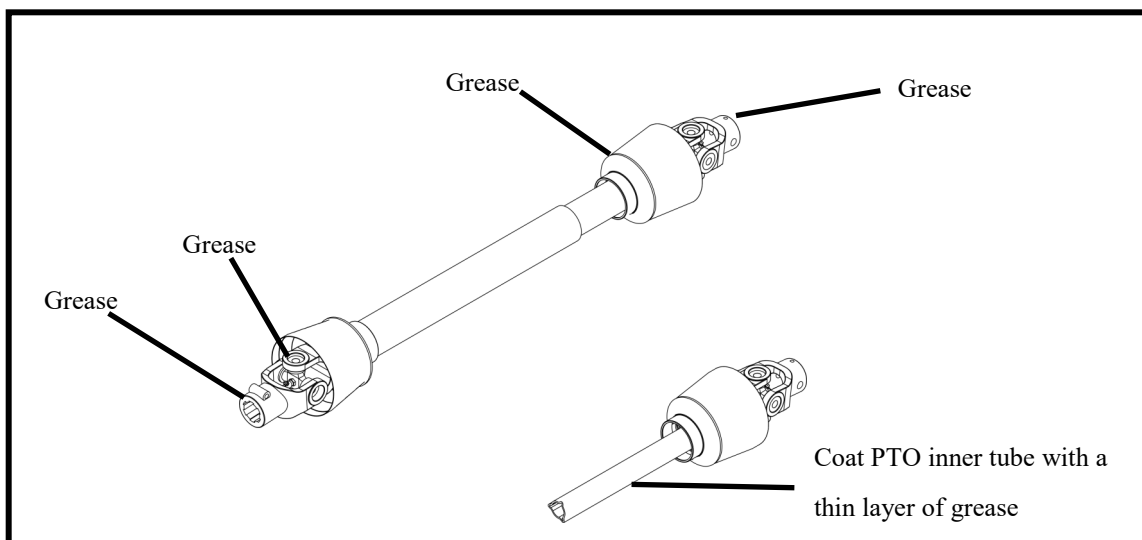
Caution: Slip Clutches may become hot. Do Not Touch. Keep the slip clutch area clear of material that may catch fire. Slip clutches have adjustable torque settings. The torque setting varies with the different compression of each spring. All the springs should have an equal amount of compression.

Important: Do not over-tighten the compression nuts as this may impair performance or cause premature wearing of the slip clutch.

Lubrication:

Every 8 hours:

Grease the PTO shaft and apply a light layer of grease on the inner tube.



Maintenance & Lubrication

MAINTENANCE & LUBRICATION

To carry out maintenance on this machine follow the safety recommendation listed in this manual.

- Engage park brake, disengage PTO, shut off tractor and remove key before proceeding with any of the following maintenance.
- Be sure that the area where the maintenance is to be carried out is dry, clean and level.
- Suitable safety stands are always to be used if the cutter is required to be raised. Never rely on the tractor hydraulics when working beneath the cutter.
- Correct servicing and adjustment is the key to the long life of any farm implement. With careful and systematic inspection you can avoid costly downtime, maintenance and repairs.

MAINTENANCE INSTRUCTIONS

Pre-Operating Checks

- Check all bolts are tight, pins and clips are in the correct position.
- Check Power Take Off (PTO) shaft is connected correctly.
- Check for oil leaks from the gearbox, above and below the cutter body.
- Clear any foreign material from the cutter bar and check for oil leaks from the bottom seal of the gearbox.
- Check the blades and blade bushes for wear or damage and replace if necessary. Blade bolts must be screwed tight as possible on the blade bar.
- Check that blade bar and boss and tight on the gearbox shaft. Check the friction clutch is tight on the gearbox shaft, and the plates are in good order.

POWER TAKE-OFF SHAFT

The PTO shaft used is of the normal agricultural type. Spare kits, comprising of the spider gear, needle bearings, circlips, etc. are available from most agricultural dealers.

For correct part numbers, see parts manual when ordering spare parts.

Some routine maintenance is needed to ensure a trouble free life the the PTO shaft. For best results, follow instructions below.

- Regularly grease PTO shaft sliding tubes.
- Grease both ends of PTO shaft daily.
- Ensure check chains are securely attached and in good condition.
- Check that PTO guard is in good condition and replace if not.
- Check universal joint bearing journals for roughness or slackness - replace if necessary.

Maintenance & Lubrication

Slip Clutch

A slip clutch is incorporated in the PTO driveline. It is designed to slip, absorb the shock load, and protect the driveline. Clutch torque setting is factory set. If clutch slips excessively, check friction discs for excessive wear. Discs are 1/8" thick when new. Replace after 1/32" wear. If your slip clutch has a compression spring check length of springs as assembled on clutch. Length should be 1.5/16". If not adjust length of bolt to obtain proper spring length. If additional adjustment is required tighten each bolt 1/2 turn.

Note: DO NOT tighten spring bolts over ½ turn at any adjustment. Excessive tightening can cause clutch to become frozen and not slip which could cause damage to tractor PTO, drivelines or gearbox. Clutches not used for 30 days should be slackened off, run for a second and re-tightened to above settings.

GREASING

The lubrication chart below shows the frequency at which the greasing points should be lubricated:

PTO SHAFT BEARINGS - Weekly / PTO SHAFT TUBES - Weekly / CASTOR WHEEL - Weekly

DO NOT over grease or it could cause overheating and damage to bearing seals.



Greasing location

Gear box

Vibration of the Gearbox can cause premature failure of the shaft bearings, as well as structural failures. It is important not to operate the machine with the vibrating. As soon as any vibration is felt stop operating the machine and make the checks listed below.

Stop tractor engine and neutralize PTO drive. Check for missing flails. Replace missing flails immediately.

Check and ensure that all flail attachments are tight. If any flails are missing or loose and have been replaced and tightened, run the rotors and test for vibration. If vibration is still present, check as follows.

Stop tractor engine and neutralize PTO drive.

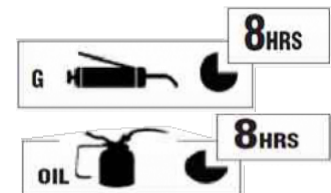
Check gearbox bearings for roughness or signs of slackness.

Replace bearings which suffer the above symptoms. If vibration persists it is an indication that the shaft is probably bent and must therefore be replaced.

MAINTENANCE & LUBRICATION SCHEDULED

Daily Maintenance

- Separate and lubricate all PTO shafts as per PTO lubrication info.
- Grease all universal joints on all PTO shafts
- Check the level of the 80W-90 gear oil in the gearbox at the level plug and top



Maintenance & Lubrication

- Check underside of cutter body and report damage or damaged parts.
- Check blades for visible signs of damage or excessive wear and service or repair.
- Ensure blade beam and gearbox hub are tight on the gearbox output shaft and tighten if required.
- Clear any foreign material from cutter on top and below the deck and check all gearbox seals for leaking oil.



40hr Maintenance

- Check over entire unit for any damaged, worn or fatigued parts and report, repair or replace as necessary.
- Check universal joints for any excessive wear.
- If a roller is fitted, check for any play in the bearings and service if necessary. If wheels are fitted, check for play in bearings, and service if necessary. Check the tire pressure (approx. 22 P.S.I) and check the rim and tyre for wear and damage.
- Check for play in the castor bushes, replace if necessary.
- Replace danger/safety Symbols if deteriorated.



300hr Maintenance

- Complete full service as per 8 hour procedures.
- Dismantle friction clutch and inspect the friction discs for wear, distortion or damage. Clutch faces may be polished by loosening the clutch springs and engaging the PTO at low revs to allow the clutch to spin. Do not allow the clutch to overheat. Stop the tractor and remove the key. Reset the clutch by compressing the springs completely then backing the nuts off 2-1/2 turns.



Weekly Maintenance

- Check and tighten all nuts and bolts on cutter and replace if faulty.
- Check safety friction clutch by completely compressing clutch spring and then backing off 2-1/2 turns.

Initial Operation of Rotary Cutter

- Ensure gearbox has the correct amount of 80w-90 gear oil. Check all nuts and bolts are correctly tightened and check clutch settings. Repeat this procedure after two hours.
- Make sure all parked machines are on a hard, level surface and engage all safety devices.

Maintenance & Lubrication

PARKING AND REMOVAL

In the parking position, the machine rests on the skids at both sides. To put the machine in this position, the following procedure is necessary.

- Remove the bolt from the height adjusting clevis on the main deck to allow the castor arm to swing up.
- Lower the machine to the ground using the tractor hydraulics.
- Stop tractor engine and disengage PTO drive.
- Slacken lift arm and check chains. • Remove top link.
- Remove linch pin and rings securing lift arms to mounting pins.
- Remove mounting pins from mounting clevis and lift arms.
- Grease mounting pins. • Replace linch pins.
- Release tractor end of PTO shaft and pull back along splines.
- Start tractor engine and drive carefully forward.
- Grease spline and tubes of PTO and store with the machine or keep in a safe dry place.

DISPOSAL

If the machine is out of order, all the parts that may cause danger have to be made inert.

The materials forming the machine have to undergo a differentiated division. These materials are”

- Steel (frame, blades, etc.)
- Gear oil (within gearbox)
- Plastic (PTO guarding)

All the above mentioned operations and disposal have to be carried out in total respect of the present provisions of the law on the subject.

Trouble-Shooting Guide

PROBLEM	CAUSES	REMEDIES/SOLUTIONS
Irregular Cut	<ul style="list-style-type: none"> • Worn, bent or broken blades • Machine is not level with the ground • Material blockage due to speed 	<ul style="list-style-type: none"> • Replace blade(s) • Level the machine • Reduce working speed
Machine Noise	<ul style="list-style-type: none"> • Loose bolts • Cracks or initiation of cracks in frame 	<ul style="list-style-type: none"> • Tighten Bolts • Have it repaired in Authorized workshop
Gearbox Noise	<ul style="list-style-type: none"> • Lack of oil • Worn bearings • Worn gears 	<ul style="list-style-type: none"> • Fill to level • Replace • Replace
Premature Blade Wear	<ul style="list-style-type: none"> • Blades touching the ground 	<ul style="list-style-type: none"> • Adjust the height of the cut
Excessive Backlash In Joints	<ul style="list-style-type: none"> • Worn pins 	<ul style="list-style-type: none"> • Replace
Vibration	<ul style="list-style-type: none"> • Damaged blades • Damaged beam • Bent spindle • Worn spindle bearings • Twisted PTO shaft • PTO shaft crosses worn • Lifting too high with PTO engaged • Broken or worn blades • Unbalanced rotor 	<ul style="list-style-type: none"> • Replace • Replace • Replace • Replace • Replace shaft section • Replace • Disengage/reduce lift • Replace • Replace in authorized workshop
Drive Shaft Failures	<ul style="list-style-type: none"> • Inadequate lubrication of sliding members • Incorrect lengths of sliding members. • Incorrect clutch setting • Over lifting rotary cutter while drive shaft rotating • Working rotary cutter using tractor foot throttle 	<ul style="list-style-type: none"> • Clean and lubricate as per maintenance schedule • Shorten or replace as required • Adjust correctly • Allow PTO drive to stop prior to high lifts • Work all implements with hand throttle and select gear to give required travel speed • (Use foot throttle only for rad transport)
Clutch Overheating	<ul style="list-style-type: none"> • Incorrect setting • Friction discs worn • Machine overworked 	<ul style="list-style-type: none"> • Reset • Replace • Reduce work rate or use a smaller tractor
Gearbox Leaking Oil	<ul style="list-style-type: none"> • Damaged seals or gaskets • Bent output spindle 	<ul style="list-style-type: none"> • Replace seals/gaskets • Replace spindle
Blade Wedges, Blade Bolts Wearing	<ul style="list-style-type: none"> • Low operating RPM • Journals worn • Blade bolts not tight 	<ul style="list-style-type: none"> • Increase PTO to 540 rpm • Replace journals, bolts and nuts • Tighten
Excessive Blade Wear	<ul style="list-style-type: none"> • Excessive blade speed • Cutting height too low • Sandy or stony conditions 	<ul style="list-style-type: none"> • Check PTO rpm is 540 rpm max • Raise cutting height • Accept wear or raise cutting height
Scalping	<ul style="list-style-type: none"> • Cutting height too low • Linkage pins worn 	<ul style="list-style-type: none"> • Raise cutting height • Replace
Excessive Skid Damage to Turf &/or Skid Wear	<ul style="list-style-type: none"> • Too much reliance on skids for support of cutter • Linkage pins worn 	<ul style="list-style-type: none"> • Increase support of Rotary Cutter on the tractor linkage; fit a rear height control wheel or rollers • Replace

Torque Specifications

Torque Specifications for Common Bolt Sizes															
Inches		Bolt Head Identification						Metric		Bolt Head Identification					
										5.8		8.8		10.9	
		Grade 2		Grade 5		Grade 8				Class 5.8		Class 8.8		Class 10.9	
Bolt size (inches)	Thread pitch	N.m	ft-lb	N.m	ft-lb	N.m	ft-lb	Bolt size (metric)	Thread pitch	N.m	ft-lb	N.m	ft-lb	N.m	ft-lb
1/4"	20	7	5	11	8	16	12	M5	0.08	4	3	6	4	9	7
1/4"	28	8	6	13	10	19	14	M6	1	6	4	10	7	15	11
5/16"	18	15	11	24	17	33	25	M8	1.25	16	12	25	18	36	27
5/16"	24	17	13	26	19	37	27	M8	1	17	13	26	19	38	28
3/8"	16	27	20	42	31	59	44	M10	1.5	31	23	48	35	71	52
3/8"	24	31	23	47	35	67	49	M10	1.25	33	24	51	38	75	55
7/16"	14	43	32	67	49	95	70	M10	1	35	26	53	39	78	58
7/16"	20	48	36	75	55	106	78	M12	1.75	54	40	84	62	123	91
1/2"	13	66	48	102	75	144	106	M12	1.5	56	41	87	64	128	94
1/2"	20	75	55	115	85	163	120	M12	1.25	59	44	90	66	133	98
9/16"	12	95	70	147	109	208	154	M14	2	84	62	133	98	195	144
9/16"	18	106	79	164	121	232	171	M14	1.5	94	69	142	105	209	154
5/8"	11	132	97	203	150	287	212	M16	2	131	97	206	152	302	223
5/8"	18	149	110	230	170	325	240	M16	1.5	141	104	218	161	320	236
3/4"	10	233	172	361	266	509	376	M18	2.5	181	133	295	218	421	310
3/4"	16	261	192	403	297	569	420	M18	2	196	145	311	229	443	327
7/8"	9	226	167	582	430	822	606	M18	1.5	203	150	327	241	465	343
7/8"	14	249	184	642	473	906	668	M20	2.5	256	189	415	306	592	437
1"	8	339	250	873	644	1232	909	M20	1.5	288	212	454	335	646	476
1"	12	371	273	955	704	1348	995	M22	2.5	344	254	567	418	807	595
1-1/8"	7	480	354	1077	794	1746	1288	M22	1.5	381	281	613	452	873	644
1-1/8"	12	539	397	1208	891	1958	1445	M24	3	444	327	714	526	1017	750
1-1/4"	7	677	500	1519	1120	2463	1817	M24	2	488	360	769	567	1095	808
1-1/4"	12	750	553	1682	1241	2728	2012	M27	3	656	484	1050	774	1496	1103
1-3/8"	6	888	655	1992	1469	3230	2382	M27	2	719	530	1119	825	1594	1176
1-3/8"	12	1011	746	2268	1673	3677	2712	M30	3.5	906	668	1420	1047	2033	1499
1-1/2"	6	1179	869	2643	1949	4286	3161	M30	2	1000	738	1600	1180	2250	1659
1-1/2"	12	1326	978	2974	2194	4823	3557	M36	4	1534	1131	2482	1830	3535	2607

Notes:

This chart is an approximate estimate of torque values.

Always tighten hardware to these values unless a different torque value or tightening procedure is listed for a specific application.

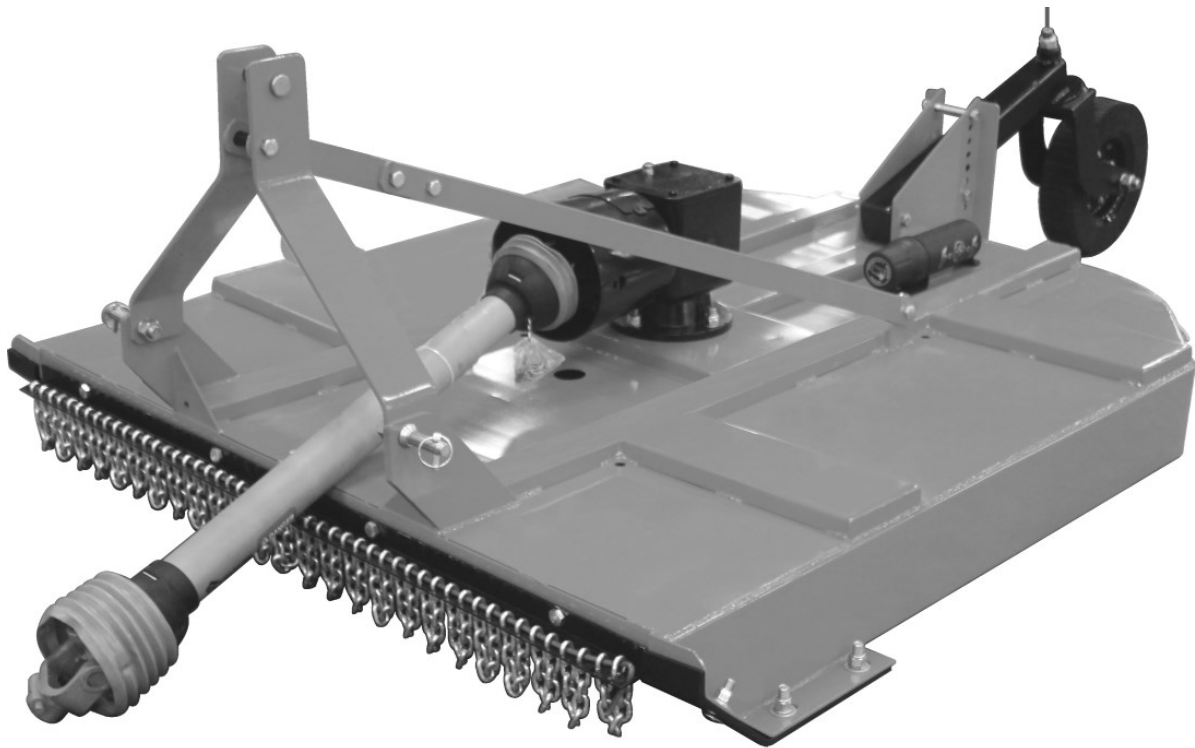
Fasteners must always be replaced with the same grade as specified in the manual.

Always use the proper tool for tightening hardware: SAE for SAE hardware and Metric for Metric hardware.



Rotary Cutter

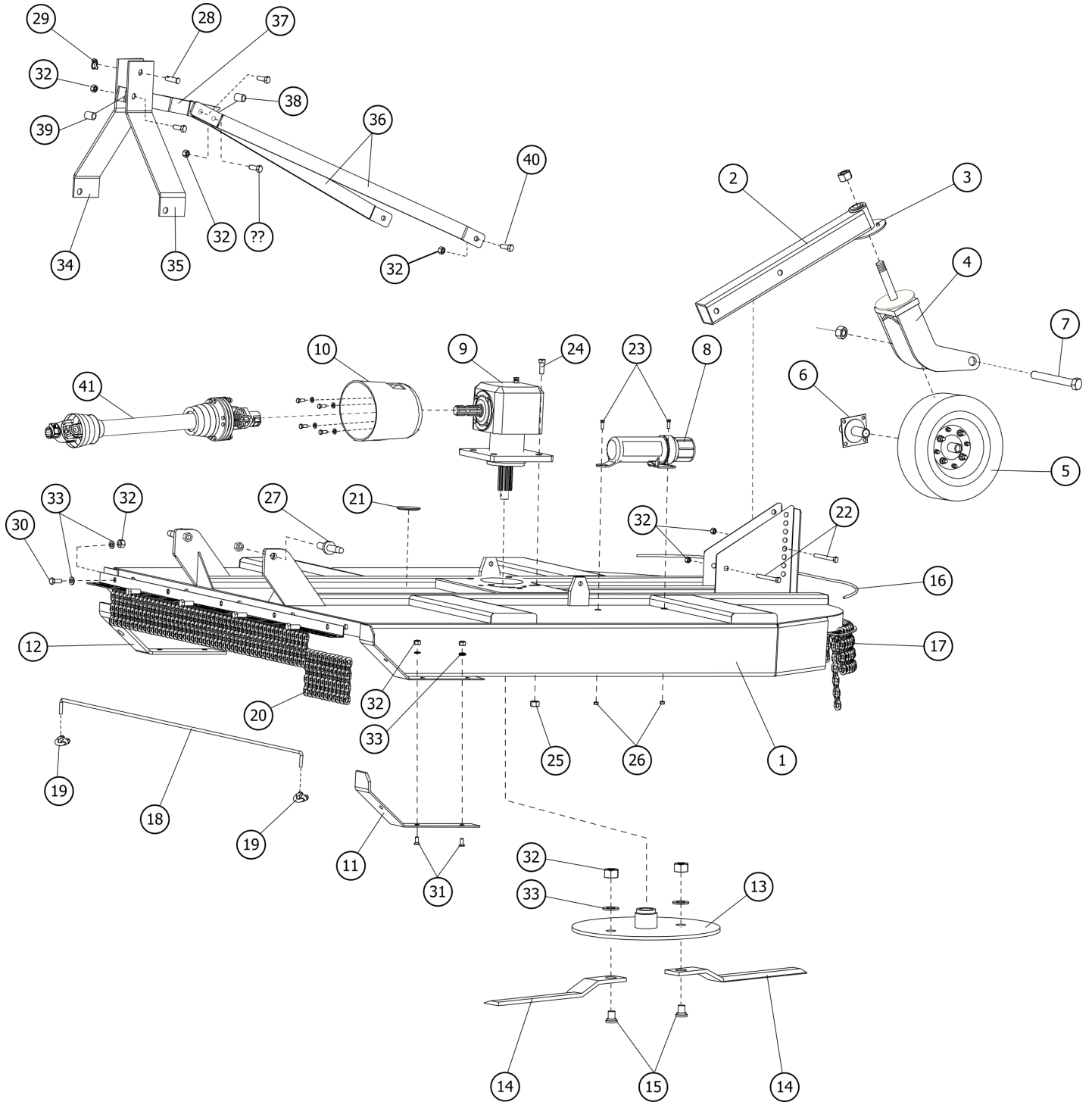
MRC - HRC



Parts Manual

Rev. 07/24

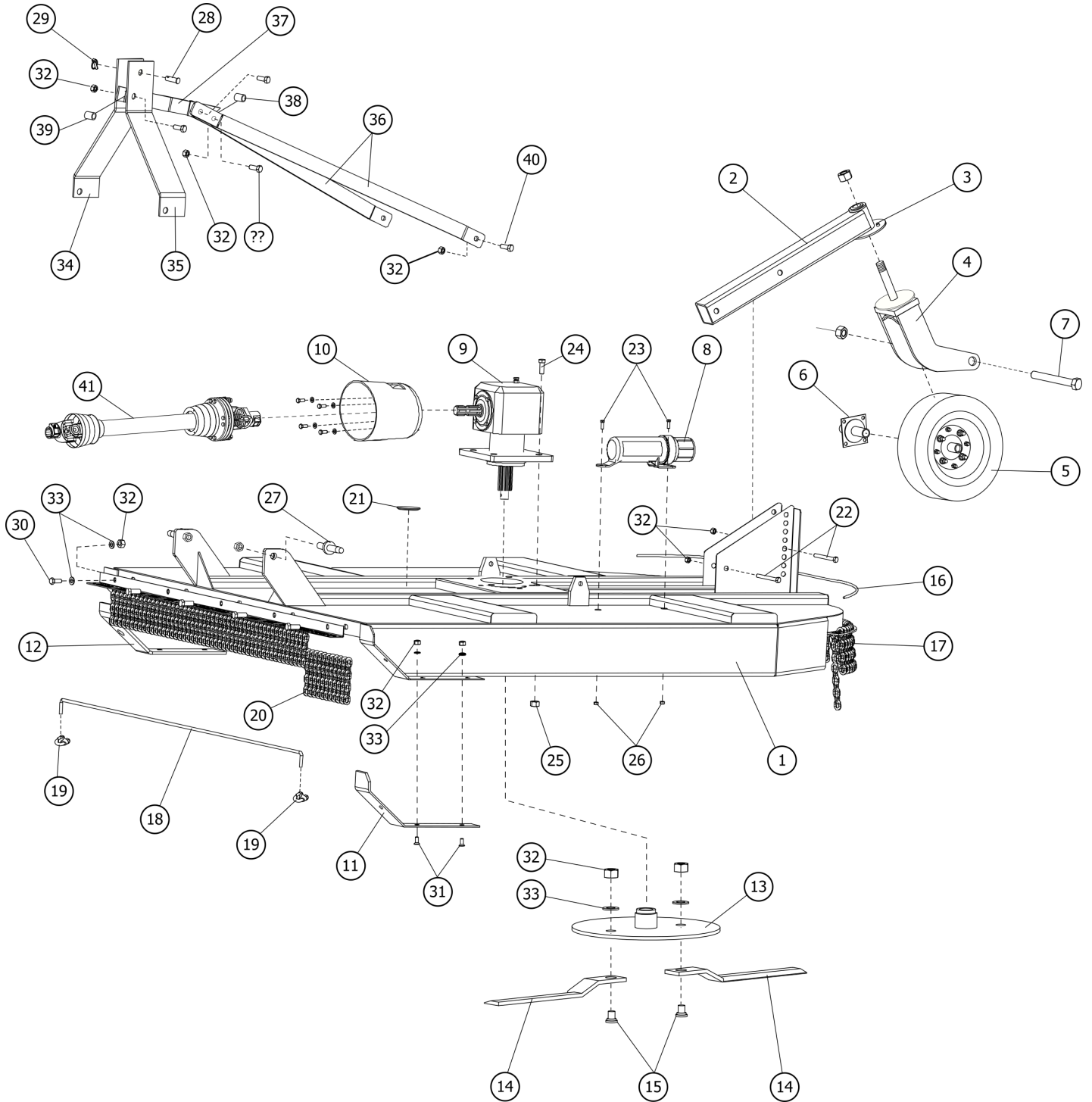
MRC-6 Rotary Cutter 6'



MRC-6 Rotary Cutter 6'

Item	Part Number	Description	Qty.
1	MRC40001	Frame assembly - 6ft.	1
2	MRC40002	Depth wheel pipe	1
3	MRC40003	Grease nipple	2
4	MRC40004	Fork assembly	1
5	MRC40005	Tire assembly	1
6	MRC40006	Fabricated hub set	1
7	MRC40007	Tire axle pin set	1
8	MRC40008	Manual holder	1
9	MRC40009	Gear box	1
10	MRC40010	Safety cover	1
11	MRC40011	Skid - LH	1
12	MRC40012	Skid - RH	1
13	MRC40013	Cutter bar - 6ft.	1
14	MRC40014	Blade - 6ft.	2
15	MRC40015	Blade bolt M22-1.5	2
16	MRC40016	Wire rope rear - 6ft.	1
17	MRC40017	Chain link rear - 6ft.	25
18	MRC40018	Wire rope front - 6ft.	1
19	MRC40019	Wire rope end clamps	4
20	MRC40020	Chain link front - 6ft.	30
21	MRC40021	Safety cap grommet	1
22	BM1620125	Bolt HH M16-2.0x125	4
23	BM0812525	Bolt HH M8-1.25x25	2
24	BM182575	Bolt HH M18-2.5x75	4
25	LN1825	Nut elastic stop M18-2.5	4
26	LN08125	Nut elastic stop M8-1.25	2
27	MRC40022	Pin M30 x 148	2
28	MRC40023	Pin M19x 130	1
29	MRC40024	Lynch pin M10	1
30	BM162040	Bolt HH M16-2.0x40	-
31	SSM162040	Bolt CS M16-2.0x40	6
32	NM2215	Nut M22-1.5	18
33	LW22	Washer lock M22	-
34	MRC40025	Vertical brace RH	1
35	MRC40026	Vertical brace LH	1
36	MRC40027	Horizontal brace	2
37	MRC40028	Floating top link	1
38	MRC40029	Bushing 23 x 17 x 20	1
39	MRC40030	Bushing 23 x 17 x 70	1

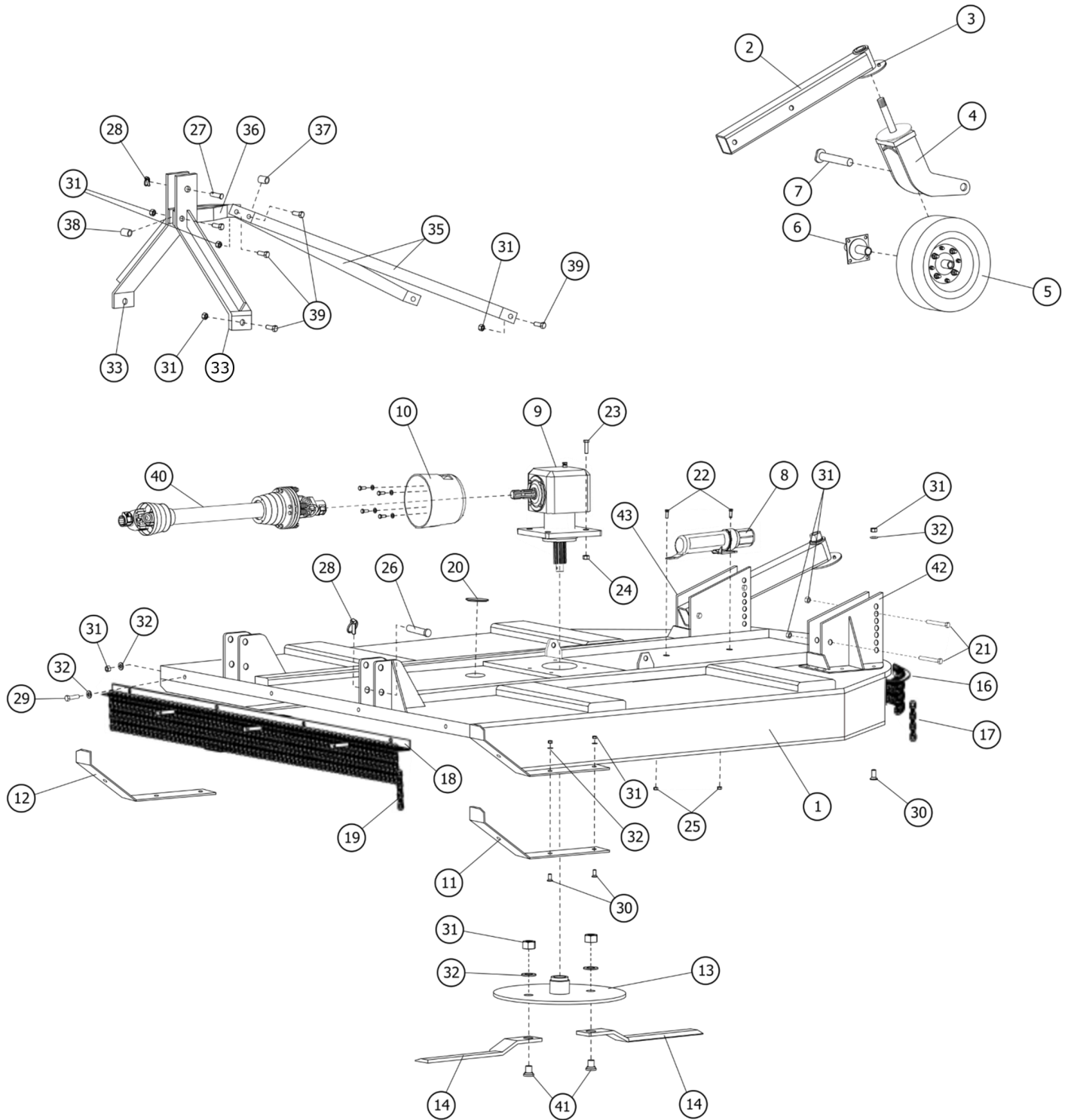
MRC-6 Rotary Cutter 6'



MRC-6 Rotary Cutter 6'

Item	Part Number	Description	Qty.
40	BM162075	Bolt HH M16-2.0x75	4
41	MRC40031	PTO shaft MRC/HRC	1
42	SNM2215	Nut self locking Stover M22-1.5	2
-	MRC40071	Half PTO shaft assembly – T07 (tractor side)	1
-	MRC40072	MRC40072 Half PTO shaft assembly clutch type – T07 (implement side)	1

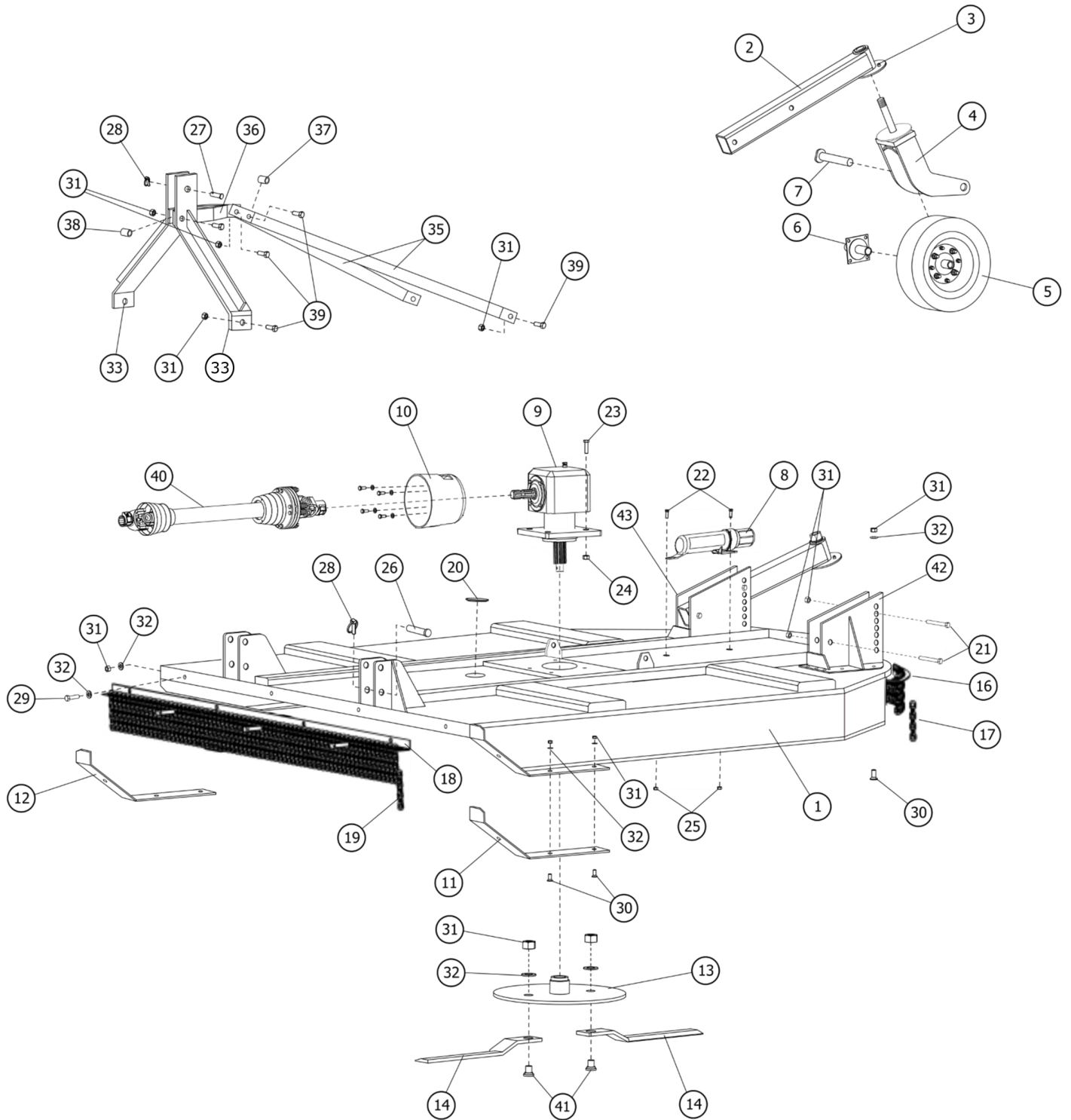
HRC-7 Rotary Cutter 7'



HRC-7 Rotary Cutter 7'

Item	Part Number	Description	Qty.
1	HRC40032	Frame assembly - 7 ft.	1
2	MRC40002	Depth wheel pipe	2
3	MRC40003	Grease nipple	2
4	MRC40004	Fork assembly	2
5	MRC40005	Tire assembly	2
6	MRC40006	Fabricated hub set	2
7	MRC40007	Tire axle pin set	2
8	MRC40008	Manual holder	1
9	MRC40009	Gear box	1
10	MRC40010	Safety cover	1
11	HRC40033	Skid - LH - 7 ft.	1
12	HRC40034	Skid - RH - 7 ft.	1
13	HRC40035	Cutter bar - 7ft.	1
14	HRC40036	Blade - 7ft.	2
15	MRC40015	Blade bolt M22-1.5	2
16	HRC40037	Wire rope rear - 7ft.	1
17	MRC40017	Chain link rear - 7ft.	33
18	HRC40038	Front chain link plate	1
19	MRC40020	Chain link front	30
20	MRC40021	Safety cap grommet	1
21	BM1620125	Bolt HH M16-2.0x125	4
22	BM0812525	Bolt HH M8-1.25x25	2
23	BM182575	Bolt HH M18-2.5x75	4
24	LN1825	Nut elastic stop M18-2.5	4
25	LN08125	Nut elastic stop M8-1.25	2
26	HRC40039	Pin M28 x 155	2
27	HRC40040	Pin M25 x 130	1
28	MRC40024	Lynch pin M10	1
29	BM162040	Bolt HH M16-2.0x40	4
30	SSM162040	Bolt CS M16-2.0x40	18
31	NM1620	Nut elastic stop M16-2.0	18
32	LW16	Washer lock M16	18
33	HRC40073	Vertical brace HRC-7	2
34			
35	HRC40069	Horizontal brace HRC-7	2
36	MRC40028	Floating top link	1
37	MRC40029	Bushing 23 x 17 x 20	1
38	MRC40030	Bushing 23 x 17 x 70	1
39	MRC40063	Bolt HH M16-2.0x65	4

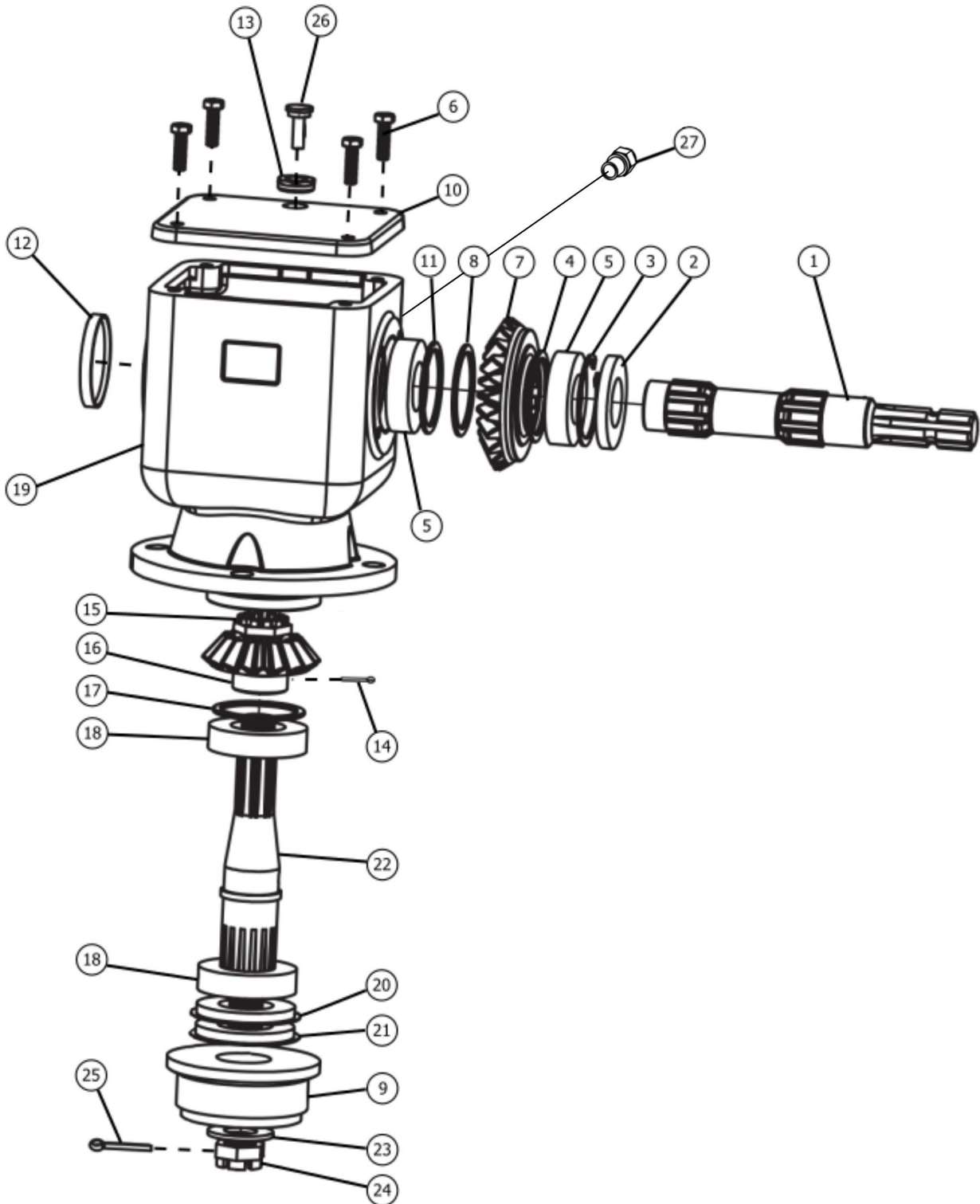
HRC-7 Rotary Cutter 7'



HRC-7 Rotary Cutter 7'

Item	Part Number	Description	Qty.
40	MRC40031	PTO shaft	1
-	MRC40071	Half PTO shaft assembly – T07 (tractor side)	1
-	MRC40072	MRC40072 Half PTO shaft assembly clutch type – T07 (implement side)	1
41	MRC40064	Blade bolt	2
42	MRC40065	Depth wheel adjustment LH	1
43	MRC40066	Depth wheel adjustment RH	1
44	SNM2215	Nut self locking Stover M22-1.5	2

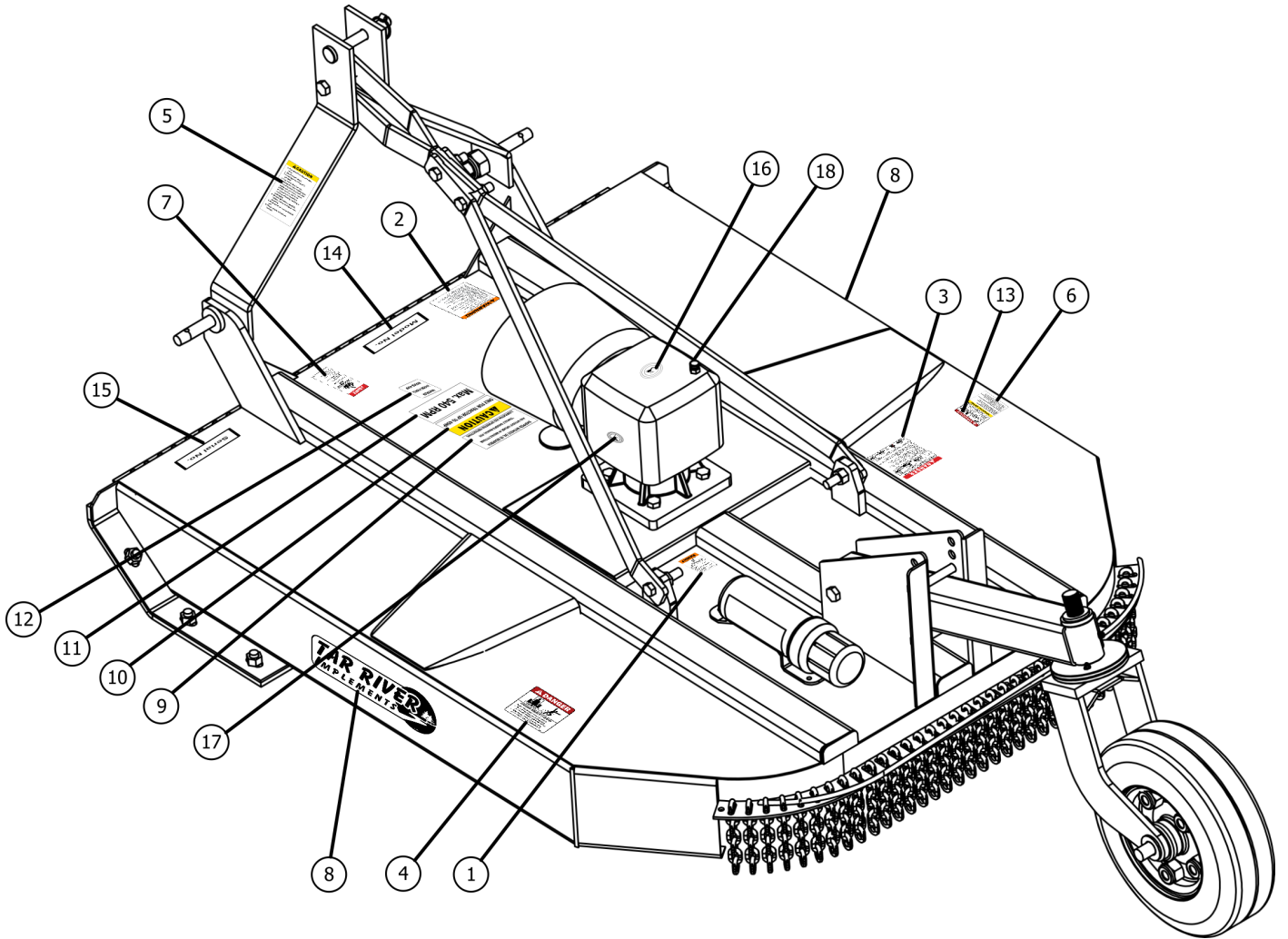
Rotary Cutter Gearbox



Rotary Cutter Gearbox

Item	Part Number	Description	Qty.
1	MRC40041	Input shaft, 75 hp (1:1.4)	1
2	MRC40042	Oil seal (GB/T9877. 1-88), FB45x85x10, MHF	1
3	MRC40043	Interna circlip 85, GB/T894. 1-86)	2
4	MRC40044	Adjusting washer (70.3x84.7)	10
5	B30209	TRB bearing 30209, (45x85x20.75)	2
6	BM101522	Bolt HH M10x22	4
7	MRC40045	Bevel gear (23 T), 75 HP, (1:1.4)	1
8	SRE-50	External retaining ring 50	1
9	MRC40046	Slotting shaft sleeve, 75 HP (1:1.4)	1
10	MRC40047	Gearbox cover plate, 75 HP (1:1.4)	1
11	MRC40048	Spacer, (45.3x65.3x2.5)	1
12	MRC40049	Cap, (MHF-1623-1-02)	1
13	MRC40050	Breather nut 22 x 1.5	2
14	MRC40051	Split pin, (4x55)	1
15	MRC40052	Castle nut, 30 x 1.5	1
16	MRC40053	Pinion gear (16T), 75 HP (1:1.4)	1
17	MRC40054	Adjusting spacer, 50.3x70.3	10
18	B30210	TRB 30210, (50x90x21.75)	2
19	MRC40055	Gearbox housing, 75 HP, (1:1.4)	1
20	MRC40056	Oil seal, (50x90x10)	1
21	MRC40057	Protecting cover, 75 HP (1:1.4)	1
22	MRC40058	Output shaft, 75 HP (1:1.4)	1
23	MRC40059	Washer 30 (31x56x6)	1
24	MRC40060	Nut HH 75 HP, (1:14)	1
25	MRC40061	Split pin (6x60)	1
26	MRC40062	Breather valve	1
27	CRT40144	Sight glass	1
	MRC40009	Gearbox Complete	

MRC-7 Rotary Cutter 7'



MRC-7 Rotary Cutter 7'

⚠ WARNING

MOVING PART HAZARD
To prevent serious injury or death from moving parts:
 ■ Close and secure guards and shields before starting.
 ■ Keep hands, feet, hair and clothing away from moving parts.
 ■ Disconnect and lockout power source before adjusting or servicing.
 ■ Do not stand or climb on machine when operating.

RT10044

1

⚠ WARNING

To prevent serious injury or death:
 si no lee inglés, pída ayuda a alguien que sí lo lee para que lo traduzca las medidas de seguridad

- Read and understand Operator's Manual before using. Review annually.
- Do not permit riders on the tractor including children.
- Do not allow children to operate unit.
- Operate only with guards installed and in good working condition.
- Keep away from moving parts.
- Operate only with tractor equipped with ROPS and seatbelts.
- Use extra care when operating on rough terrain or when rocks or debris are present.
- Do not operate in a raised position.
- Stop engine, lower unit, set brake and wait for all moving parts to stop before dismounting.
- Support unit securely before working beneath it.
- Stop engine, lower unit, set brake and wait for all moving parts to stop before dismounting.
- Transport with clean reflectors, SMV and working lights as required by Federal, State and local laws.
- Keep yourself, others and clothing away from rotating PTO.
- Operate only at a safe distance from bystanders.
- Do not stand between tractor and unit.
- Be careful on uneven terrain. Decrease speed when turning.
- Locate underground utility lines before operating unit.
- Do not exceed a safe transport speed.

RT10044D

2

⚠ DANGER

FAILING TO FOLLOW SAFETY MESSAGES AND OPERATING INSTRUCTIONS CAN CAUSE SERIOUS BODILY INJURY OR EVEN DEATH TO OPERATOR AND OTHERS IN THE AREA.

1. READ MANUAL.	2. SEAT BELTS, ROPS, NO RIDERS.	3. SAFETY GLOVES, HARD HAT, SAFETY GLASSES.	4. SUPPORT MACHINE TO AVOID DRIVING.
-----------------	---------------------------------	---	--------------------------------------

- Read operator's manual carefully and pay attention to safety details for tractor and Rotary Cutter thoroughly to avoid misuse, abuse and accidents. Practice before operating.
- Operate only with ROPS and belted seat belt to avoid injury and possible resulting death from overturning. Do not allow riders on tractor or Rotary Cutter. Falling off can cause serious injury or death by being run over by tractor or Rotary Cutter or by being hit by the rotating Rotary Cutter blades. Do not allow children on or near Rotary Cutter or tractor.
- To avoid injury from falling objects wear hard hat, safety glasses and shoes.
- Block up or support machine securely before putting hands or feet under, or working underneath lifted parts to avoid crushing injury or even death from sudden backlatch dumping. Make sure area is clear before lowering.
- Before transporting, put lift lever in LIFT (Detent) position and follow all traffic codes. Slow down at angle, in turns and on hillsides.
- Make sure that SMV sign, warning lights and reflectors are clearly visible.
- Never operate with Rotary Cutter raised off ground to reduce possibility of injury from objects thrown under Rotary Cutter structure.
- Before dismounting, secure Rotary Cutter in transport position or lower to ground, stop PTO, put tractor in park or set brake, stop engine and remove key. Never re-ent or dismount moving vehicle to prevent possible crushing injury or death.

5. TRANSPORT SAFELY.	6. USE SMV, LIGHTS & REFLECTORS.	7. DO NOT OPERATE WITH ROTARY CUTTER RAISED.	8. MOUNTING & DISMOUNTING VEHICLE.
----------------------	----------------------------------	--	------------------------------------

RT10044C

3

⚠ DANGER

THROWN OBJECT HAZARD
To prevent serious injury or death:
 • Do not operate unless all guards are installed and in good condition.
 • Stop blade rotation if bystanders come within several hundred feet.

RT10044

4

⚠ CAUTION

- Read Operator's Manual before using.
- Do not permit riders.
- Do not operate with guards removed.
- Keep hands, feet, hair and clothing away from moving parts.
- Place all controls in neutral, stop engine, set park brake, remove ignition key and wait for all moving parts to stop before servicing, adjusting, repairing or unplugging.
- Remove bystanders, especially children, before starting or while operating.
- Block up before working beneath unit.
- Review safety instructions annually.

5

⚠ DANGER

ROTATING BLADES - KEEP AWAY!
To prevent serious injury or death when the engine is running and the blades are rotating:

- Never allow riders, especially children, on tractor or mower.
- Do not operate with bystanders in mowing area.
- Do not operate with deflectors/guards removed.
- Do not place hands or feet under deck.

M400

6

⚠ DANGER

ROTATING DRIVELINE HAZARD - KEEP AWAY!
To prevent serious injury or death from rotating driveline:

- Keep all guards in place when operating.
- Operate only at 540 RPM.
- Keep hands, feet, clothing and hair away from moving parts.
- Do not operate without driveline securely attached at both ends.
- Do not operate without driveline aligned that turns freely on driveline.

RT10047

7



8

SHIPPED WITHOUT OIL IN GEARBOX AND WITHOUT GREASE IN GREASE FITTINGS
 *CONSULT OWNER'S MANUAL FOR LUBRICATION AND OPERATING INSTRUCTIONS

9

⚠ CAUTION
 ONLY FOR TRACTOR UP TO 45HP

10

Max. 540 RPM

11

MAXIMUM HORSE POWER RATING 45HP

12

IMPORTANT NOTICE

BEFORE OPERATING THIS MACHINE, BE SURE TO CHECK THE FOLLOWING CHECK-POINTS HAVING FIRST STOPPED THE TRACTOR ENGINE, DISENGAGED THE P.T.O.

- Check oil levels (if necessary add SAE 90 EP oil)
- Grease the driveline spiders.
- Grease all marked points on the machine.
- Check to be sure the nuts/bolts are snug on those parts which are under the most stress (lines, blades, front linkage bolts, gear boxes, etc.)

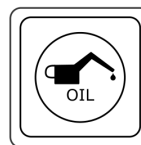
13

Model No.

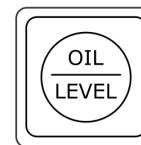
14

Serial No.

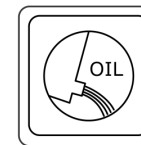
15



16



17



18

Warranty

LIMITED WARRANTY

Belco Resources Equipment warrants to the original purchaser of any new piece of machinery from Belco Resources Equipment, purchased from an authorized Belco Resources Equipment dealer, that the equipment be free from defects in material and workmanship for a period of one (1) year for non-commercial, state, and municipalities' use, ninety (90) days for commercial use from date of retail sale. Warranty for rental purposes is thirty (30) days. The obligation of Belco Resources Equipment to the purchaser under this warranty is limited to the repair or replacement of defective parts.

Replacement or repair parts installed in the equipment covered by this limited warranty are warranted for ninety (90) days from the date of purchase of such part or to the expiration of the applicable new equipment warranty period, whichever occurs later. Warranted parts shall be provided at no cost to the user at an authorized Belco Resources Equipment dealer during regular working hours. Belco Resources Equipment reserves the right to inspect any equipment or parts, which are claimed to have been defective in material or workmanship.

This limited warranty does not apply to and excludes wear items such as shear pins, tires, tubes knives, blades or other wear items. Oil or grease is not covered by this warranty.

All obligations of Belco Resources Equipment under this limited warranty shall be terminated if:

- Proper service is not performed on the machine.

- The machine is modified or altered in any way.

- The machine is being used or has been used for purposes other than those for which the machine was intended.

DISCLAIMER OF IMPLIED WARRANTIES & CONSEQUENTIAL DAMAGES

Belco Resources Equipment obligation under this limited warranty, to the extent allowed by law, is in lieu of all warranties, implied or expressed, including implied warranties of merchantability and fitness for a particular purpose and any liability for incidental and consequential damages with respect to the sale or use of the items warranted. Such incidental and consequential damages shall include but not be limited to: transportation charges other than normal freight charges; cost of installation other than cost approved by Belco Resources Equipment; duty; taxes; charges for normal service or adjustment; loss of crops or any other loss of income; rental of substitute equipment, expenses due to loss, damage, detention or delay in the delivery.

REGISTRATION

The online Warranty Registration must be completed in order to qualify for coverage on this Limited Warranty. Visit br-equipment.com, click on "Warranty Registration" and completely fill out the form to register the new piece of equipment.

Page left blank intentionally



401 Jeffreys Road
Rocky Mount, NC 27804
www.tarrivermfg.com

Tel: 252-822-7140
Fax: 252-787-5855
Sales@tarrivermfg.com