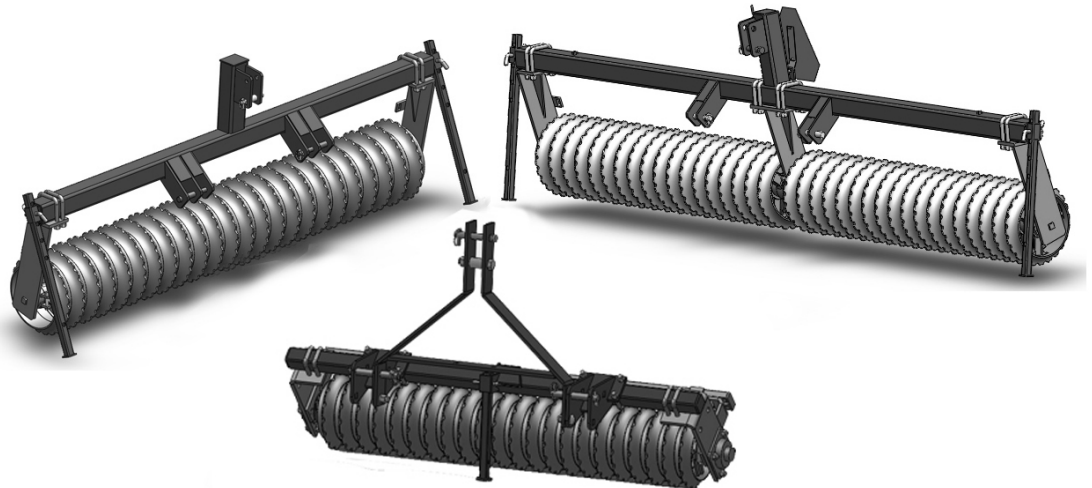


OPERATOR'S MANUAL

CULTIPACKER

CP-48L

CP-72L



TO THE DEALER:

Assembly and proper installation of this product is the responsibility of the Tar River Mfg. dealer. Read manual instructions and safety rules. Make sure all items on the Dealer's Pre-Delivery and Delivery Check Lists in the Owner's/Operator's Manual are completed before releasing equipment to the owner. The dealer must complete the Warranty Registration located on the Tar River Mfg. website.

TO THE OWNER:

Read this manual before operating your Tar River Mfg. equipment. The information presented will prepare you to do a better and safer job. Keep this manual handy for ready reference. Require all operators to read this manual carefully and become acquainted with all the adjustment and operating procedures before attempting to operate. Replacement manuals can be obtained from your Tar River dealer.

The equipment you have purchased has been carefully engineered and manufactured to provide dependable and satisfactory use. Like all mechanical products, it will require cleaning and upkeep. Lubricate the unit as specified. Observe all safety information in this manual and safety decals on the equipment.

For service, your authorized Tar River dealer has trained mechanics, genuine Tar River service parts, and the necessary tools and equipment to handle all your needs.

Use only genuine Tar River service parts. Substitute parts will void the warranty and may not meet standards required for safe and satisfactory operation. Record the model number and serial number of your equipment in the spaces provided:

Model: _____ Date of Purchase: _____

Serial Number: (see Safety Decal section for location) _____

Dealer Name: _____ Dealer Contact Information: _____

Provide this information to your dealer to obtain correct repair parts.

Throughout this manual, the term IMPORTANT is used to indicate that failure to observe can cause damage to equipment. The terms CAUTION, WARNING and DANGER are used in conjunction with the Safety-Alert Symbol, (a triangle with an exclamation mark), to indicate the degree of hazard for items of personal safety.



This Safety-Alert Symbol indicates a hazard and means ATTENTION! BECOME ALERT! YOUR SAFETY IS INVOLVED!

DANGER

Indicates an imminently hazardous situation that, if not avoided, will result in death or serious injury.



Indicates a potentially hazardous situation that, if not avoided, could result in death or serious injury, and includes hazards that are exposed when guards are removed.

WARNING

Indicates a potentially hazardous situation that, if not avoided, may result in minor or moderate injury.



CAUTION

Indicates that failure to observe can cause damage to equipment.

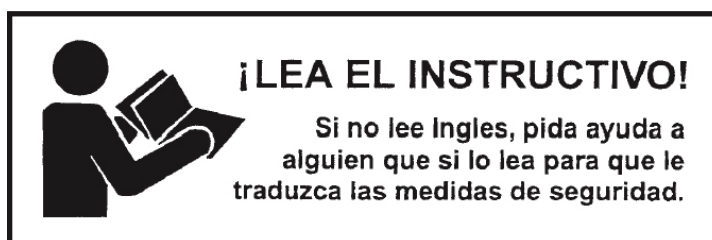
IMPORTANT

Indicates helpful information.

NOTE

TABLE OF CONTENTS

INTRODUCTION.....	ii
SPECIFICATIONS / GENERAL INFORMATION	1
SAFETY DECALS	3
SAFETY RULES.....	6
DEALER INSTRUCTIONS.....	9
OPERATION	12
OWNER SERVICE	16
PARTS CATALOG.....	17
OPTIONAL EQUIPMENT.....	25
BOLT SIZE AND BOLT TORQUE CHART.....	33
NOTES.....	34



SPECIFICATIONS

	CPC-48	CP-72C
3-Point Hitch	Limited Category 1	Limited Category 1
Working Width	48"	72"
Overall Width	56"	80"
Overall Height	32"	32"
Overall Length	19"	19"
Required Tractor HP Range	20-40 HP	20-40 HP
Approximate Operating Weight	310 lbs.	412 lbs.
Weight with Scraper Kit	348 lbs.	469 lbs.
Beam Type	2" X 2" X 1/4" Square Tube	2" X 2" X 1/4" Square Tube
Number of Cultipacker Wheels	22	32
Cultipacker Wheel Dia.	9 1/2"	9 1/2"
Implement Code	15	20
Implement Code with Scraper	17	23

	CP-48C	CP-72C
Pull-Type (Optional)		
Hitch Type	Clevis or 1 7/8" Ball Hitch	Clevis or 1 7/8" Ball Hitch
Working Width	48"	72"
Overall Width	68"	92"
Overall Height	20"	10"
Overall Length	75"	75"
Required Tractor HP Range	20-40 HP	20-40 HP
Approximate Operating Weight	375 lbs.	477 lbs.
Weight with Scraper Kit	413 lbs.	534 lbs.
Beam Type	2" X 2" X 1/4" Square Tube	2" X 2" X 1/4" Square Tube
Number of Cultipacker Wheels	22	32
Cultipacker Wheel Dia.	9 1/2"	9 1/2"
Transport Wheels	12"	12"

SPECIFICATIONS

	BCP1816	BCP2416	BCP3616
3-Point Hitch	Category 1 (Quick Hitch Compatible)	Category 1 & 2 (Quick Hitch Compatible)	Category 2 (Quick Hitch Compatible)
Working Width	72"	96"	144"
Overall Width	83"	107"	161"
Overall Height	45"	45"	45"
Overall Length	22"	22"	22"
Required Tractor HP Range	30-70 HP	30-125 HP	50-125 HP
Approximate Operating Weight	860 lbs.	1,068 lbs.	1,640 lbs.
Weight with Scraper Kit	902 lbs.	1,124 lbs.	1,724 lbs.
Beam Type	4" X 4" X 3/8" Square Tube	4" X 4" X 3/8" Square Tube	4" X 4" X 3/8" Square Tube
Number of Cultipacker Wheels	18	24	36
Cultipacker Wheel Dia.	16"	16"	16"
Implement Code	40	50	77
Implement Code with Scraper	43	53	81

GENERAL INFORMATION

The purpose of this manual is to assist you in operating and maintaining your Cultipacker. Read it carefully. It furnishes information and instructions that will help you achieve years of dependable performance.

These instructions have been compiled from field experience and engineering data. Some information may be general in nature, due to unknown and varying operating conditions. However, through experience and these instructions, you should be able to develop procedures suitable to your situation.

The illustrations and data used in this manual were current at the time of printing. However, due to possible inline production changes, your machine may vary slightly in detail. We reserve the right to redesign and change the machines as may be necessary without notification.

Throughout this manual, references are made to right and left direction. These are determined by standing behind the tractor facing the direction of forward travel.

SAFETY & INSTRUCTIONAL DECALS

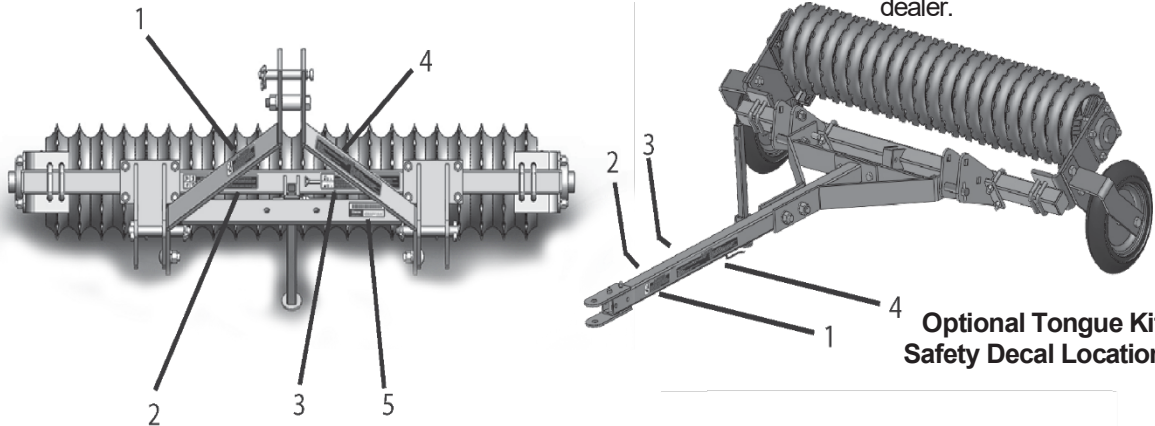
ATTENTION! BECOME ALERT! YOUR SAFETY IS INVOLVED!

FAILURE TO FOLLOW THESE INSTRUCTIONS COULD RESULT IN SERIOUS INJURY OR DEATH

Replace Decals Immediately If Damaged!

CPC-48, CPC-72

Check that all safety decals are installed and in good condition. Replacement Part numbers are listed below. Use this diagram to affix new safety decals. Decals can be obtained from your local dealer.



**Figure 1. CPC-48, CPC-72
Safety Decal Locations**

**Optional Tongue Kit
Safety Decal Locations**

WARNING

To avoid serious injury or death from falling implement hazard:

- Keep hands and feet from under raised implement.
- Always put machine in the lowered position and chock to prevent movement when disconnecting machine for maintenance, repair or storage.

5TL16318B

REF. #1
L16318B

REF. #5
SERIAL NUMBER

WARNING

To avoid serious injury or death from crushing or pinching hazards:

- Do not put hands, fingers, feet and other body parts between tractor and implement.
- Operate tractor controls from tractor seat only.
- Do not stand between tractor and implement when tractor is in gear.
- Make sure parking brake is engaged before going between tractor and implement.
- Stand clear of machine when in operation or being raised or lowered.

5TL16318A

REF. #2
L16318A

WARNING

To avoid serious injury or death:

- Do not allow others to ride on the machine or tractor.
- Park and chock machine so it will not roll and/or move when disconnecting from tractor.
- Never go underneath equipment (lowered to the ground or raised) unless it is properly blocked and secured.
- Never place any part of the body underneath equipment or between movable parts even when the engine has been turned off.
- Be sure that everyone is standing clear before operating the machine.
- Do not operate or transport at high speeds.
- Do not operate or transport on steep slopes.

5TL16318D

REF. #3
L16318D

CAUTION

To avoid serious injury:

- Read Operator's Manual before operating, servicing or repairing equipment. Follow all safety rules and instructions. Manuals are available from your selling dealer.
- Never allow riders.
- Keep bystanders away from equipment during operation.
- Operate from power unit seat only.
- Do not operate on public roadway.
- Stop engine, remove key and set brake before dismounting power unit.
- Never allow children or untrained persons to operate equipment.
- Do not operate towed or semi-mounted units over 20MPH.
- Stand clear of machine when in operation or when it is being raised or lowered.

5TL16318C

3 Safety Decals

SAFETY & INSTRUCTIONAL DECALS

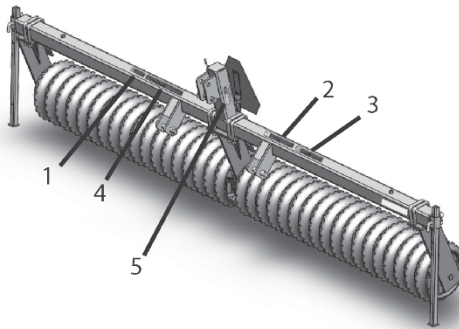
ATTENTION! BECOME ALERT! YOUR SAFETY IS INVOLVED!

FAILURE TO FOLLOW THESE INSTRUCTIONS COULD RESULT IN SERIOUS INJURY OR DEATH

Replace Decals Immediately If Damaged!

BCP1816, BCP2416, BCP3616

Check that all safety decals are installed and in good condition. Replacement Part numbers are listed below. Use this diagram to affix new safety decals. Decals can be obtained from your local dealer.



**Figure 2 BCP1816, BCP2416, BCP3616
Safety Decal Locations**

⚠ WARNING
To avoid serious injury or death from falling implement hazard:

- Keep hands and feet from under raised implement.
- Always put machine in the lowered position and chock to prevent movement when disconnecting machine for maintenance, repair or storage.

STL16318B

REF. #1
5TL16318B

REF. #5
SERIAL NUMBER

⚠ WARNING
To avoid serious injury or death from crushing or pinching hazards:

- Do not put hands, fingers, feet and other body parts between tractor and implement.
- Operate tractor controls from tractor seat only.
- Do not stand between tractor and implement when tractor is in gear.
- Make sure parking brake is engaged before going between tractor and implement.
- Stand clear of machine when in operation or being raised or lowered.

STL16318A

REF. #2
.16318A

⚠ WARNING
To avoid serious injury or death:

- Do not allow others to ride on the machine or tractor.
- Park and chock machine so it will not roll and/or move when disconnecting from tractor.
- Never go underneath equipment (lowered to the ground or raised) unless it is properly blocked and secured.
- Never place any part of the body underneath equipment or between movable parts even when the engine has been turned off.
- Be sure that everyone is standing clear before operating the machine.
- Do not operate or transport at high speeds.
- Do not operate or transport on steep slopes.

STL16318D

REF. #3
.16318D

⚠ CAUTION
To avoid serious injury:

- Read Operator's Manual before operating, servicing or repairing equipment. Follow all safety rules and instructions. Manuals are available from your selling dealer.
- Never allow riders.
- Keep bystanders away from equipment during operation.
- Operate from power unit seat only.
- Do not operate on public roadway.
- Stop engine, remove key and set brake before dismounting power unit.
- Never allow children or untrained persons to operate equipment.
- Do not operate towed or semi-mounted units over 20MPH.
- Stand clear of machine when in operation or when it is being raised or lowered.

STL16318C

REF. #4 16318C

REFLECTORS

ATTENTION! BECOME ALERT! YOUR SAFETY IS INVOLVED!

FAILURE TO FOLLOW THESE INSTRUCTIONS COULD RESULT IN SERIOUS INJURY OR DEATH

Replace Labels Immediately If Damaged!

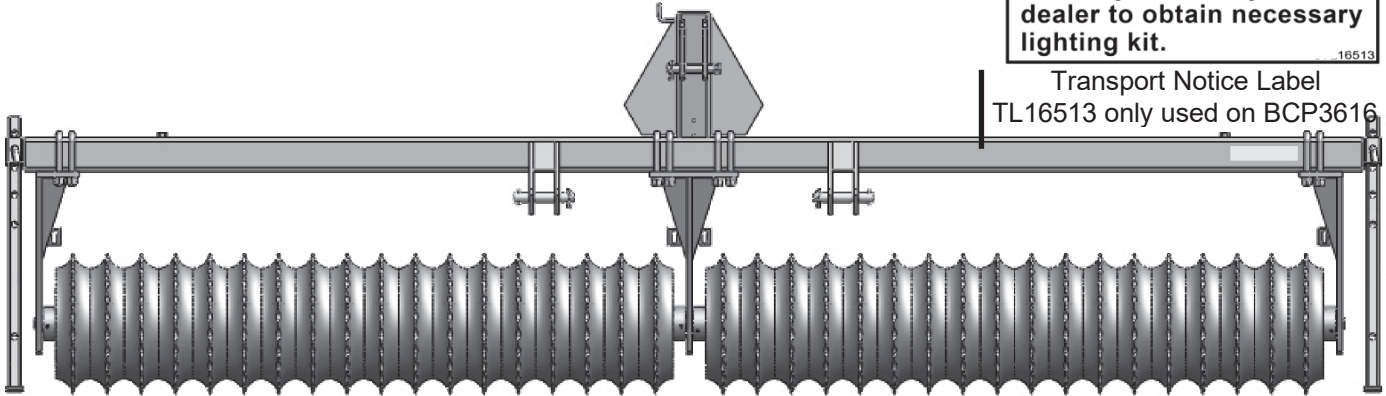
Check that all reflectors are installed and in good condition.

BCP2416, BCP3616 Reflector Decals

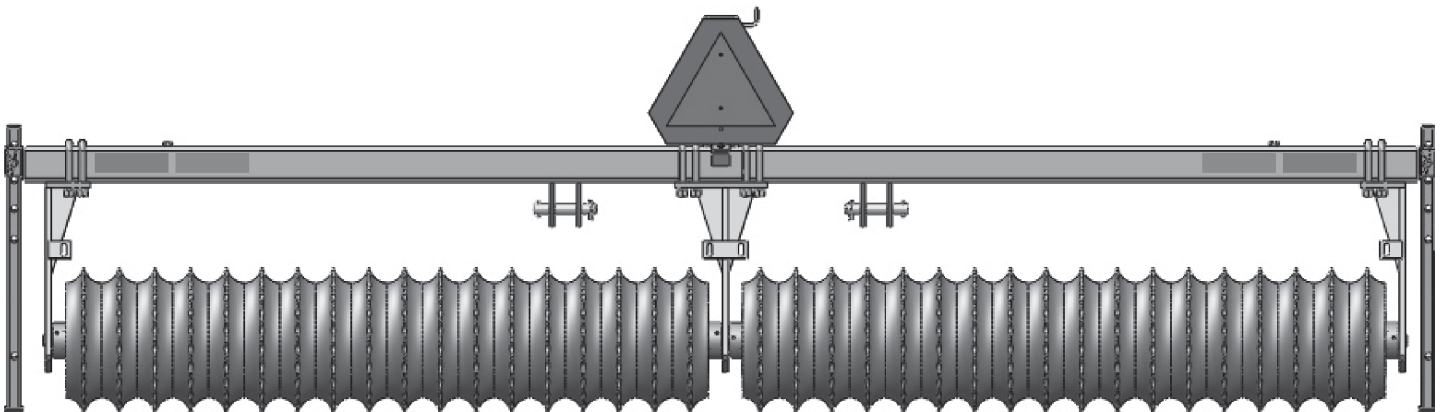
NOTICE
If used or transported on roadway, contact your dealer to obtain necessary lighting kit.

16513

Transport Notice Label
TL16513 only used on BCP3616



9" YELLOW REFLECTOR
SB101379
Figure 3.



9" RED-ORANGE DECALS
15361
(Only on the inside)

9" RED REFLECTORS
SB101379
Figure 4.

5 Safety Decals



SAFETY RULES



ATTENTION! BECOME ALERT! YOUR SAFETY IS INVOLVED!

Safety is a primary concern in the design and manufacture of our products. Unfortunately, our efforts to provide safe equipment can be wiped out by an operator's single careless act.

In addition to the design and configuration of equipment, hazard control and accident prevention are dependent upon the awareness, concern, judgement, and proper training of personnel involved in the operation, transport, maintenance, and storage of equipment.

It has been said "The best safety device is an informed, careful operator." We ask you to be that kind of operator.

TRAINING

- Safety instructions are important! Read all attachment and power unit manuals; follow all safety rules and safety decal information. (Replacement manuals are available from selling dealer.) Failure to follow instructions or safety rules can result in serious injury or death.
- If you do not understand any part of this manual and need assistance, see your dealer.
- Operators must be instructed in and be capable of the safe operation of the equipment, its attachments, and all controls. Do not allow anyone to operate this equipment without proper instructions.
- Never allow children or untrained persons to operate equipment.
- Train all new personnel and review instruction's frequently with existing workers. A person who has not read and understood all operating and safety instructions is not qualified to operate the machine. An untrained operator exposes himself and bystanders to possible serious injury or death.

PREPARATION

- Always wear relatively tight and belted clothing to avoid getting caught in moving parts.

Wear sturdy, rough-soled work shoes and protective equipment for eyes, hair, hands, hearing, and head; and respirator or filter mask where appropriate.

- Make sure attachment is properly secured, adjusted, and in good operating condition.
- Power unit must be equipped with ROPS or ROPS cab and seat belt. Keep seat belt securely fastened. Falling off power unit can result in death from being run over or crushed. Always keep the foldable ROPS system in "locked up" position.
- A minimum 20% of tractor and equipment weight must be on the tractor front wheels when attachments are in transport position. Without this weight, tractor could tip over, causing personal injury or death. The weight may be attained with a loader, ballast in tires or front tractor weights. Weigh the tractor and equipment. Do not estimate. Implement Code given in Specifications Section, page #1, is used to determine appropriate ballast. See your tractor operator's manual for required number of weights to use for your specified Implement Code.

TRANSPORTATION

- Always comply with all state and local laws governing highway safety and lighting and marking requirements.
- Never allow riders on power unit or attachment.
- Do not operate or transport on steep slopes.
- Use extreme care and reduce ground speed on slopes and rough terrain.
- Do not operate or transport equipment while under the influence of alcohol or drugs. Consult your doctor about operating this machine while taking prescription medications.

Safety Rules 6



SAFETY RULES



ATTENTION! BECOME ALERT! YOUR SAFETY IS INVOLVED!

OPERATION

- Never go underneath equipment (lowered to the ground or raised) unless it is properly blocked and secured. Never place any part of the body underneath equipment or between moveable parts even when the engine has been turned off. Hydraulic system leak down, hydraulic system failures, mechanical failures, or movement of control levers can cause equipment to drop or rotate unexpectedly and cause severe injury or death.
- Always comply with all state and local laws governing highway safety and lighting and marking requirements.
- Operate only in daylight or good artificial light.
- Keep bystanders away from equipment.
- Keep hands, feet, hair, and clothing away from equipment while engine is running. Stay clear of all moving parts.
- Power unit must be equipped with ROPS or ROPS cab and seat belt. Keep seat belt securely fastened. Falling off power unit can result in death from being run over or crushed. Always keep the foldable ROPS system in “locked up” position.
- Never allow riders on power unit or attachment.
- Always sit in power unit seat when operating controls or starting engine. Securely fasten seat belt, place transmission in neutral, engage brake, and ensure all other controls are disengaged before starting power unit engine.
- Look down and to the rear and make sure area is clear before operating in reverse.
- Use extreme care when working close to fences, ditches, other obstructions, or on hillsides.
- Do not operate or transport on steep slopes.

- Do not stop, start, or change directions suddenly

on slopes.

- Always operate down and never across the slopes.
- Use extreme care and reduce ground speed on slopes and rough terrain.
- Keep alert and watch the front as well as the rear when operating.
- When making pitch and roll angle adjustments, be careful to keep hands and feet clear of sliding parts and possible pinch points.
- Stop power unit and equipment immediately upon striking an obstruction. Turn off engine, remove key, inspect, and repair any damage before resuming operation.
- Before leaving operator’s seat, lower lift arms and put attachment on the ground. Engage brake, stop engine, remove key, and remove seat belt.

MAINTENANCE

- Always wear relatively tight and belted clothing to avoid getting caught in moving parts. Wear sturdy, rough-soled work shoes and protective equipment for eyes, hair, hands, hearing, and head; and respirator or filter mask where appropriate.
- Never go underneath equipment (lowered to the ground or raised) unless it is properly blocked and secured. Never place any part of the body underneath equipment or between moveable parts even when the engine has been turned off. Hydraulic system leak down, hydraulic system failures, mechanical failures, or movement of control levers can cause equipment to drop or rotate unexpectedly and cause severe injury or death.

7 Safety Rules



SAFETY RULES



ATTENTION! BECOME ALERT! YOUR SAFETY IS INVOLVED!

MAINTENANCE (cont'd)

- When performing maintenance or repairs make sure the equipment is in the lowered position and properly blocked and secured to prevent rolling. Failure to do so can cause serious injury or death.
- Make sure attachment is properly secured, adjusted, and in good operating condition.
- Before leaving operator's seat, lower lift arms and put attachment on the ground. Engage brake, stop engine, remove key, and remove seat belt.
- Never perform service or maintenance with engine running.
- Keep all persons away from operator control

area while performing adjustments, service, or maintenance.

- Tighten all bolts, nuts, and screws to torque chart specifications, page 33. Check that the land plane is properly attached to the power unit and that the equipment is in a safe condition before putting unit into service.

STORAGE

- Block equipment securely for storage.
- Always park on even level surface
- Keep children and bystanders away from storage area.

DEALER INSTRUCTIONS

CPC-48, CPC-72 Assembly

1. Remove the A-Frame Figure 5 (Ref. 1), frame with roller assembly attached (Ref. 2, roller assembly not shown) and parking stands (Ref. 7) from packaging.
2. Support frame off the ground using a suitable hoist or lifting apparatus.
3. Place parking stand (Ref. 7) into the frame and secure with pin (Ref. 8).
4. Insert A-Frame weldment between the inside hitch lugs on the frame using hitch pins (Ref. 3) reinsert lynch pins.
5. Use two carriage bolts 5/8" x 1 3/4" GR. 2 (Ref. 4) to attach the lower portion of the A-Frame to the lowest square hole in the hitch lugs.
6. Make sure to keep the hitch pins moving freely when tightening the carriage bolts. This will help to remove and reinsert hitch pins when attaching the Cultipacker to the tractor.
7. Tighten each nut to the torque chart on page 33.

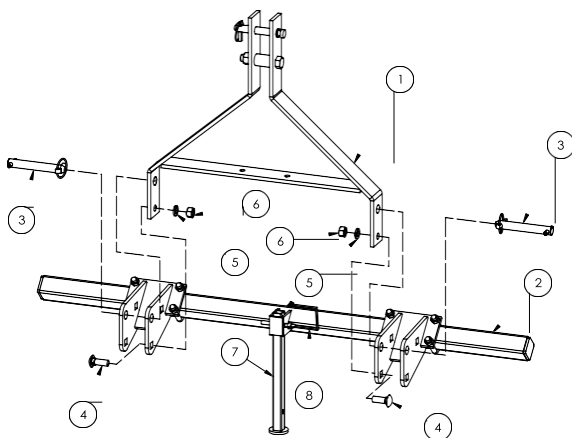


Figure 5. CPC-48, CPC-72

BCP1816, BCP2416 Assembly

The BCP1816 and BCP2416 both come completely assembled from the factory.

1. Remove the Cultipacker from packaging.
2. Place Cultipacker on a level surface.
3. Tighten each nut to the torque chart on page 33.

Assembly

BCP3616 Assembly

1. Remove the frame with roller assembly attached Figure 6 (Ref. 1), roller assembly (Ref. 4), hanger (Ref. 5) and parking stands (Ref. 2) from packaging.
2. Support frame off the ground using a suitable hoist or lifting apparatus.
3. Place both parking stands (Ref. 2) into the frame and secure with pins (Ref. 3).
4. Slide roller assembly (Ref. 4) onto the center hanger (Ref. 9).
5. Mount the hanger (Ref. 5) into the roller assembly (Ref. 4) and onto the frame assembly (Ref. 1) using front 3/4" U- bolts supplied (Ref. 6), 3/4" lock washers (Ref. 7) and 3/4" hex nuts (Ref. 8).
6. Tighten each nut to the torque chart on page 33.

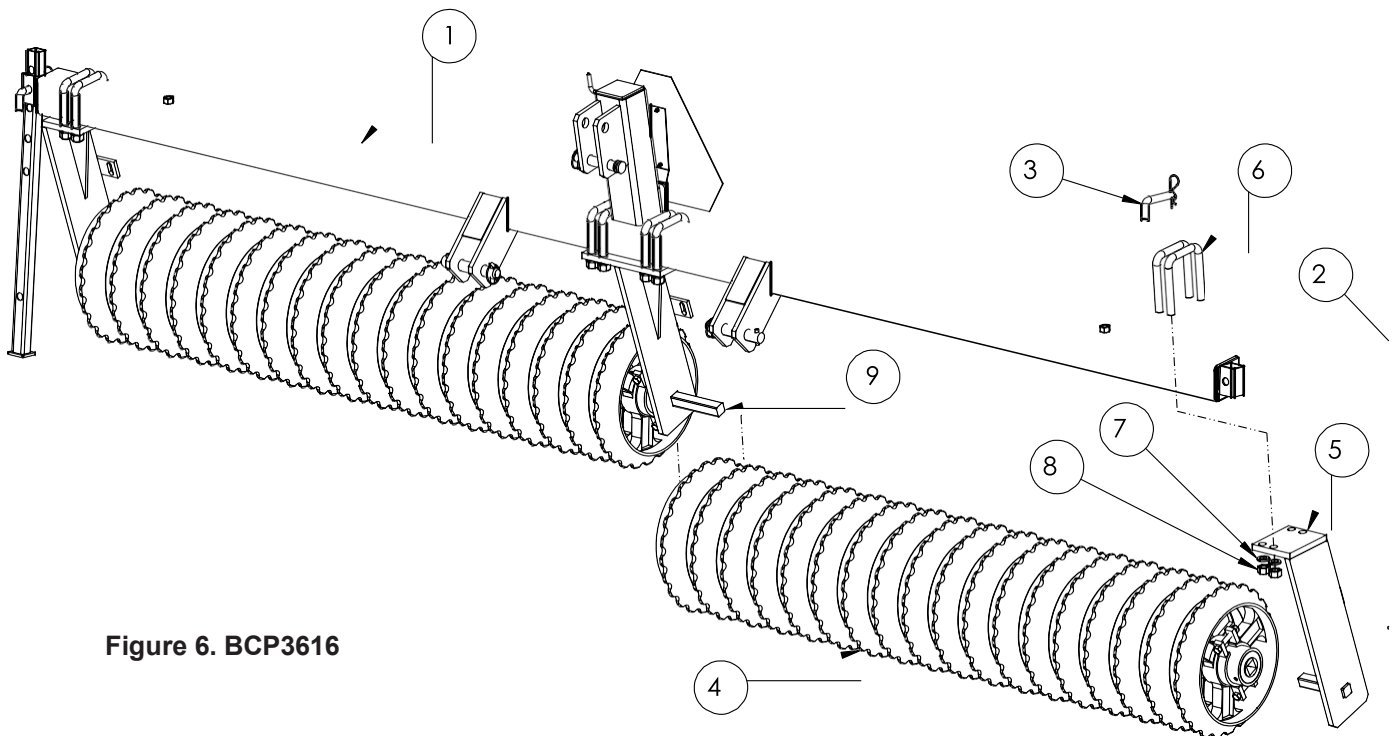


Figure 6. BCP3616

Dealer Checklist

(Dealer's Responsibility)

Inspect the equipment thoroughly after assembly to be certain it is set up properly before delivering it to the customer. The following check list is a reminder of points to inspect.

Check off each item if it is found satisfactory or after proper adjustment is made.

Check that all safety decals are installed and in good condition. Replace if damaged.

Check all bolts to be sure they are tight.

Check that all cotter pins and safety pins are installed properly.

It is important for the dealer to visually check and make sure all parts are intact prior to delivery to customer.

Show customer the safe, proper way to mount, dismount, and store this equipment.

For mounted units, add ballast in front tires, and/or front tractor weight to enhance front end stability. A minimum 20% of tractor and equipment gross weight must be on front tractor wheels. When adding weight to attain 20% of tractor and equipment weight on front tractor wheels, you must not exceed the ROPS weight certification. Weigh the tractor and equipment. Do not estimate!

Show customer how to make any adjustments.

Present Owner's/Operator's Manual and request that customer and all operators read it before operating equipment. Point out the manual safety rules, explain their meanings and emphasize the increased safety hazards that exist when safety rules are not followed.

Point out the safety decals. Explain the meaning and the need to keep them in place and in good condition. Emphasize the increased safety hazards when instructions are not followed.

Explain to customer the potential crushing hazards of going underneath raised equipment. Instruct customer that service work does not require going underneath unit and never to do so.

Complete the Warranty Registration located on the Tar River website.

11 Dealer Instructions

OPERATION

Safety is a primary concern in the design and manufacture of our products. Unfortunately, our efforts to provide safe equipment can be wiped out by an operator's single careless act.

In addition to the design and configuration of equipment, hazard control and accident prevention are dependent upon the awareness, concern, the judgement, and proper training of personnel involved in the operation, transport, maintenance, and storage of equipment.

It has been said "The best safety device is an informed, careful operator." Please be that kind of operator.

The operator is responsible for the safe operation of this equipment. The person operating this machine must be professionally trained. Operators should be familiar with the equipment, the tractor and all safety practices before starting operation. Read the safety rules and safety decals on pages 5-7.

WARNING

- Power unit must be equipped with ROPS or ROPS cab and seat belt. Keep seat belt securely fastened. Falling off power unit can result in death from being run over or crushed. Keep the foldable "ROPS" system in the locked-up position at all times.
- Never allow children or untrained persons to operate equipment.
- Keep bystanders away from equipment.
- NEVER GO UNDERNEATH EQUIPMENT. Never place any part of the body underneath equipment or between moveable parts even when the engine has been turned off. Hydraulic system leak down, hydraulic system failures, mechanical failures, or movement of control

levers can cause equipment to drop or rotate unexpectedly and cause severe injury or death.

- Service work does not require going underneath.
- Read Manual for service instructions or have service performed by a qualified dealer.
- Stop tractor and implement immediately upon striking an obstruction. Turn off engine, remove key, inspect, and repair any damage before resuming operation.
- Always wear relatively tight and belted clothing to avoid entanglement in moving parts. Wear sturdy, rough-soled work shoes and protective equipment for eyes, hair, hands, hearing and head.

Owner/Operator Pre-Operation Checklist (Owner's/Operator's Responsibility)

___ Review and follow all safety rules and safety decal instructions on page 6 through page 8.

___ Check that equipment is properly and securely attached to tractor.

___ Check that all safety decals are installed and in good condition. Replace if damaged.

___ Check that all hardware is installed properly and secured.

___ Do not allow riders.

___ Make sure tractor ROPS or ROPS CAB and seat belt are in good condition. Keep seat belt securely fastened during operation.

___ After day of operation, check all hardware. Retighten if needed. Please see Bolt Torque Chart (page 33) for proper torque information.

Operation 12

Connecting CPC-48, CPC-72, BCP1816 Cultipacker to Tractor

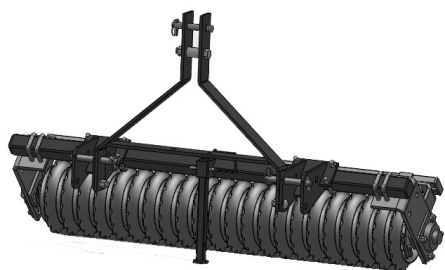
The Cultipacker is compatible with tractors equipped with Category 1, 3-point hitch systems that use side-swing type lower lift arms. The Cultipacker will also fit tractors equipped with a Category 1 Quick Hitch system.

Category 1 Standard 3-Point Hook-up

1. Attach the tractor's lower lift arms to the Cultipacker on the lower hitch pins. Re-install the lynch pins.
2. Attach the tractor's top link to the Cultipacker A-Frame, using the heavy-duty top link pin and lynch pin supplied, with the top link to the upper top link pin hole.

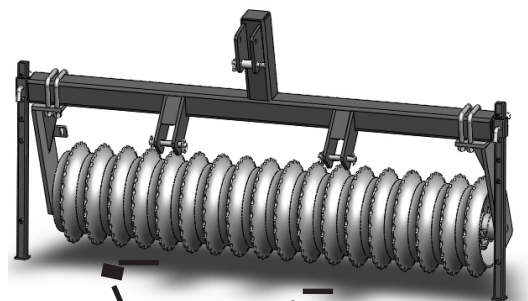
Category 1 Quick Hitch (Figure 7 and 8)

1. Connect the tractor's Quick Hitch by guiding the top hook through the lower top link pin with bushings.
2. Install bushing set (sold separately part #15638) over the mounting pin supplied with Cultipacker. Re-install lynch pins.
3. Upper bushing should already be be installed to the top link.



Lower Quick Hitch bushings
(Sold separately)

**Figure 7. Category 1 Quick Hitch Set-up
for CPC-48 and CPC-72**



Lower Quick Hitch bushings
(Sold separately)

**Figure 8. Category 1 Quick Hitch Set-up
for BCP1816**

Connecting BCP2416 Cultipacker to Tractor

The Cultipacker is compatible with tractors equipped with Category 1 and Category 2, 3-point hitch systems that use side-swing type lower lift arms. The Cultipacker will also fit tractors equipped with a Category 1 or Category 2 Quick Hitch system.

Category 1 Standard 3-Point Hook-up

1. Attach the tractor's lower lift arms to the Cultipacker on the inside lower hitch pins. Re-install the lynch pins.
2. Attach the tractor's top link to the Cultipacker A-Frame, using the heavy-duty top link pin and lynch pin supplied, with the top link to the upper top link pin hole.

Category 1 Quick Hitch (Figure 9)

1. Connect the tractor's Quick Hitch by guiding the top hook through the lower top link pin with bushings.
2. Install bushing set (sold separately part #15638) over the inside mounting pin supplied with Cultipacker. Re-install lynch pins.
3. Upper bushing should already be be installed to the top link.

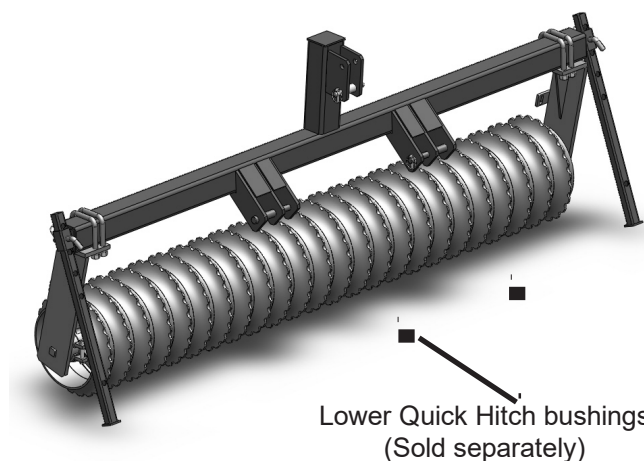


Figure 9. Category 1 Quick Hitch Set-up

Category 2 Standard 3-Point Hook-up

1. Attach the tractor's lower lift arms to the Cultipacker on the lower outside hitch pins. Re-install the lynch pins.
2. Attach the tractor's top link to the Cultipacker's mast, using the heavy-duty top link pin and lynch pin supplied, with the top link to the upper top link pin hole.

Category 2 Quick Hitch (Figure 10)

1. Slide lower sleeve (sold separately part #15638) over the outside mounting pin supplied with Cultipacker. Re-install lynch pins.
2. Slide upper sleeve over the heavy-duty top link pin supplied with top link. Reinstall lynch pin.
3. Connect the tractor's Quick Hitch to the Cultipacker through the upper set of holes.

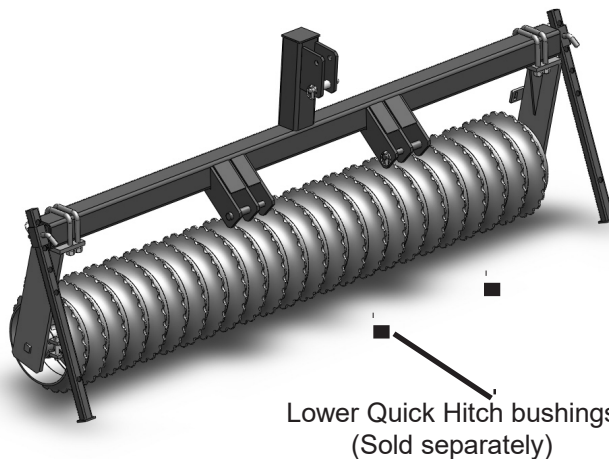


Figure 10. Category 2 Quick Hitch Set-up

Operation 14

Connecting BCP3616 Cultipacker to Tractor

Category 2 Standard 3-Point Hook-up

1. Attach the tractor's lower lift arms to the Cultipacker through the hitch pins. Re-install the lynch pins.
2. Attach the tractor's top link to the Cultipacker's mast, using the heavy-duty top link pin and lynch pin supplied, with the top link to the upper top link pin hole.

Category 2 Quick Hitch (Figure 11)

1. Slide lower sleeve (sold separately part #15638) over the mounting pin supplied with

Cultipacker. Re-install lynch pins.

2. Slide upper sleeve over the heavy-duty top link pin supplied with top link. Reinstall lynch pin.

3. Connect the tractor's Quick Hitch to the Cultipacker through the upper set of holes.

Adjusting Cultipacker

Adjust the 3-point top link so that Cultipacker is level front to rear. In most cases this will give the desired results.

Adjust right to left level by adjusting the lower lift arm on tractor.

Operation

Once at the work site make sure parking stands are in the storage position. Start by lowering the unit until it is resting on the soil. Do not go over 7mph. Doing so can cause bouncing prohibiting the unit from making proper seed to soil contact. If the unit is bouncing, slow down until the unit is rolling smoothly.

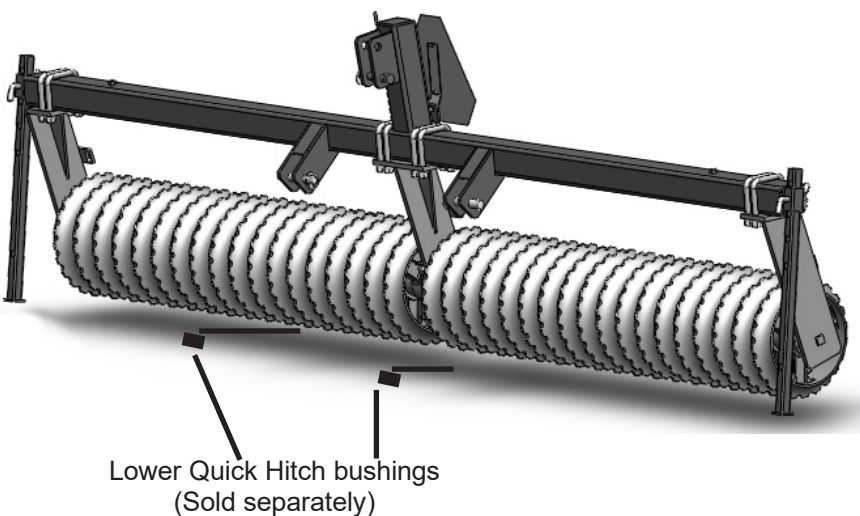


Figure 11. Category 2 Quick Hitch Set-up

Troubleshooting

PROBLEM	POSSIBLE CAUSE	POSSIBLE REMEDY
Mud or dirt building up on roller assembly	Too much moisture in the soil	Add optional scraper kit
		Wait until soil has a better moisture content
Cultipacker wheel will not spin	Bearing is seized	Replace bearing

OWNER SERVICE

WARNING

- NEVER GO UNDERNEATH EQUIPMENT. Never place any part of the body underneath equipment or between moveable parts even when the engine has been turned off. Hydraulic system leak down, hydraulic system failures, mechanical failures or movement of control levers can cause equipment to drop or rotate unexpectedly and cause severe injury or death.
- Service work does not require going underneath.

WARNING

- Read Manual for service instructions or have service performed by a qualified dealer.

CAUTION

The information in this section is written for operators who possess basic mechanical skills. If you need help, your dealer has trained service technicians available. For your protection read and follow the safety information in this manual.

Owner should check and tighten all hardware after the first hour of operation. The break in stage of your new Cultipacker can cause minimal loosening of hardware. Please see Bolt Torque Chart (page 33) for proper torque information.

CPC-48 and CPC-72 come with greaseable bearings. These bearings require lubrication every 8 working hours.

WARNING

- Keep all persons away from operator control area while performing adjustments, service, or maintenance.
- Before dismounting the unit or performing any service or maintenance, follow these steps:

disengage power to equipment, lower the 3-point hitch and all raised components to the ground, operate valve levers to release any hydraulic pressure, set parking brake, stop engine, remove the key, and unfasten seat belt.

- Always wear relatively tight and belted clothing to avoid entanglement in moving parts. Wear sturdy, rough-soled work shoes and protective equipment for eyes, hair, hands, hearing and head.

CAUTION

Storage

When storing your Cultipacker make sure parking stands are in place, the unit is placed on level ground and clear of any obstructions. Use caution when disconnecting the Cultipacker from the tractor.

Owner Service 16

PARTS CATALOG

CPC-48, CPC-72

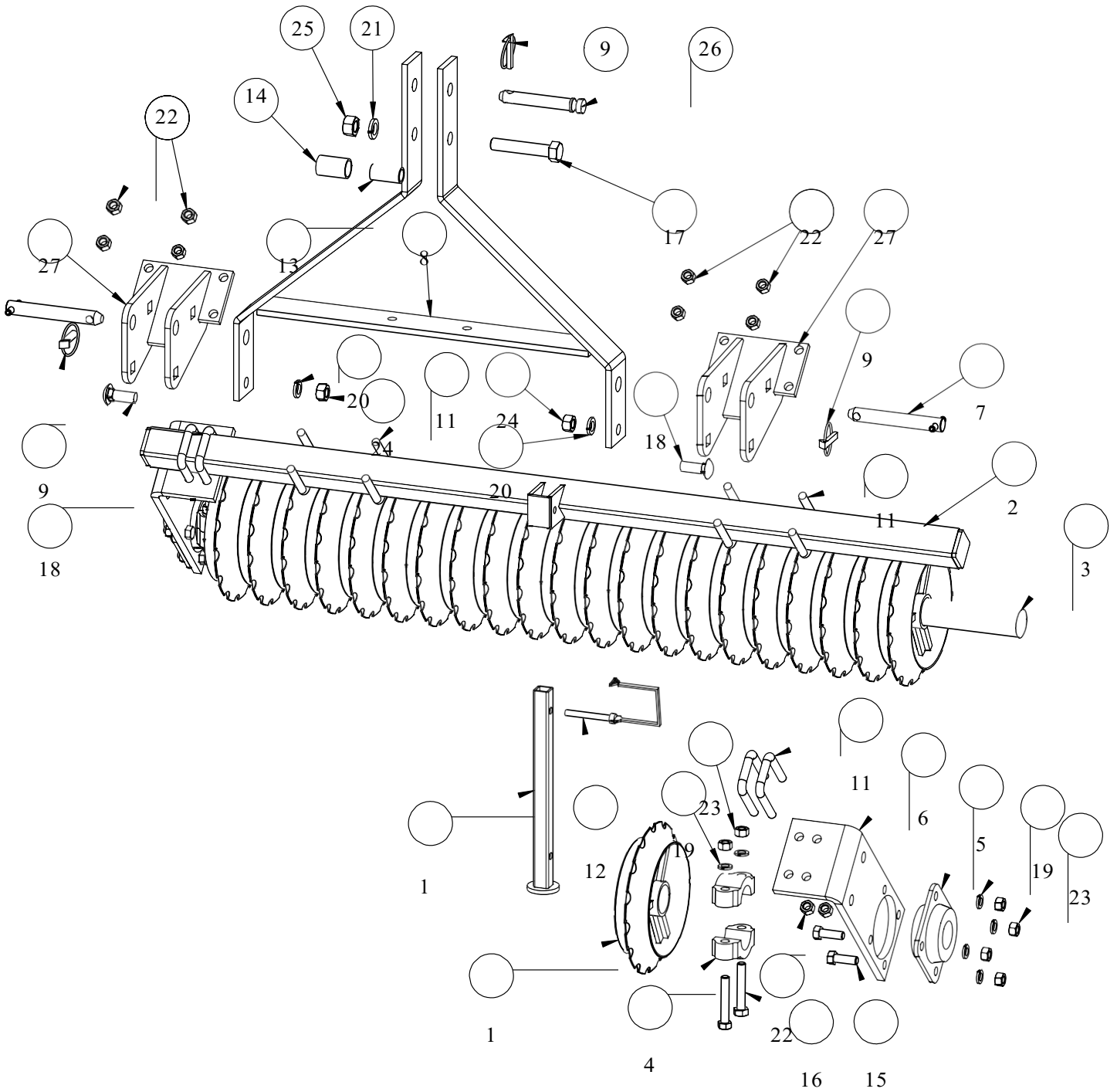


Figure 12.

PARTS CATALOG

CPC-48, CPC-72

Position	Part Number	...	Description	Qty.
1	15860		CULTIPACKER WHEEL, 9 1/2"	*MS
2	16339		TOOLBAR, CPC-48	1
	16340		TOOLBAR, CPC-72	1
3	16342		AXLE, CPC-48	1
	16343		AXLE, CPC-72	1
4	15861		AXLE CLAMP, HALF	4
5	16345		BEARING, 1 3/4" ROUND	2
6	16344		HANGER	2
7	10684		CAT 1 HITCH PIN	2
8	16341		A-FRAME	1
9	VP252		LYNCH PIN	3
10	16346		PARKING STAND	1
11	11138		2" X 2" U-BOLT	8
12	16219		PIN	1
13	15209		CAT 1 BUSHING, 1 15/16"	1
14	15210		CAT 2 BUSHING, 1 15/16"	1
15	BS1/2-13.11/2		BOLT- 1/2"-13 X 1 1/2"	8
16	BS1/2-13.3		BOLT- 1/2"-13 X 3" GR. 5	4
17	9859		BOLT- 3/4"-10 X 4" GR. 5	1
18	15589		CARRIAGE BOLT- 5/8"-11 X 1 3/4" GR.2	2
19	LW1/2		LOCK WASHER- 1/2"	12
20	LW5/8		LOCK WASHER- 5/8"	2
21	LW3/4		LOCK WASHER- 3/4"	1
22	FLNS1/2-13		FLANGE LOCK NUT- 1/2"	16
23	NS1/2-13		NUT- 1/2"-13	12
24	NS5/8-11		NUT- 5/8"-11	2
25	NS3/4-10		NUT- 3/4"-10	1
26	15206		CAT 1 TOP LINK PIN	1
27	16358		HITCH LUG WELDMENT	2
	16318		SAFETY WARNING DECAL SHEET (see page 2)	1

*MS = Model Specific

PARTS CATALOG BCP1816

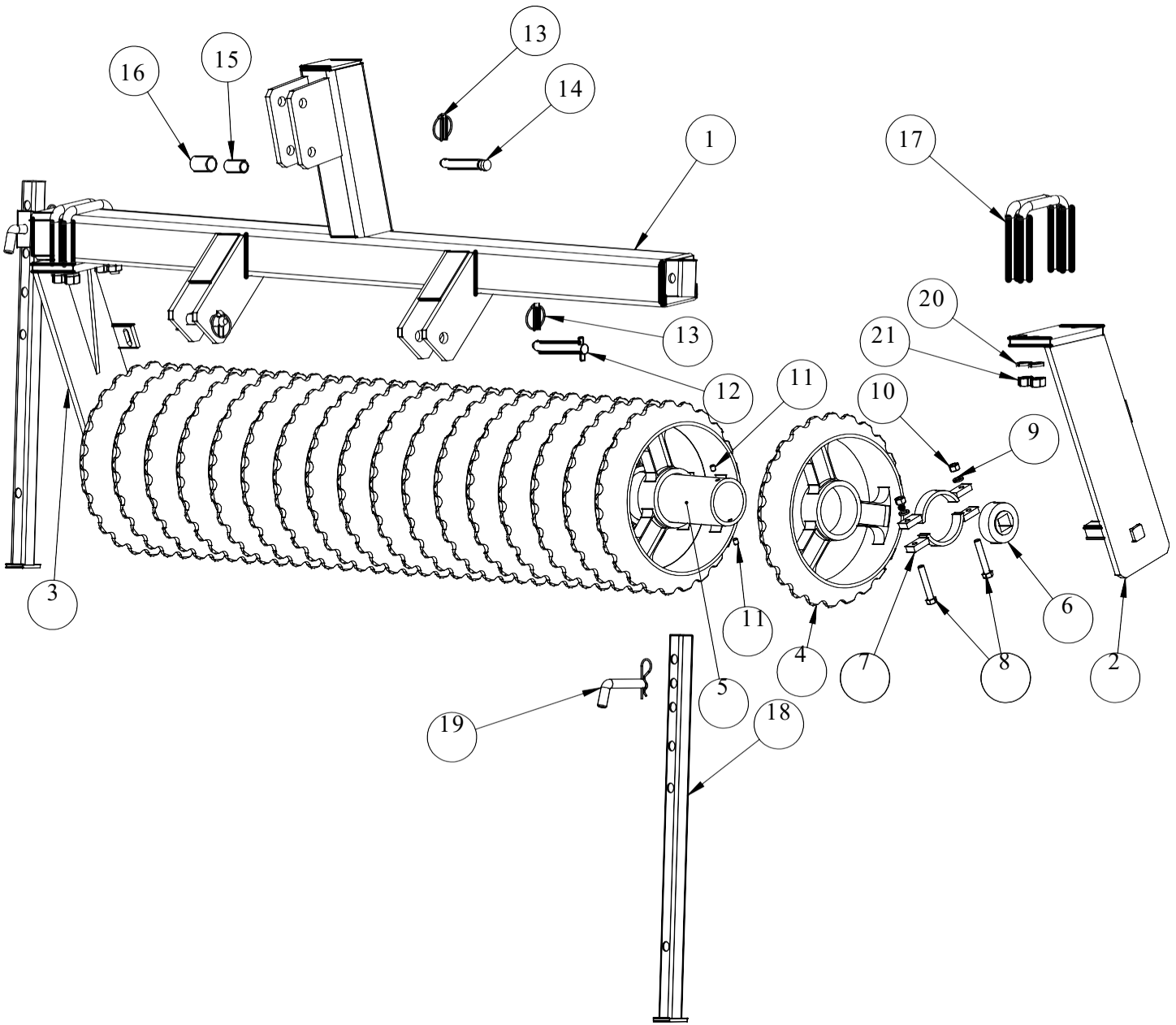


Figure 13.

PARTS CATALOG

BCP1816

Position	Part Number	...	Description	Qty.
1	14770		FRAME	1
2	14907		CULTIPACKER GANG HANGER (LH)	1
3	14908		CULTIPACKER GANG HANGER (RH)	1
4	14971		CULTIPACKER WHEEL	18
5	15894		GANG AXLE PIPE 75"	1
6	T-602		BEARING, 1 1/8 "	2
7	15896		AXLE CLAMP, HALF	4
8	T-738		BOLT- 1/2"-13 X 3" GR. 5	4
9	LW1/2		LOCK WASHER- 1/2"	4
10	NS1/2		NUT- 1/2"	4
11	SSS3/8-13.1/2		SOCKET SET SCREW, 3/8" X 1/2"	4
12	10684		CAT 1 HITCH PIN	2
13	VP252		LYNCH PIN	3
14	15206		CAT 1 TOP LINK PIN	1
15	15209		CAT 1 BUSHING, 1 15/16"	1
16	15210		CAT 2 BUSHING, 1 15/16"	1
17	11971		4" x 4" U-BOLT	4
18	11037		PARKING STAND	2
19	9690		PARKING STAND PIN	2
20	LW3/4		LOCK WASHER- 3/4"	8
21	NS3/4-10		NUT- 3/4"	8

PARTS CATALOG

BCP2416

Position	Part Number	...	Description	Qty.
1	14771		FRAME	1
2	14908		CULTIPACKER GANG HANGER (RH)	1
3	14907		CULTIPACKER GANG HANGER (LH)	1
4	15891		GANG AXLE PIPE 99"	1
5	T-602		BEARING, 1 1/8"	2
6	14971		CULTIPACKER WHEEL	24
7	15896		AXLE CLAMP, HALF	4
8	11971		4" x 4" U-BOLT	4
9	15206		CAT 1 TOP LINK PIN	1
10	15209		CAT 1 BUSHING, 1 15/16"	1
11	15210		CAT 2 BUSHING, 1 15/16"	1
12	9690		PARKING STAND PIN	2
13	VP252		LYNCH PIN	3
14	11037		PARKING STAND	2
15	13257		CAT 1 & 2 LIFT PIN	2
16	LW3/4		LOCK WASHER, 3/4"	8
17	NS3/4-10		NUT- 3/4"-10	8
18	BS1/2-13.3		BOLT- 1/2"-13 X 3" GR. 5	4
19	LW1/2		LOCK WASHER- 1/2"	4
20	NS1/2-13		HEX NUT- 1/2"-13	4
21	SSS3/8-16.1/2		SOCKET SET SCREW, 3/8" X 16 X 1/2"	4
	16318		SAFETY WARNING DECAL SHEET (not shown, see page 2)	1
	15200		YELLOW REFLECTOR, 9" (not shown, see page 5)	1
	15361		RED-ORANGE DECAL, 9" (not shown, see page 5)	2
	15199		RED REFLECTOR, 9" (not shown, see page 5)	2

PARTS CATALOG

BCP3616

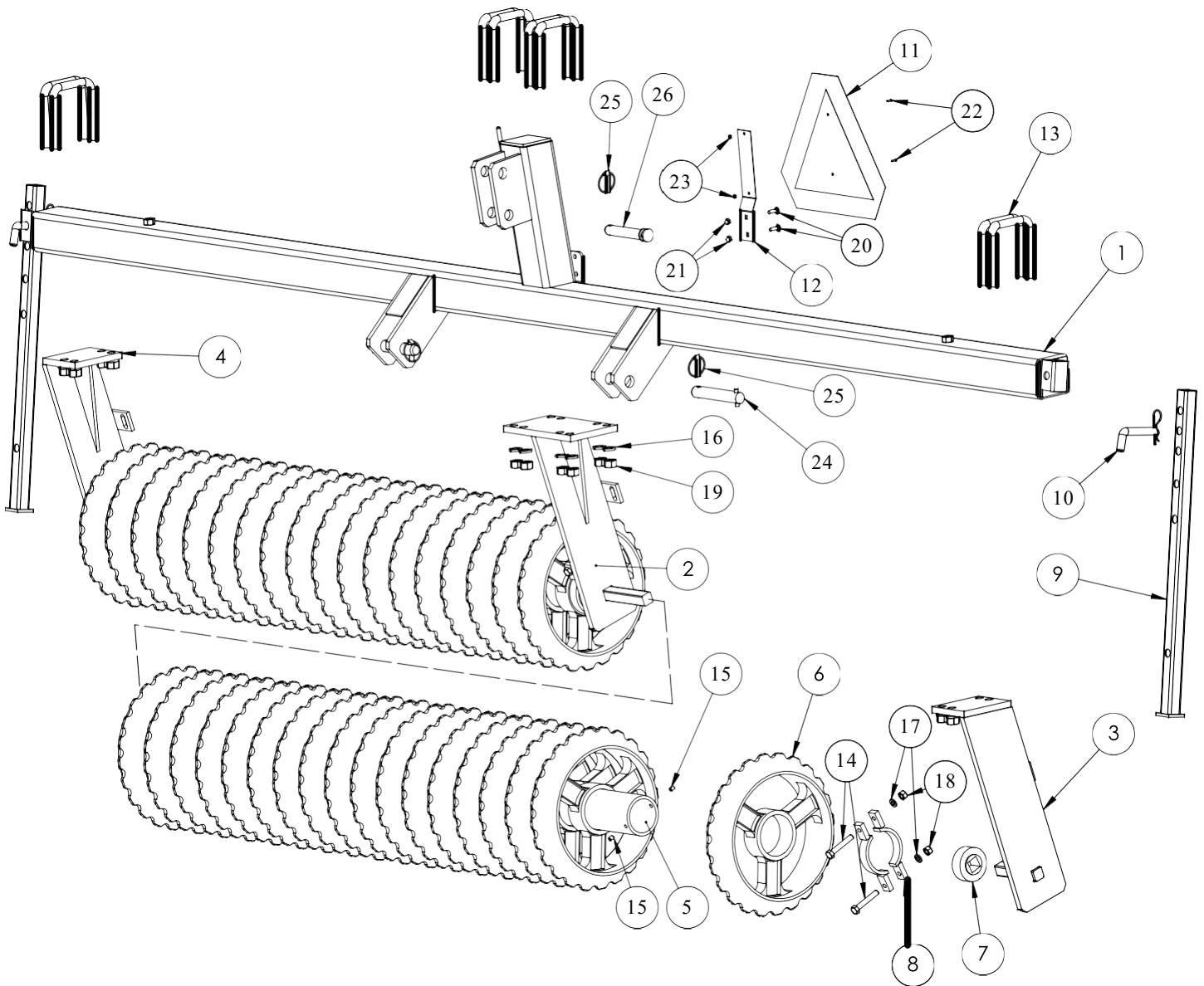


Figure 15.

PARTS CATALOG

BCP3616

Position	Part Number	...	Description	Qty.
1	15598		FRAME	1
2	15608		CULTIPACKER GANG HANGER CENTER	1
3	14907		CULTIPACKER GANG HANGER (LH)	1
4	14908		CULTIPACKER GANG HANGER (RH)	1
5	15894		GANG AXLE PIPE 75"	2
6	14971		CULTIPACKER WHEEL	36
7	T-602		BEARING, 1 1/18"	4
8	15896		AXLE CLAMP, HALF	8
9	11037		PARKING STAND	2
10	9690		PARKING STAND PIN	2
11	5SB101180		SMV SIGN	1
12	14997		SMV BRACKET	1
13	11971		4" x 4" U-BOLT	8
14	BS1/2-13.3		BOLT- 1/2" X 3" GR. 5	8
15	SSS3/8-16.1/2		SOCKET SET SCREW- 3/8" X 1/2"	8
16	LW3/4		LOCK WASHER- 3/4"	16
17	LW1/2		LOCK WASHER- 1/2"	8
18	NS1/2-13		NUT- 1/2"-13	8
19	NS3/4-10		NUT- 3/4"-10	16
20	CBS5/16-18.1		CARRIAGE BOLT- 5/16"-18 X 1" GR. 5	2
21	LNS5/16-18		SELF-LOCKING NUT- 5/16"-18	2
22	RHBS1/8-22.1/2		ROUND HEAD MACHINE SCREW, 1/8" X 1/2" GR. 5"	2
23	15213		HEX NUT, 1/8"	2
24	11167		CAT 2 HITCH PIN	2
25	VP252		LYNCH PIN	3
26	15208		CAT 2 TOP LINK PIN	1
	16318		SAFETY WARNING DECAL SHEET (see page 2)	1
	SB101598		YELLOW REFLECTOR, 9" (see page 5)	1
	15361		RED-ORANGE DECAL, 9" (see page 5)	2
	SB101379		RED REFLECTOR, 9" (see page 5)	2
	16513		NOTICE TRANSPORT SAFETY LABEL (see page 5)	1

Installing Optional Scraper Kit CPC-48, CP-72L

Follow these steps to install the Optional Scraper Kit.

1. Attach the Scraper Bar Mounts shown in Figure 16. (Ref. 1, Left Hand and Ref. 2, Right Hand) to the inside face of the roller hangers using 4 Hex Bolts, 5/8" x 2" (Ref. 7), Lock Washers, 5/8" (Ref. 8) and Hex Nuts, 5/8" (Ref. 9) provided with the scraper kit.
2. Mount the Scraper Bar (Ref. 3) to the Scraper Bar Mounts (Ref. 1, Left Hand and Ref. 2, Right Hand) using Carriage Bolt, 1/2" x 1 1/2" (Ref. 5) and Flange Lock Nut, 1/2" (Ref. 6) on each side.
3. Attach the Scraper Blades (Ref. 4) to the Scraper Bar (Ref. 3) using Carriage Bolt, 1/2" x 1 1/2" (Ref. 5) and Flange Lock Nut, 1/2" (Ref. 6).
4. Tighten each nut to the torque chart on page 33.

PARTS CATALOG

CPC-48, CP-72L

OPTIONAL SCRAPER KIT

CP-48L Scraper Kit Part #: SKCP-48L
 CPC-72 Scraper Kit Part #: SKCP-72L

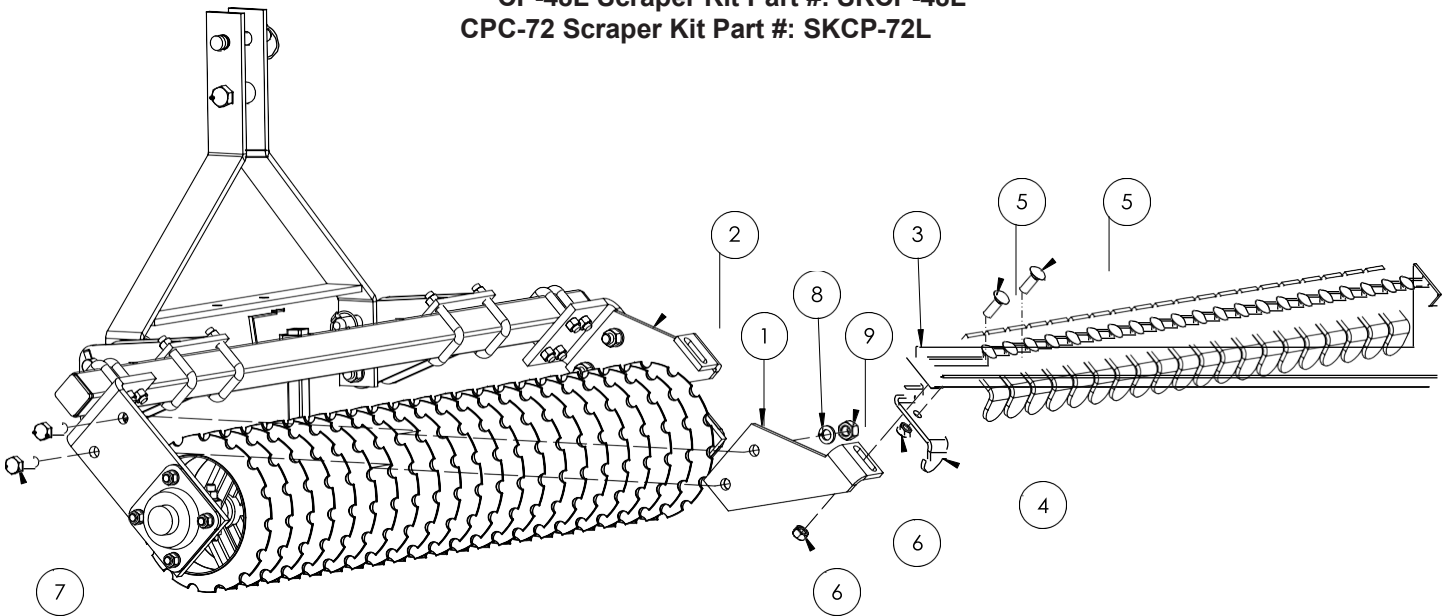


Figure 16.

Position	Part Number	...	Description	Qty.
1	16361		SCRAPER BAR MOUNT, LEFT	1
2	16362		SCRAPER BAR MOUNT RIGHT	1
3	16363		SCRAPER BAR, CP1148L	1
	11656		SCRAPER BAR, CP1172L	1
4	16364		SCRAPER	*MS
5	CBS1/2-13.11/2		CARRIAGE BOLT- 1/2" X 1 1/2"	*MS
6	FLNS1/2-13		FLANGE LOCK NUT- 1/2"-13	*MS
7	BS5/8-11.2		BOLT- 5/8" X 2"	4
8	LW5/8		LOCK WASHER, 5/8"	4
9	NS5/8-11		HEX NUT- 5/8"-11	4

*MS = Model Specific

PARTS CATALOG CPC-48, CPC-72 OPTIONAL TONGUE AND WHEEL KIT 16320

16493, Wheel Kit
Includes both Wheels,
Brackets, and Hardware.

16319, Tongue Kit
Includes Tongue, Clevis,
Ball Coupler
and Hardware.

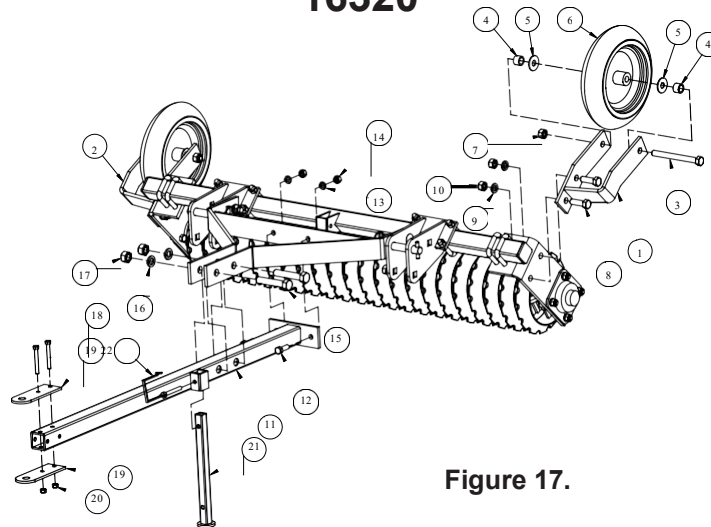


Figure 17.

Position	Part Number	...	Description	Qty.
1	16504		WHEEL MOUNT, LH	1
2	16503		WHEEL MOUNT, RH	1
3	BS5/8-11.61/2		BOLT- 5/8"-11 X 6 1/2"	2
4	14903		SPACER	4
5	FW5/8		FLAT WASHER- 5/8"	4
6	15156		TIRE AND RIM	2
7	LNS5/8-11		SELF-LOCKING NUT- 5/8"-11	2
8	BS5/8-11.2		BOLT- 5/8"-11 X 2"	4
9	LW5/8		LOCK WASHER- 5/8"	4
10	NS5/8-11		NUT- 5/8"-11	4
11	16494		TONGUE WELDMENT	1
12	BS1/2-13		BOLT- 1/2"-13 X 1 1/2"	2
13	LW1/2		LOCK WASHER- 1/2"	2
14	NS1/2-13		NUT- 1/2"-13	2
15	BS3/4-10.4		BOLT- 3/4"*10 X 4"	2
16	LW3/4		LOCK WASHER- 3/4"	2
17	NS3/4-10		NUT- 3/4"-10	2
18	BS3/8-16.3		HEX BOLT, 3/8" X 3"	2
19	16502		CLEVIS PLATE	2
20	FLNS3/8-16		FLANGE LOCK NUT- 3/8"*16	2
21	16346		PARKING STAND	1
22	16219		SQUARE LOCK PIN, 3/8"	1
NOT SHOWN	15008		BALL COUPLER, 1 7/8"	1
	16318		SAFETY WARNING DECAL SHEET (see page 2)	1

Installing Optional Tongue Kit CPC-48 & CP-72L

Follow these steps to install the Optional Tongue Kit.

1. Ensure the parking stand is in place and on level ground. Remove the Carriage Bolts, Lock Washers and Hex Nuts (Figure 18, Ref. 1). Rotate A-Frame to the horizontal position. Reinstall Carriage Bolts, Lock washers and Hex Nuts into upper hole (Ref. 2) on the hitch weldment. Tighten each nut to the torque chart on page 33.

2. Remove Category 1 top link pin and lynch pin (Ref. 3). Also remove 3/4" x 4" Hex Bolt, 3/4" Lock Washer, 3/4" Hex Nut and Category 1 and 2 Bushings (Ref. 4).

3. Insert the Tongue Weldment (Figure 17, Ref. 11) into the A-Frame. Ensure the safety decals are upside down on the tongue weldment. The safety decals will be right side up and legible while in transport position. Using two 3/4" x 4" Hex Bolts (Figure 17, Ref. 15), two 3/4" Lock washers (Figure 17, Ref. 16) and two 3/4" Hex Nuts (Figure 17, Ref. 17) into the large top link holes on the A-Frame. Also bolt the tongue base using two 1/2" x 1 1/2" Hex Bolts (Figure 17, Ref. 12), two 1/2" Lock washers (Figure 17, Ref. 13) and two 1/2" Hex Nuts (Figure 17, Ref. 14).

4. The Clevis will already be assembled.

5. To install the optional ball hitch receiver, remove clevis and position coupler over tongue and install the two clevis pins into ball coupler and tongue.

5. Tighten each nut to the torque chart on page 33.

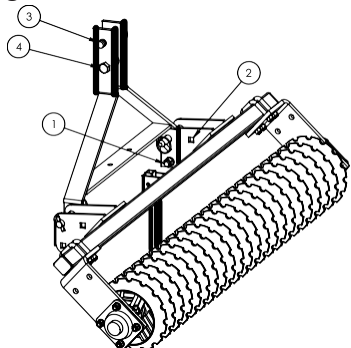


Figure 18.

Installing Optional Wheel Kit CPC-48 & CP-72L

Follow these steps to install the Optional Wheel Kit.

1. The right hand and left-hand wheel and bracket assembly will come already assembled.

2. Using two 5/8" x 2" Hex Bolts (Figure 17, Ref. 8), two 5/8" Lock washers (Ref. 9) and two 5/8" Hex Nuts (Ref. 10) install the wheel and bracket assembly onto the roller hanger using the two upper holes. (Note the angle of each bracket in Figure 17)

3. Repeat step 2 on the other side.

5. Tighten each nut to the torque chart on page 33.

CAUTION

Operating Instructions for Optional Tongue and Wheel Kit.

Follow these operating instructions to prevent serious injury.

This Optional Tongue and Wheel Kit is not designed for use on public roads.

1. Be aware of positive or negative tongue weight while hooking, unhooking, or rotating from transport to field position or vice versa. Failure to do so can cause serious injury.

2. Make sure no bystanders are in the area.

3. Rotate the tongue up until the unit is in the upright position. Adjust the parking stand so it will not contact the ground. The parking stand will need to be flipped when changing from operation to transport and vice versa. Keep a firm grip on the tongue during this process until the unit is resting in the vertical position. Failure to do so can

PARTS CATALOG

Operating Instructions for Optional Tongue and Wheel Kit. (Cont.)

cause serious injury.

4. Position yourself on the opposite side of the Cultipacker and rotate the tongue into the operating or transport position as shown in Figure 19.

5. Do not transport faster than 10 mph.

6. Avoid sharp turns with prime mover to be sure not to contact tires with the tongue.

7. Do not operate the Cultipacker in reverse to prevent damage to the unit.

8. To hitch Cultipacker to tractor, remove the parking stand and store in the operating position. Place clevis onto drawbar and insert drawbar pin.

Installing Optional Scraper Kit BCP1816, BCP2416, BCP3616

Follow these steps to install the Optional Scraper Kit.

1. Mount the Scraper Bar (Ref. 1) to the Scraper Bar Mount Lug welded to the Cultipacker Gang Hanger using Carriage Bolt, 1/2" x 1 1/2" (Ref. 3) and Flange Lock Nut, 1/2" (Ref. 4).

3. Attach the Scraper Blades (Ref. 2) to the Scraper Bar (Ref. 1) using Carriage Bolt, 1/2" x 1 1/2" (Ref. 3) and Flange Lock Nut, 1/2" (Ref. 4).

4. Tighten each nut to the torque chart on page 33.

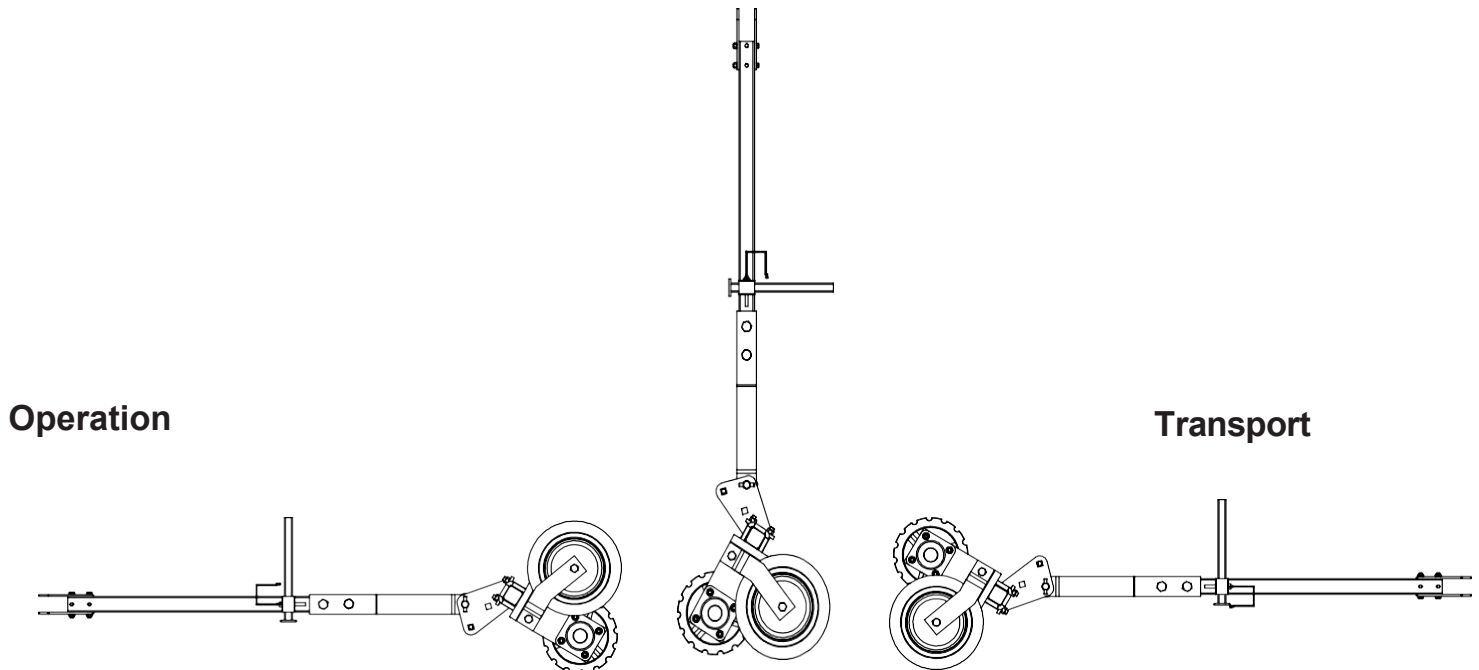


Figure 19.

PARTS CATALOG

BCP1816, BCP2416, BCP3616

OPTIONAL SCRAPER KIT

BCP1816 Scraper Kit Part #: SKBCP1816
 BCP2416 Scraper Kit Part #: SKBCP2416
 BCP3616 Scraper Kit Part #: SKBCP3616

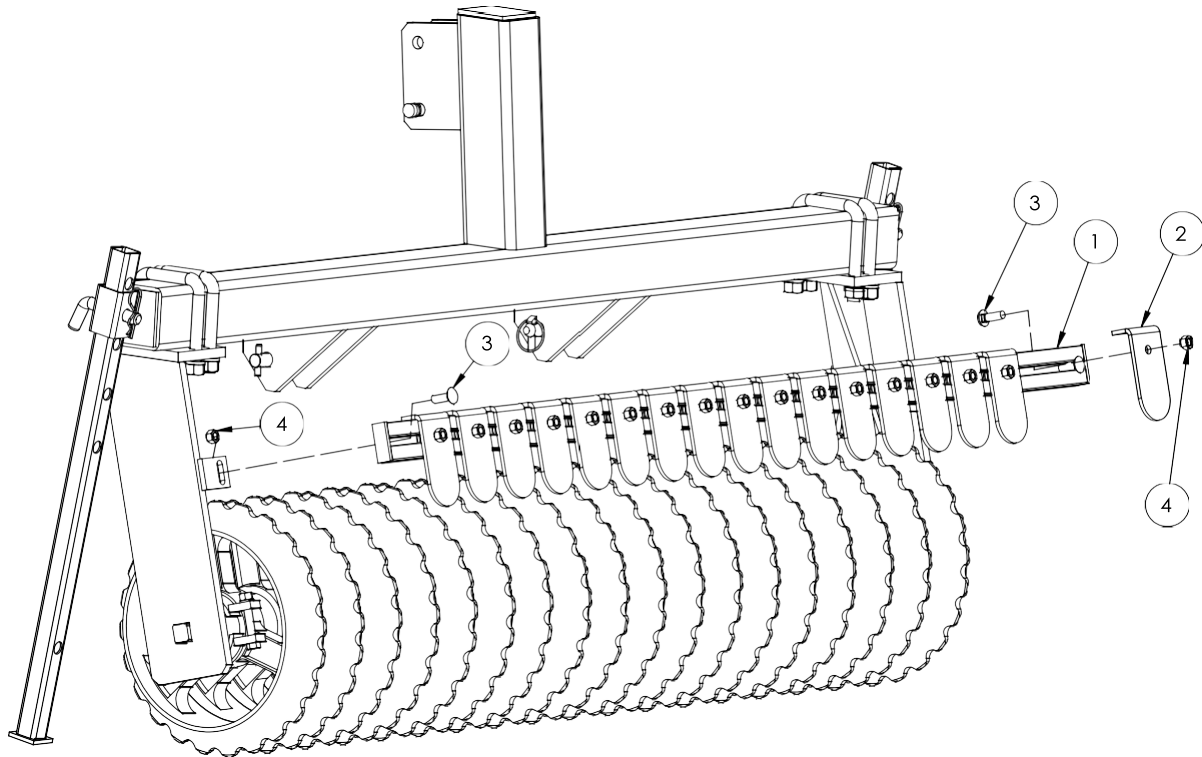


Figure 20.

Position	Part Number	...	Description	Qty.
1	11656		SCRAPER BAR, BCP1816, BCP3616	*MS
	T-2649		SCRAPER BAR, BCP2416	1
2	16373		SCRAPER	*MS
3	CBS1/2- 13.11/2		CARRIAGE BOLT- 1/2" X 1 1/2"	*MS
4	FLNS1/2-13		FLANGE LOCK NUT- 1/2"	*MS

*MS = Model Specific

Always comply with all state and local laws governing highway safety and lighting and marking requirements.

16323 comes with Figure 21 (Ref. 1-5).

1. Attach the light mount brackets (Ref. 3) to the welded hex nut on each side of the Cultipacker Frame.

2. Attach the light fixture to the light mount bracket using the 1/4" X 1 1/2" Gr. 2 hex bolts (Ref.1) and 1/4" nylon hex nuts (Ref. 4) and tighten.

3. Turn the light unit so that the red and orange lights are to the rear and the orange is on the outside. Make sure they are clearly visible from the rear of the unit and tighten the 5/8" nut.

4. Drill for the module using 3/16" drill bit and attach with two #12 X 1" self-tapping screws to the right side of the RH welded nut for mounting bracket (Ref. 3).

5. Run the wiring harness and attach to the

lamps, module, and pig tail.

6. Mark the P-Clamp locations with a marker. Drill holes using 3/16" drill bit. Secure the wiring harness to the frame using one #12 X 1" size self-tapping screw to hold each P-Clamps in place.

7. Use one size 1 1/8" P-Clamp (Ref. 6) to secure wiring bundle from RH lamp on the top face of the tube steel. Use four size 5/8" P-Clamps (Ref. 7) to secure the two cables on the RH side of the Cultipacker as shown below. Use four size 3/8" P-Clamps (Ref. 8) to secure the single cable on the LH side of the Cultipacker as shown below.

8. Make sure to not obscure the Safety reflectors.

9. Tighten each nut to the torque chart on page 33.

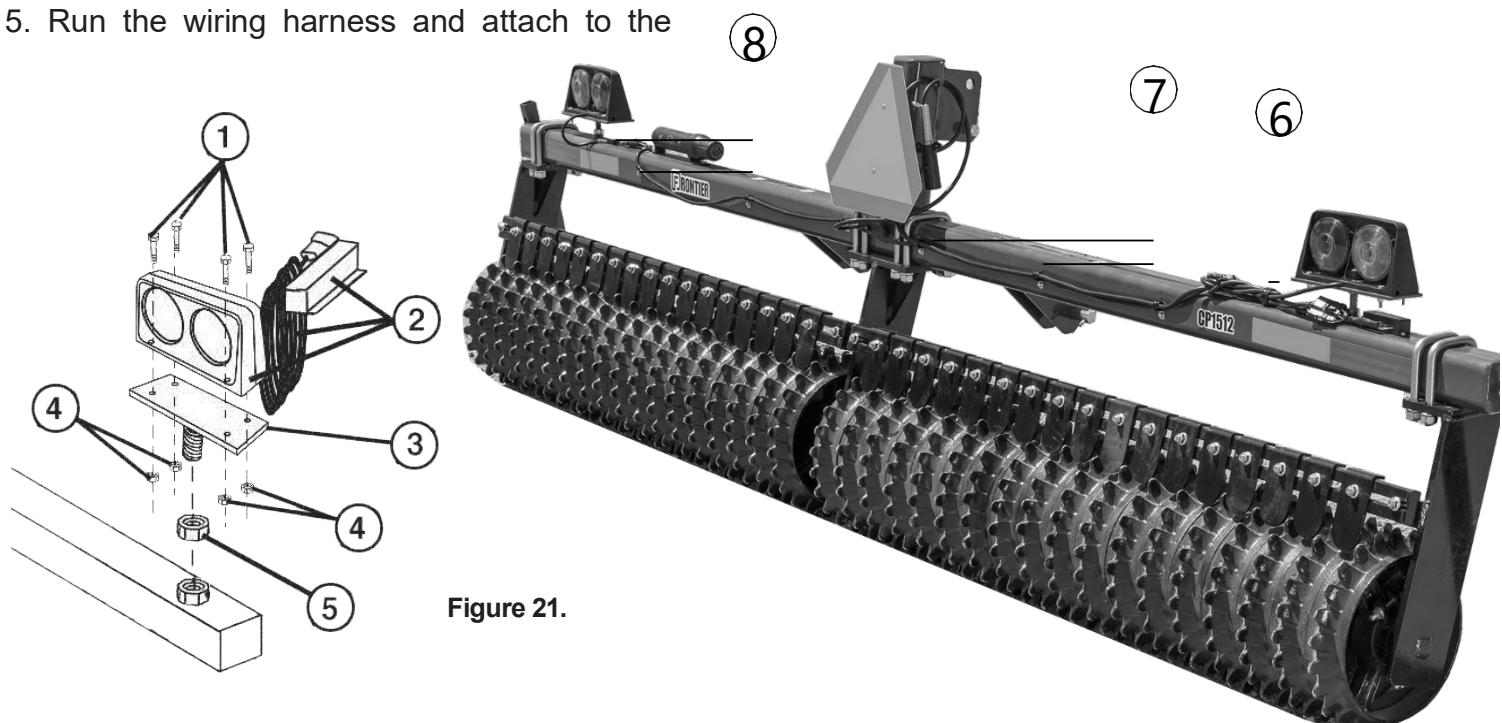


Figure 21.

PARTS CATALOG

BCP3616

OPTIONAL SAFETY LIGHT KIT

BCP3616 Safety Light Kit Part #: 16323

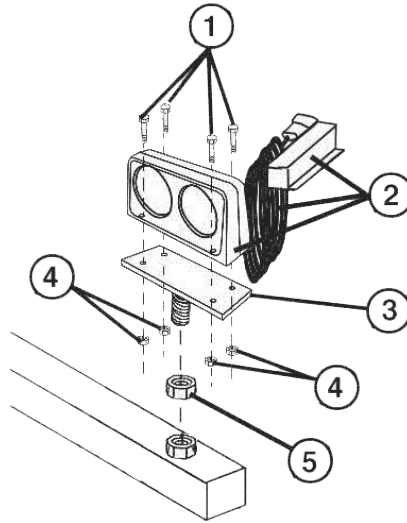
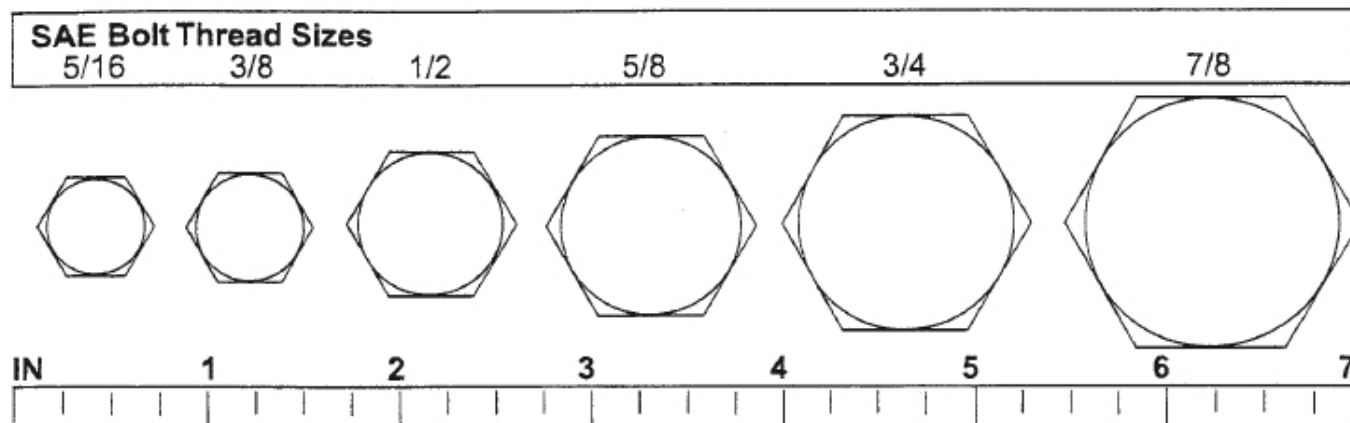


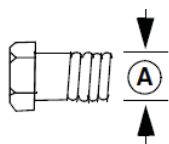
Figure 22.

Position	Part Number	...	Description	Qty.
1	BS1/4-20.11/2		HEX BOLT- 1/4"-20 x 1 1/2", GR. 2	8
2	16375		LIGHT KIT, INCLUDES 2-LAMPS, 1-WIRING HARNESS AND 1 MODULE	1
3	15347		LIGHT MOUNT BRACKET	2
4	LNS1/4-20		NYLON INSERT LOCK- NUT 1/4"-20	8
5	NS5/8-11		NUT- 5/8"-11	2
	16490		P-CLAMP, 3/8" (NOT SHOWN)	4
	16491		P-CLAMP, 5/8" (NOT SHOWN)	4
	16492		P-CLAMP, 1 1/8" (NOT SHOWN)	1
	BSST12.1		SELF TAPPING SCREW- #12 X 1" (NOT SHOWN)	11

NOTE: Chart shows bolt thread sizes and corresponding head (wrench) sizes for standard SAE and metric bolts.



SAE Torque Chart



**SAE SERIES
TORQUE
CHART**



SAE Grade 2
(No Dashes)

SAE Bolt Head
Identification



SAE Grade 5
(3 Radial Dashes)



SAE Grade 8
(6 Radial Dashes)

Ⓐ Diameter (Inches)	Wrench Size	MARKING ON HEAD					
		SAE 2		SAE 5		SAE 8	
		lbs-ft	N-m	lbs-ft	N-m	lbs-ft	N-m
1/4"	7/16"	6	8	10	13	14	18
5/16"	1/2"	12	17	19	26	27	37
3/8"	9/16"	23	31	35	47	49	67
7/16"	5/8"	36	48	55	75	78	106
1/2"	3/4"	55	75	85	115	120	163
9/16"	13/16"	78	106	121	164	171	232
5/8"	15/16"	110	149	170	230	240	325
3/4"	1-1/8"	192	261	297	403	420	569
7/8"	1-5/16"	306	416	474	642	669	907
1"	1-1/2"	467	634	722	979	1020	1383

33 Bolt Size and Bolt Torque Chart

NOTES

PARTS CATALOG



35 Optional Equipment